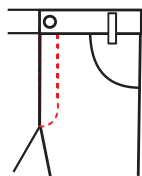


# PF-2200

## Sewing Unit for Folding and Attaching of Pockets Facings



The pocket facing machine is used for automatic folding and attaching of pocket facings onto the pocket bags with consistent quality and high productivity.



**AMF REECE**  
*Better Ideas. Better Made.*  
[www.promelectroavtomat.ru](http://www.promelectroavtomat.ru)

## Standard Features

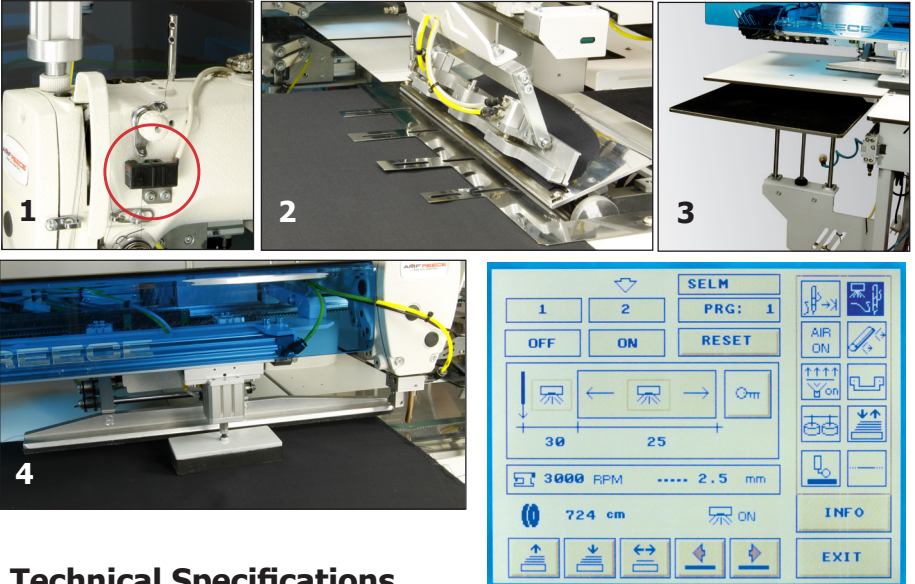
- The Stitching Length can be Adjusted from the Panel or Controlled Automatically by a Photocell **1**
- Folding Station for Facings up to 300 mm Long **2**
- Consistent Sewing Performance on Different Types of Fabrics
- The User-friendly Touch Screen Control Panel Makes it Easy to Change all Stitching Parameters Including the Stitch Length
- AC Servo Motor Combined with PLC Control System Ensures Reliable Operation of the Machine under Difficult Operating Conditions
- Backtacking
- Diagnostic System

## Standard Accessories

- Vacuum System for Connecting to Internal Source
- Stacker **3**
- Top Thread Monitor
- Laser Marking Light
- Fabric Mover **4**

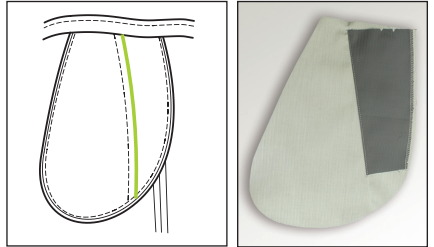
## Optional Accessories

- Extra Laser Light for Marking Labels
- Special Folding Station for up to 400 mm Length
- Vacuum Motor
- Label Feeder



## Technical Specifications

Sewing Head	Brother 7200 Lockstitch
Sewing Speed	max 4,800 spm
Maximum Seam Length	up to 420 mm
Folding Length	up to 300 mm (400 mm Optional)
Stitch Length	0,5 - 6 mm
Memory	40



**Production Data** 5,000 - 5,800 pieces per 8 hours



**Distributor**



**World**

**Headquarters** AMF Reece Inc., Czech Republic  
Tovární 837

796 25 Prostějov

Phone: +420 582 309 275

Fax: +420 582 360 608

E-mail: [marketing@amfreece.com](mailto:marketing@amfreece.com)

[www.promelectroavtomat.ru](http://www.promelectroavtomat.ru)

**Website: [www.amfreece.com](http://www.amfreece.com)**