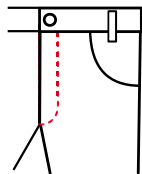


# SP-2600

## Sewing Unit for sewing side pockets



The side pocket sewer is used for top stitching side pockets with uniform seam quality and high productivity on trouser applications.

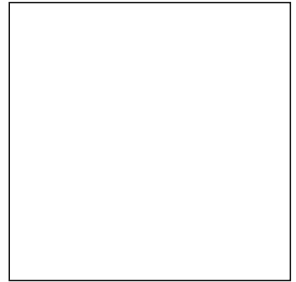
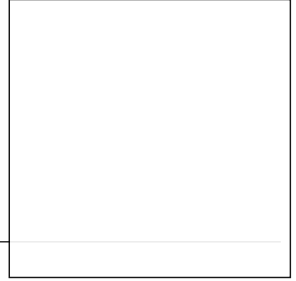
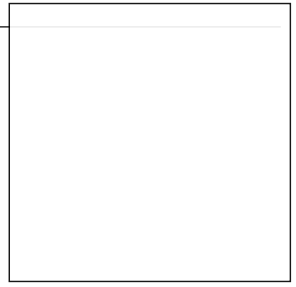


**AMF<sup>®</sup> REECE**

*Better Ideas Better Made*  
[www.promelectroavtomat.ru](http://www.promelectroavtomat.ru)

## Standard Features

- AC Servo Motor Combined with PLC Control System to Ensure Reliable Operation
- Touch Screen Display Panel for Setting all Parameters
- Automatic cutting and folding of fabric
- Sensor activated start and finish of sewing sequence
- Pneumatic thread trimming
- Backtacking at start and finish
- Needle thread monitor
- Laser marking light for fabric positioning
- Vacuum System for connecting to factory's central source or individual vacuum motor

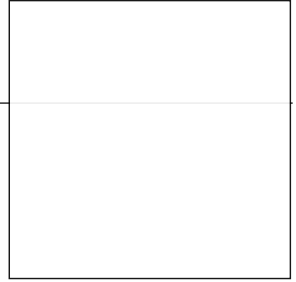


## Sewing Procedure

- The desired seam width is selected on the touch screen and also mechanically adjusted on the folding station from a knob.
- The fabric is placed on the table.
- The cutter cuts and folds the fabric.
- The clamp moves the fabric to exact sewing position and a blower unit removes the fabric after sewing.

## Optional Accessories

- Vacuum motor



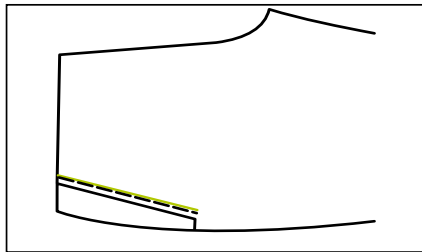
## Technical Specifications

Sewing Head	Brother S-7200 Lockstitch
Sewing Width	1 - 9mm
Maximum Sewing Length of Pocket	240 mm
Stitch Length	0,5 - 5 mm
Memory	49



**Production Data** 2,000 side pockets per 8 hours

## Applications



### Distributor

#### World

**Headquarters AMF Reece Inc., Czech Republic**  
Tovární 837  
796 25 Prostějov  
Phone: +420 582 309 275  
Fax: +420 582 360 608  
E-mail: [marketing@amfreece.com](mailto:marketing@amfreece.com)

[www.promelectroavtomat.ru](http://www.promelectroavtomat.ru)

**Website: [www.amfreece.com](http://www.amfreece.com)**