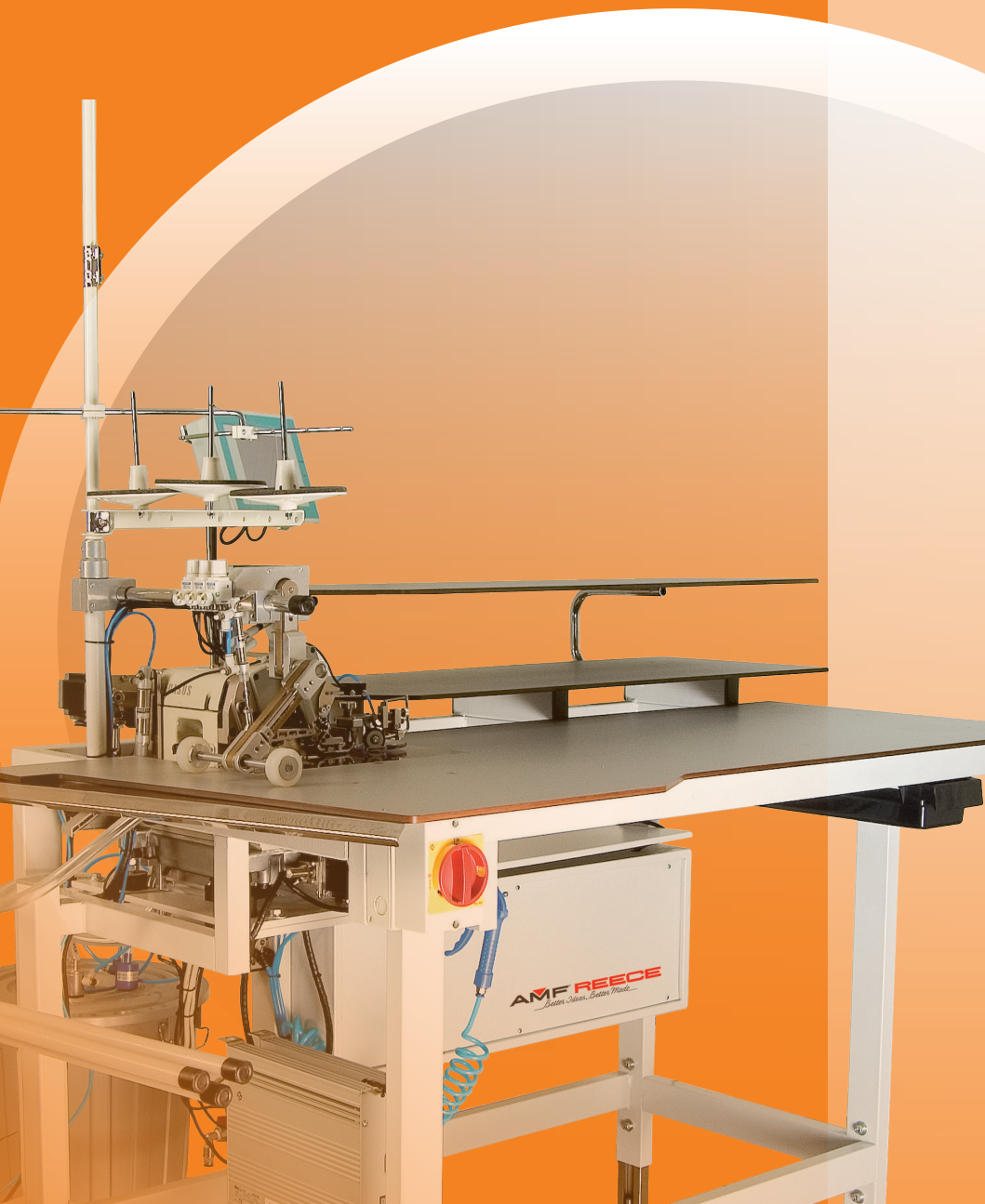
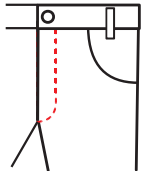


# TS-1600 TS-1700

## Serging Unit

The automatic serging units for trousers and skirts with or without knee lining.



**AMF<sup>®</sup> REECE**  
*Better Ideas, Better Made*

## TS-1600

---

The TS-1600 is a serging unit for trousers and skirts without knee lining. The preseams of hem, fly curve and seat curve can be serged manually while side seams and in-seams are sewn fully automatically with consistent and accurate seam width. The high speed of the unit allows fast and overlapping working method without manual interference of the operator. Touch screen graphical display provides ease of use and quick operator training.

### Standard Features

---

- PLC Control System with Touch Screen Display
- Height Adjustable Edge Guide for Different Material Thicknesses [1]
- Automatic Chain Cutting with Waste Removal [2]
- Thread Monitor [3]
- Cycle Sewing for Sequential Working of Front and Back Garment Panels
- Automatic Stacking

### Standard Accessories

---

- Fabric Holder [4]
- Push Type Stacker [5]

## TS-1700

---

In addition to the applications on the TS-1600, the TS-1700 can be used for trousers and skirts with knee lining.

### Standard Features

---

- Step Motor Controlled Differential Feeding for Optimum Fullness Insertion in Lining Area [6]
- All other standard features as TS-1600

### Standard Accessories

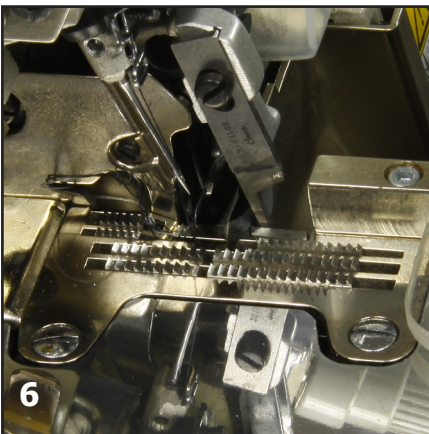
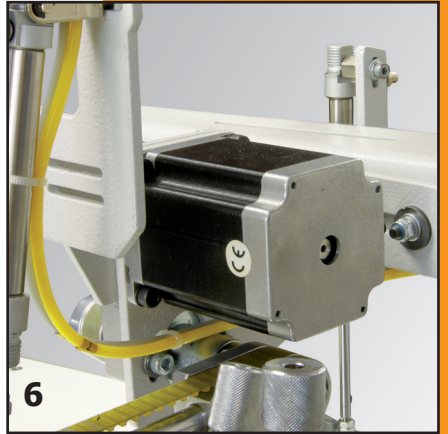
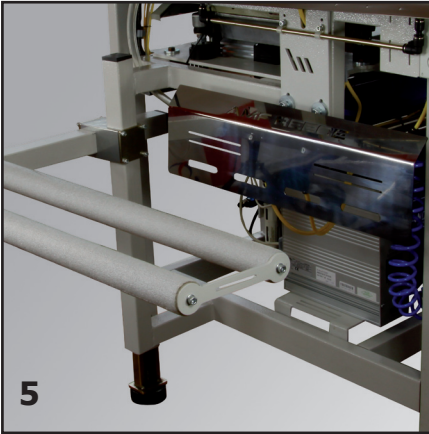
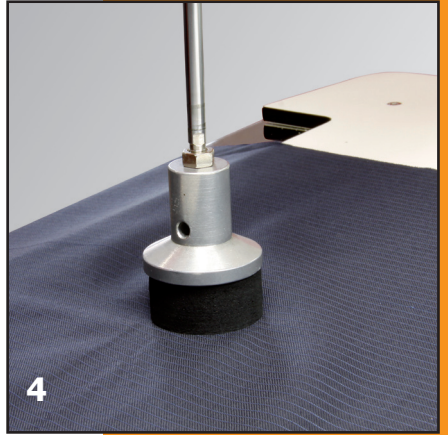
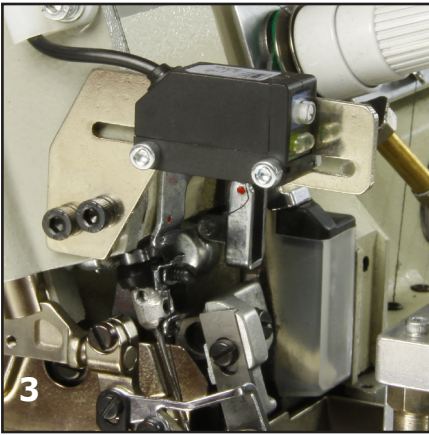
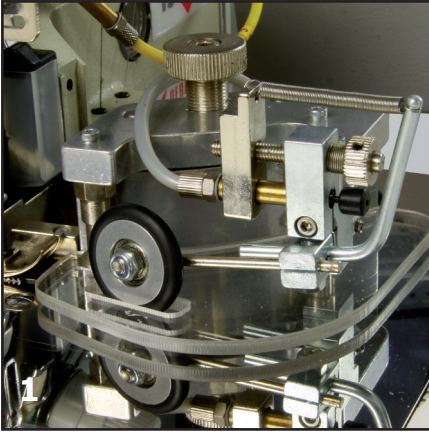
---

- Advanced Stacker
- Automatic Fullness Controlled by Step Motors
- Fabric Puller Controlled by Step Motor

### Sewing Procedure

---

- lay the front/ back panel either with or without the lining of the trousers on the work table
- the machine starts sewing automatically thanks to a photocell sensor once the panel is pushed towards the needle
- the panel is automatically guided and the overlock chain automatically trimmed and sucked to the waste bin
- the panel is automatically stacked



Sewing head

# Technical Specifications

Sewing Head	Overlock Pegasus 3-thread EX 5204 (TS-1600) Overlock with Top & Bottom Differential Feeding Pegasus EXT 5204 (TS-1700)
Sewing Speed	max 8,000 spm (TS-1600) max 8,500 spm (TS-1700)
Differential Bottom Feed Ratio	0 - 3.0 mm (TS-1600) 0.5 - 6.0 mm (TS-1700)
Top Feed	0-6.0 mm (TS-1700 only)
Stitch Length	1.0-5.0 mm
Seam Width	5 mm (6 mm optional)
Needle System	B27 80-120 Nm
Memory	40

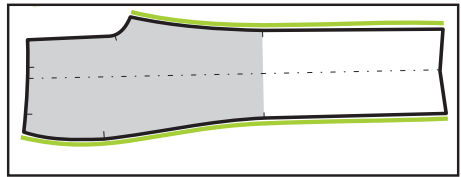
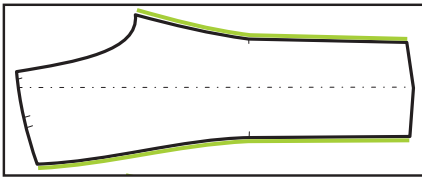
## Production Data per 8 hour day TS-1600

- 1100 front or back panels
- 1100 front or back panels + 2 preseams
- 950 front or back panels + 3 preseams

## Production Data per 8 hour day TS-1700

- 750 front panels with knee lining
- 1000 back panels
- 900 front and back panels + 2 preseams

# Applications



## Distributor

**World Headquarters** **AMF Reece Inc., Czech Republic**  
 Tovární 837  
 796 25 Prostějov  
 Phone: +420 582 309 275  
 Fax: +420 582 360 608  
 E-mail: [marketing@amfreece.com](mailto:marketing@amfreece.com)

**Website: [www.amfreece.com](http://www.amfreece.com)**