

EFKA

dc15xx

CONTROL

AB611A5021



Instruction Manual with list of parameters

- Putting into Service
- Settings
- Functional Description
- Connection Diagrams
- Timing Diagrams

Note
For initial operation after software updating or maintenance procedures, make sure to set parameter 467 for the specific motor to be used.
DC1500, F-467 = 1 / DC1550, F-467 = 2

No. 402442 English

Important Notes

The particulars used in various figures and tables, such as type, program number, speed, etc., serve as examples. They may differ from those in your display.

For current versions of the Instructions for Use and Lists of Parameters, necessary for operating EFKA drives in accordance with regulations, please refer to the EFKA web site www.efka.net, page "Downloads".

On our web site you will also find the following supplementary instructions for this control:

- ✘ General instructions for use and programming
- ✘ Use with USB Memory Stick
- ✘ Adapter cords

CONTENTS	Page
1 Range of Applications	5
1.1 Use in Accordance with Regulations	5
2 Scope of Supply	6
2.1 Special Accessories	6
2.2 Adapter Cords for Special Machines	7
3 Putting into Service	8
4 Setting and Putting into Service with the Aid of the Fast Installation Routine (SIR)	8
5 Setting the Basic Functions	9
5.1 Direction of Motor Rotation	9
5.2 Use of a HSM001 Hall Sensor Module or IPG... Pulse Encoder	9
5.3 Transmission Ratio	10
5.4 Selection of Functional Sequences (Thread Trimming Operations)	10
5.5 Functions of the Keys Inputs in1...in7	12
5.6 Positioning Speed	12
5.7 Maximum Speed Compatible with the Sewing Machine	12
5.8 Maximum Speed	12
5.9 Positions	13
5.9.1 Setting the Reference Position (Parameter 270 = 0 or 6)	13
5.9.2 Setting the Positions (Parameter 270 = 0 or 6)	13
5.10 Display of the Signal and Stop Positions	14
5.11 Positioning Shift	14
5.12 Braking Characteristics	14
5.13 Braking Power at Standstill	14
5.14 Starting Characteristics	15
5.15 Operating Hours Counter	15
5.15.1 Set and Reset Operating Hours Counter	16
5.15.2 Total Operating Hours Display	16
6 Functions	16
6.1 First Stitch after Power On	16
6.2 Softstart	16
6.2.1 Softstart speed	16
6.2.2 Softstart stitches	16
6.3 Sewing foot lifting	17
6.4 Reverse motor rotation	18
6.5 Unlocking the Chain (Mode 5/6/7)	18
6.6 Machine Run Blockage	19
6.7 Thread Trimming Operation	19
6.7.1 Thread Trimmer/Thread Wiper (Lockstitch Modes)	19
6.7.2 Trimming Speed	20
6.7.3 Chainstitch Thread Trimmer (Various Modes)	20
6.7.4 Chainstitch Machine Trimming Signal Times	20
6.8 Overlock Machine Functions (Mode 7)	20
6.8.1 Start and End Counts	21
6.9 Tape Cutter/Fast Scissors (Modes 6/7)	21
6.9.1 Tape Cutter/Fast Scissors in Mode 6	21
6.9.2 Tape Cutter/Fast Scissors in Mode 7	21
6.10 Manual Tape Cutter/Fast Scissors	22

6.11	Seam with Stitch Counting	22
6.11.1	Number of Stitches for a Seam with Stitch Counting	22
6.11.2	Stitch Counting Speed	22
6.11.3	Seam with Stitch Counting When Light Barrier Is On	23
6.12	Free Seam and Seam with Light Barrier	23
6.13	Light barrier	23
6.13.1	Speed after Light Barrier Sensing	23
6.13.2	General Light Barrier Functions	23
6.13.3	Reflection Light Barrier LSM002	24
6.13.4	Automatic Start Controlled by Light Barrier	24
6.13.5	Light barrier filter for knitted fabrics	24
6.13.6	Functional Variations of the Light Barrier Input	25
6.14	Switching Functions of Inputs in1...i13	25
6.15	Software Debouncing of All Inputs	26
6.16	Special pedal function Single stitch / Full stitch	26
6.17	Signal "Machine Running"	26
6.18	Signal Output Position 1	27
6.19	Actuator	27
6.19.1	Analog actuator	27
7	Signal Test	27
7.1	Inputs to the control	27
7.2	Outputs of control	28
8	Table of Machine Functions and Adapter Cords	29
9	Operating Elements and Socket Connectors	30
9.1	Positions of the Front Side	30
9.2	Positions of the Rear Side	30
9.3	Connection Diagrams	31
10	Timing Diagrams	35
11	List of Parameters	48
11.1	Preset Values Depending on Mode	48
11.2	Operator Level	50
11.3	Technician Level	52
11.4	Supplier Level	55
12	Error Displays	61

1 Range of Applications

The drive is suitable for lockstitch, chainstitch and overlock machines of various manufacturers.

The backtacking, stitch condensing, and chain suction functions are not supported.

With the help of adapter cords (adapter cords see Special Accessories), the drive can be used in replacement of the controls listed in the table below, as long as backtacking, stitch condensing, and chain suction are not used.

Machine manufacturer	Replacing	Machine	Model	Thread trimming mode	Adapter cord
Aisin	AB62AV	Lockstitch	AD3XX, AD158, 3310, EK1	0	1112815
Brother	AB62AV	Lockstitch	737-113, 737-913	0	1113420
Brother	AC62AV	Chainstitch	FD3 B257	5	1112822
Dürkopp Adler	DA62AV	Lockstitch	210, 270	0	1112845
Global		Chainstitch	CB2803-56	5	1112866
Juki	AB62AV	Lockstitch	5550-6	14	1112816
Juki	AB62AV	Lockstitch	5550-7, 8500-7, 8700-7	14	1113132
Kansai	AC62AV	Chainstitch	RX 9803	5	1113130
Pegasus	AC62AV	Chainstitch	W500/UT, W600/UT/MS, with/without stitch condensing	5	1112821
Pegasus	AB60C	Backlatch		8	1113234
Pfaff	PF62AV	Lockstitch	563, 953, 1050, 1180	0	1113491
Rimoldi		Chainstitch	F27	5	1113096
Singer	SN62AV	Lockstitch	212 UTT	2	1112824
Union Special	AC62AV	Chainstitch	34700 with stitch lock	5	1112844
Yamato	AC62AV	Chainstitch	VC series	5	1113345
Yamato		Chainstitch	VG series	5	1113345
Yamato	AB60C	Backlatch	ABT3	9	1112826
Yamato		Backlatch	ABT13, ABT17	9	1113205

1.1 Use in Accordance with Regulations

The drive is not an independently operating machine, but is designed to be incorporated into other machinery by specially trained personnel.

It must not be put into service until the machinery into which it is to be incorporated has been declared in conformity with the provisions of the EC Directive (Appendix II, paragraph B of the Directive 89/392/EEC and supplement 91/368/EEC).

The drive has been developed and manufactured in accordance with the relevant EC standards:

IEC/EN 60204-31 Electrical equipment of industrial machines:
 Particular requirements for industrial sewing machines, sewing units and sewing systems.

Operate the drive only in dry areas.



ATTENTION

When selecting the installation site and the layout of the connecting cable, the Safety Instructions must be followed with no exceptions.
 Particular attention should be paid to maintaining the proper distance from moving parts!

2 Scope of Supply

Standard Scope of Supply		
1	Direct current motor	DC1500 optional DC1550
1	Electronic control/Power supply unit	AB611A5021/N214
1	Actuator	EB401
1	Set of accessories (standard)	B156
	consisting of:	Plastic bag for B156 + documentation
and		
1	Set of accessories	Z66
	consisting of:	37-contact SubminD plug, pitman rod, potential equalization cord
Option 1		
1	Set of standard accessories	B159
	consisting of:	Undertable mounting kit, plastic bag for B159 + documentation
and		
1	Set of accessories	Z66
	consisting of:	37-contact SubminD plug, pitman rod, potential equalization cord

NOTE

If there is no metallical contact between drive (motor) and machine head, the potential equalization cord supplied with the unit is to be wired from the machine head to the terminal provided on the control box!

2.1 Special Accessories

The special accessories available ex works allow the augmentation and enhancement of functions, operating, connecting, and mounting options.

Since the range of available components is continually expanded, we kindly ask you to contact us in case of need.

Designation	Material No.
Reflection light barrier module LSM002	6100031
Hall sensor module HSM001	6100032
Pulse encoder IPG001	6100033
Adapter cord for the connection of light barrier module and/or Hall sensor module HSM001 and/or pulse encoder IPG001 and/or EFKANET	1113229
Extension cable approx. 1000 mm long for commutation transmitter DC15..	1113151
Extension cable approx. 1000 mm long for DC15.. line	1113150
Potential equalization cord 700 mm long, LIY 2.5 mm ² , gray, with spades on both sides	1100313
Fitting piece for position transmitter	0300019
Knee switch type KN19 (pushbutton) with cord of approx. 450 mm length with western connector (RJ11)	5870021
Knee switch type KN20 (pushbutton + toggle switch) with cord of approx. 1640 mm length with western connector (RJ11)	5870022
Mounting kit for DC1500 on PEGASUS model W600	1113125
Mounting kit for DC1500 on PEGASUS Ex/Ext	1113126
Mounting kit for DC15.. on PEGASUS model W1500N, W1600	1113647
Undertable mounting kit for DC15..	1113235
Undertable mounting kit (reinforced) for DC15..	1113427

Designation	Material No.
9-contact SubminD male connector	0504135
9-contact SubminD female connector	0504136
Half-shell housing for 9-contact SubminD	0101471
37-contact SubminD male connector, complete	1112900
Single pins for 37-contact SubminD with strand of 50 mm length	1112899

2.2 Adapter Cords for Special Machines

Machine / Type / Model	Material No.
AISIN high-speed seamer AD3XX, AD158, 3310 and overlock machine EK1	1112815
BROTHER model 737-113, 737-913	1113420
BROTHER lockstitch machine with 100 □ select resistor, models 7xxx, B84xx, 877B, B87xx, 878B (mode 31)	1113420
BROTHER chainstitch machine with 150 □ select resistor, models FD3-B257, 25xx, 26xx, 27xx (mode 32)	1112822
BROTHER models B721, B722, B724, B737, B748, B772, B774, B778, B842, B845, B872, B875 <i>Connection of the position sensor incorporated in the handwheel</i>	1113433
DÜRKOPP ADLER models 210 and 270	1112845
GLOBAL model CB2803-56	1112866
JUKI high-speed seamer with index -6	1112816
JUKI high-speed seamer with index -7	1113132
JUKI lockstitch machines <i>Connection of the position sensor incorporated in the handwheel</i>	1113157
KANSAI machine model RX 9803	1113130
PEGASUS models W500/UT, W600/UT/MS with or without stitch condensing	1112821
PEGASUS backlatch machine	1113234
PAFF models 563, 953, 1050, 1180 (without thread monitor)	1113491
SINGER models 211, 212U, 212UTT and 591	1112824
UNION SPECIAL lockstitch machine model 63900AMZ (in replacement of US80A)	1112823
UNION SPECIAL model 34700 with stitch lock	1112844
UNION SPECIAL models 34000 and 36200 (in replacement of US80A)	1112865
UNION SPECIAL models CS100 and FS100	1112905
YAMATO VC/VG series chainstitch machines + stitch lock	1113345
YAMATO backlatch machine ABT3	1112826
YAMATO backlatch machine ABT13, ABT17	1113205
MITSUBISHI lockstitch machines <i>Connection of the position sensor incorporated in the handwheel</i>	1113411

For interconnection diagrams of the adapter cords, please refer to our web site at www.efka.net/downloads.

3 Putting into Service

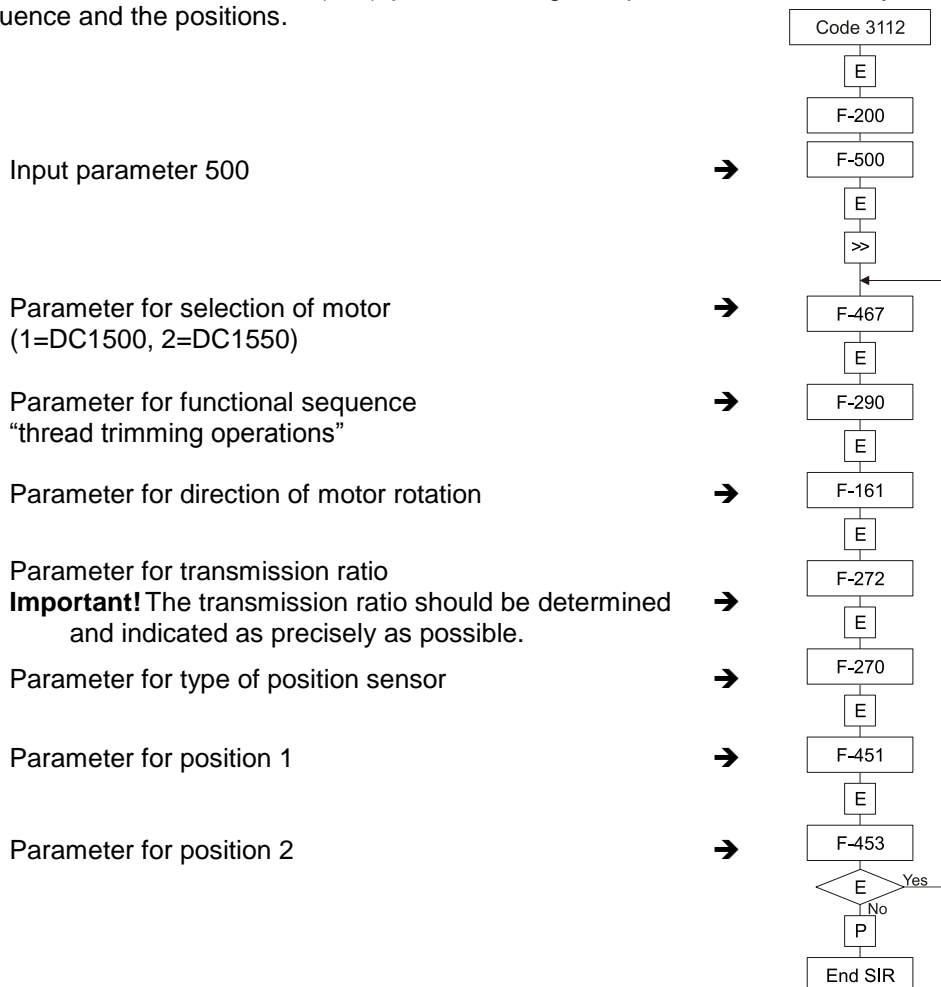
Before putting the control into service, the following must be ensured, checked and/or adjusted:

- Selection of the motor type DC1500 or DC1550 (parameter 467)
- The correct installation of the drive, position transmitter and accompanying devices, if necessary
- The correct selection of the trimming operation using parameter 290
- If necessary, the correct adjustment of the direction of motor rotation using parameter 161
- The correct selection of the functions of keys (inputs) using parameters 240...246
- The setting of the transmission ratio between motor shaft and machine shaft using parameter 272
- The setting of the type of position sensor using parameter 270
- If necessary, the setting of the positions using parameter 171 (possible with all settings of parameter 270)
- The correct positioning speed using parameter 110
- The correct maximum speed compatible with the sewing machine using parameter 111
- The setting of the remaining relevant parameters
- Begin sewing in order to save the set values

4 Setting and Putting into Service with the Aid of the Fast Installation Routine (SIR)

Functions	Parameter
Call-up of the Fast Installation Routine SIR	(Sir) 500

The Fast Installation Routine (SIR) passes through all parameters necessary for programming the functional sequence and the positions.



The values can be varied by pressing keys +/-.

KL2438a

With SIR you can do the most important settings for initial operation with menu prompting. For safety reasons, the menu must be executed point by point. This ensures correct setting of all important parameters. The setting of other parameters is not affected.

5 Setting the Basic Functions

5.1 Direction of Motor Rotation

Function	Parameter
Direction of motor rotation	(drE) 161

- 161 = 0 Clockwise motor rotation (look at the motor shaft)
- 161 = 1 Counterclockwise motor rotation

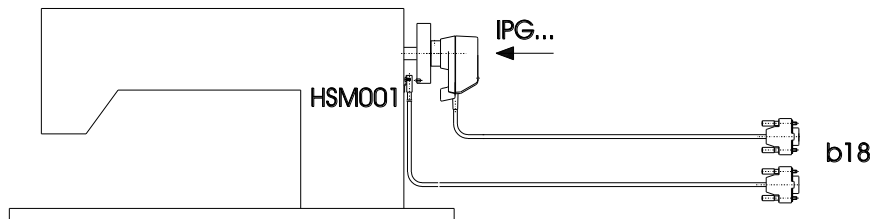


ATTENTION

If the motor is mounted differently, e. g. at a different angle or with gear, make sure that the value set using parameter 161 corresponds to the direction of rotation.

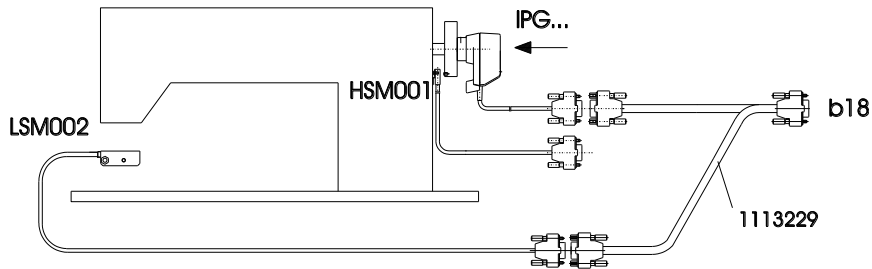
5.2 Use of a HSM001 Hall Sensor Module or IPG... Pulse Encoder

Representation and installation of a HSM001 Hall sensor module or IPG... pulse encoder



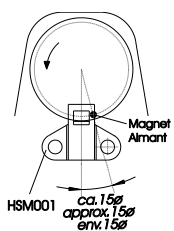
KL2521

Representation and installation of a HSM001 Hall sensor module or IPG... pulse encoder together with a LSM002 light barrier module by means of adapter cord no. 1113229



KL2522

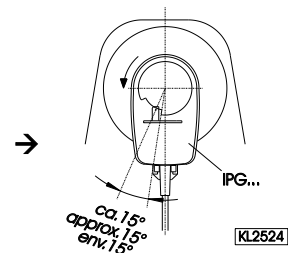
Operation with HSM001 Hall sensor module



KL2523

- ← - Get machine to the needle-up position.
- Position bore for magnet such that the magnet is located approx. 15° after the sensor in the sense of rotation.
- Get machine to the needle-up position.
- Turn disk in the pulse encoder such that the leading edge will be located approx. 15° after the sensor on the board in the sense of rotation.

Operation with IPG... pulse encoder



KL2524

5.3 Transmission Ratio

NOTE

The transmission ratio must always be input, because only motors with integrated incremental transmitter will be used. **The transmission ratio should be determined and set as precisely as possible!**

The transmission ratio between motor shaft and shaft of the sewing machine head must be input, so that the set speeds of parameters 110...117 correspond to the sewing speeds.

Function		Parameter
Transmission ratio between motor shaft and machine shaft	(trr)	272

The transmission ratio can be selected within a range of 020...9999 using parameter 272.

Example: With a motor pulley diameter of 40mm and a sewing machine head pulley diameter of 80mm the value 500 can be calculated using the formula below.
 If the value 2000 has been selected in parameter 272, it follows that the motor pulley is double the size of the sewing machine head pulley.

$$\text{Value of parameter 272} = \frac{\text{Motor pulley diameter}}{\text{Machine pulley diameter}} \times 1000$$

5.4 Selection of Functional Sequences (Thread Trimming Operations)

This drive is suitable for different lockstitch, chainstitch and overlock machines. The mode for the functional sequence required on the respective machine can be selected using parameter 290.

ATTENTION

Before switching the functional sequences, you must disconnect input and output plug-and-socket connections between control and machine. Please ensure that the functional sequence (mode) suitable for the respective machine is selected.

Settings with parameter 290 are possible only after the power is turned On.

You will find in List of Parameters chapter "Table of Adapter Cords" a summary of the modes that can be set and the corresponding machines and adapter cords, to include available output signals.

Mode 0	Lockstitch Machines
	Thread trimmer from leading to trailing edge of slot position 1
	Thread trimmer from trailing edge of slot position 1 to leading edge of slot position 2
	Thread trimmer from leading edge of slot position 1 to leading edge of slot position 2
	Thread wiper for a programmable time (t6)
	Sewing foot lifting (see chapter "Sewing Foot Lifting")
	Signal "machine running"
Mode 2	Lockstitch Machines (Singer 212 UTT)
	Thread trimmer for a programmable time (kt2) after intermediate stop in position 1
	Thread tension release from leading edge of slot position 1 to leading edge of slot position 2
	Sewing foot lifting (see chapter "Sewing Foot Lifting")
	Signal "machine running"
Mode 3	Lockstitch Machines with Thread Trimming System (e. g. Dürkopp Adler)
	Thread trimmer for programmable increments (iFA) after intermediate stop in position 1
	Thread tension release from trailing edge of slot position 2 after delay (FSE) during ON period (FSA)
	Thread wiper for a programmable time (t6)
	Sewing foot lifting (see chapter "Sewing Foot Lifting")
	Signal "machine running"
Mode 5	Chainstitch Machines In General
	Signal M1 after stop in position 2 after delay (kd1) during ON period (kt1)
	Signal M2 after stop in position 2 after delay (kd2) during ON period (kt2)
	Signal M3 after stop in position 2 after delay (kd3) during ON period (kt3)
	Signal M4 after stop in position 2 after delay (kd4) during ON period (kt4)

Time-delayed (kdF) sewing foot lifting after standstill in position 2 (see chapter "Sewing Foot Lifting")	
Signal "machine running"	
Mode 6	Chainstitch Machines with Tape Cutter or Fast Scissors
Signal M1 after stop in position 2 after delay (kd1) during ON period (kt1)	
Signal M2 after stop in position 2 after delay (kd2) during ON period (kt2)	
Fast scissors (M3) after delay (kd3) during ON period (kt3) alternating with M4	
Fast scissors (M4) after delay (kd4) during ON period (kt4) alternating with M3	
Sewing foot lifting (see chapter "Sewing Foot Lifting")	
Signal "machine running"	
Mode 7	Overlock Machines
Signal M1 after stop in position 2 after delay (kd1) during ON period (kt1)	
Signal M2 after stop in position 2 after delay (kd2) during ON period (kt2) or if parameter 232=1, as fast scissors alternating with M3 (parameter 282=0)	
Thread tension release after light barrier uncovered	
Tape cutter at the start of the seam after stitch count (c3) and at the seam end after stitch count (c4) and the delay time (kd3)	
Sewing foot lifting (see chapter "Sewing Foot Lifting")	
Signal "machine running"	
Mode 8	Backlatch Machines (Pegasus)
Signal M1 with pedal in positions -1 and -2	
Signal M2 with pedal in positions 1-12	
Inverted signal M3 with pedal in positions 1-12	
Sewing foot lifting (see chapter "Sewing Foot Lifting")	
Signal "machine running"	
Signal "machine at standstill"	
Operation at automatic speed	
Automatic speed has priority over machine run blockage	
Machine run blockage effective with open contact (input in1 / parameter 240=6) »Automatic speed has priority over machine run blockage«	
Key for operation at automatic speed (input in3 / parameter 242=10)	
Mode 9	Backlatch Machines (Yamato)
Signal M1 with pedal in positions -1 and -2	
Signal M2 with pedal in positions 1-12	
Inverted signal M3 with pedal in positions 1-12	
Sewing foot lifting (see chapter "Sewing Foot Lifting")	
Signal "machine running"	
Signal "machine at standstill"	
Key for operation at automatic speed (input in3 / parameter 242=10)	
Machine run blockage effective with open contact (input in1 / parameter 240=6)	
Machine run blockage has priority over automatic speed	
Mode 14	Lockstitch Machines (Juki 5550-6, 5550-7, 8500-7, 8700-7)
Thread trimmer (M1) from trailing edge of slot position 1 to leading edge of slot position 2	
Thread trimmer (M4) from leading edge of slot position 1 to leading edge of slot position 2	
Thread wiper (M3) for a programmable time (t6)	
Thread puller (M2) after stop in position 2 after delay (kd2) during ON period (kt2)	
Sewing foot lifting (see chapter "Sewing Foot Lifting")	
Signal (M5) "machine running"	
Positioning by Juki handwheel sensor on the control	

Further information see chapter "Timing Diagrams" for the various modes.

5.5 Functions of the Keys Inputs in1...in7

The function that is started when a button or switch connected to one of the inputs in1 to in7 is actuated can be selected using parameters 240 to 246.

The possible functions are listed in the section "Parameter list".

5.6 Positioning Speed

Function		Parameter
Positioning speed	(n1)	110

The positioning speed can be set using parameter 110 on the control within a range of 70...390 RPM.

5.7 Maximum Speed Compatible with the Sewing Machine

The maximum speed of the machine is determined by the selected pulley and by the following settings:

- Set the maximum speed using parameter 111 (n2)
- Set the maximum speed limitation to the specific level according to the application as described in chapter "Direct Input of Maximum Speed Limitation (DED)".

5.8 Maximum Speed

Function		Parameter
Maximum speed	(n2)	111

NOTE

See instruction manual of the sewing machine manufacturer for the maximum speed of the sewing machine.

NOTE

Select the pulley such that the motor runs at approx. 4000 RPM with max. number of stitches.

5.9 Positions

Function		Parameter
Selection according to position sensor	(PGm)	270
Setting the needle positions	(PGr)	171
Transmission ratio between motor shaft and machine shaft	(trr)	272

A sensor can be used as a position sensor, e.g. a light barrier or proximity switch with either NC or NO functionality.

It is connected to socket B18/7.

Parameter 270 is used to select the mode to be selected depending on the type and mounting of the sensor used (see section Parameter List under parameter 270 for a description and flow chart).

After configuration of parameter 270 to "1, 2, 3, or 4", parameter 171 must be used to set the angle for positions 1 and/or 2, incoming and outgoing.

Alternatively, the positions can be configured using the fast-installation routine.

The transmission ratio must already have been input using parameter 272.

5.9.1 Setting the Reference Position (Parameter 270 = 0 or 6)

The angular positions necessary on the machine e.g. "needle down position" or "thread lever up position" are stored in the control. A reference position is needed in order to establish a relationship between position transmitter information and actual mechanical position.

The reference position must be set:

- for initial operation
- after replacing the motor

Setting the reference position:

- Input code number and select parameter **170**.
- Press the **E** key → Display **Sr1**
- Press key **>>** → Display **P o** (character o rotating)
- Turn handwheel until rotating character **o** goes off on the display. → Display **P**
- By turning the handwheel, set the needle to the bottom dead center, or the needle point to the height of the needle plate in the direction of rotation of the motor shaft, while needle is moving downward. → Set machine reference point
- Press the **P** key once → Actual parameter number is displayed
- Press the **P** key twice → Exit programming at the technician level

5.9.2 Setting the Positions (Parameter 270 = 0 or 6)

Do these settings whenever the encoder incorporated in the motor is used (parameter 270 = 0), or a position transmitter mounted on the machine head (e.g. IPG pulse encoder or HSM Hall sensor) (parameter 270 = 6), whose preset values must be adapted.

- Nach Eingabe der Code-Nummer Parameter **171** wählen!
- Press the **E** key → **[o]** is displayed
- Press key **>>** → **P1E** is displayed; set "position 1 On" on the handwheel
- Press the **E** key → **P2E** is displayed; set "position 2 On" on the handwheel
- Press the **E** key → **P1A** is displayed; set "position 1 Off" on the handwheel
- Press the **E** key → **P2A** is displayed; set "position 2 Off" on the handwheel
- Press the **P** key twice → Exit programming at the technician level

5.10 Display of the Signal and Stop Positions

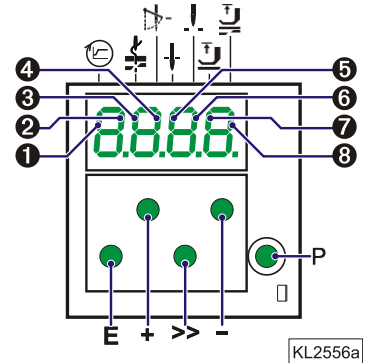
Function	Parameter
Display of positions 1 and 2	(Sr3) 172

The position settings can easily be checked by means of parameter 172.

- Select parameter 172
- The control panel display shows "Sr3"
- Turn handwheel according to the direction of motor rotation

Control display

- Segment **5** turns on corresponds to position 1
- Segment **5** turns off corresponds to position 1A
- Segment **6** turns on corresponds to position 2
- Segment **6** turns off corresponds to position 2A



5.11 Positioning Shift

Function	Parameter
Positioning shift	(PSv) 269

Determine by means of parameter 269 whether the drive is to stop exactly on the position (parameter 269 = 0) or some increments after the position.

5.12 Braking Characteristics

Function	Parameter
Braking effect when varying the preset value ≤ 4 stages	(br1) 207
Braking effect when varying the preset value ≥ 5 stages	(br2) 208

- Parameter 207 regulates the braking effect between speed stages
- Parameter 208 influences the braking effect for the stop

The following applies to all setting values: the higher the value, the stronger the braking reaction!

5.13 Braking Power at Standstill

Function	Parameter
Braking power at standstill	(brt) 153

This function prevents unintentional "wandering" of the needle at standstill. The effect can be checked by turning the handwheel.

- The braking power is effective at standstill
 - at stop in the seam
 - after the seam end
- The effect can be set
- The higher the set value, the stronger the braking power

5.14 Starting Characteristics

Function		Parameter
Starting edge	(ALF)	220

The drive acceleration dynamics can be adapted to the sewing machine characteristic (light/heavy).

- High setting value = high acceleration

With a high starting edge setting and, in addition, possibly high braking parameter values on a light machine, the characteristic may appear coarse. In this case, one should try to optimize the settings.

5.15 Operating Hours Counter

Function		Parameter
Acoustic signal	(AkS)	127
Service routine for total operating hours	(Sr6)	176
Service routine for operating hours before service	(Sr7)	177
Input of operating hours before service	(Sr)	217

The integrated operating hours counter records the time of motor operation. Downtimes are not recorded. Time recording accuracy is 1ms. There are two ways of operating hours counting.

1. Basic Operating Hours Counting:

217 = 0 Operational mode: Operating hours counting

2. Service Hours Monitoring:

217 = >0 Operational mode: Number of operating hours before the next service.

Input of operating hours before the next service.

This value is compared to the operating hours counter.

The hours are programmed in steps of 10, i. e. the lowest display of 001 corresponds to 10 hours (e. g. 055 = 550 hours).

When the set number of operating hours are reached, the message "C1" will show on the display after each trimming operation.

176 In this service routine, the total operating hours can be read out according to the procedure example described below for parameter 177.

177 Display of operating hours since the **last** service.

Display example of operating hours or hours since the last service and operating hours counter reset.

Control display:

- Select parameter 177.
- Press the **E** key → **Sr7**
- Press the **>>** key → **h t** (hours /thousands letter symbol)
- Press the **E** key → **000** (hours /thousands display)
- Press the **E** key → **h h** (hours / hundreds letter symbol)
- Press the **E** key → **000** (hours / hundreds display)
- Press the **E** key → **Min** (minutes letter symbol)
- Press the **E** key → **00** (minutes display)
- Press the **E** key → **SEc** (seconds letter symbol)
- Press the **E** key → **00** (seconds display)
- Press the **E** key → **MS** (milliseconds letter symbol)
- Press the **E** key → **000** (milliseconds display)
- Press the **E** key → **rES** see chapter "Set and Reset Operating Hours Counter"
- Press the **E** key → The process will be repeated from the hours display.
- Press the **P** key twice → z. B. **400** (sewing process can be started)

5.15.1 Set and Reset Operating Hours Counter

The number of hours has been reached (service necessary):

- Press the >> key once → The operating hours counter is set to "0" and restarted.

The number of hours has not yet been reached:

- Press the >> key 3 times → The operating hours counter is set to "0" and restarted.

A value in parameter 177 has been changed:

- After displaying **rES** ..., when the **E** key is pressed again, **SEt** will then be displayed.
- If the changed value is to be saved, press the >> key 3 times.

5.15.2 Total Operating Hours Display

In this service routine enabled using parameter 176, the total number of operating hours is displayed.

The sequence of displayed values is as with parameter 177.

The values can only be displayed, not varied. Therefore, letter symbols "rES" for "reset" and "SEt" for "set" will not appear.

6 Functions

6.1 First Stitch after Power On

Function	Parameter
1 stitch at positioning speed after power On	(Sn1) 231

If parameter **231** is on, the first stitch after power on will be performed at positioning speed for the protection of the sewing machine. This is independent of the pedal position and the softstart function.

6.2 Softstart

Function	Parameter
Softstart On/Off	(SSt) 134

Functions:

- after power on
- at the beginning of a new seam
- speed pedal controlled and limited to (n6)
- lower speed of a parallel function prevailing (e. g. stitch counting)
- stitch counting synchronized to position 1
- suspension with pedal in position 0 (neutral)
- interruption by full heelback (position -2)

6.2.1 Softstart speed

Function	Parameter
Softstart speed	(n6) 115

6.2.2 Softstart stitches

Function	Parameter
Number of softstart stitches	(SSc) 100

6.3 Sewing foot lifting

Function	Control
Automatic in the seam	LED-segment 7 On
Automatic after thread trimming	LED-segment 8 On
Key – (S4)	

Function	Parameter
Automatic sewing foot with pedal forward at the seam end if light barrier or stitch counting is On	(AFL) 023
Coupled thread tension release and sewing foot lifting. The function can be activated only with a thread trimmer that depends on the angle.	(FSP) 024
Switch-on delay with pedal in position -1	(t2) 201
Start delay after disabling the sewing foot lifting signal	(t3) 202
Time of full power of sewing foot lifting	(t4) 203
Duty ratio (ED) with pulsing	(t5) 204
Delay after thread wiping until sewing foot lifting	(t7) 206
Delay after thread trimming without thread wiper until sewing foot lifting	(tFL) 211
Upper limit ON period of sewing foot lifting 1...100	(EF-) 254

Sewing foot is lifted:

- in the seam
 - by heelback (position -1)
 - or automatically (using the **S4** key on the control, segment 7 lights up)
- after thread trimming
 - by pressing a key depending on the pre-selection of parameters **240...246**
 - by heelback (position -1 or -2)
 - or automatically (using the **S4** key on the control, segment 8 lights up)
 - by pressing a key depending on the pre-selection of parameters **240...246**
 - automatically by light barrier when pedal forwards, according to the setting of parameter **023**
 - automatically by stitch counting when pedal forwards, according to the setting of parameter **023**
 - Switch-on delay after thread wiper (t7)
 - Switch-on delay without thread wiper (tFL)

It is possible to prevent unintentional foot lifting before thread trimming when changing from pedal position 0 (neutral) to position -2 by setting a switch-on delay (t2) using parameter **201**.

Holding power of the lifted foot:

The sewing foot is lifted by full power. Then the system switches automatically to partial power in order to reduce the load for the control and the connected solenoid.
Set the duration of full power using parameter **203** and the partial holding power using parameter **204**.



ATTENTION

If the holding power is set too high, the solenoid and the control may be permanently damaged. Please observe the permissible duty ratio (ED) of the solenoid and set the appropriate value according to the table below.

Value	Duty ratio (ED)	Effect
1	1 %	low holding power
100	100 %	high holding power (full power)

Sewing foot lowers:

- Press pedal to position 0 (neutral)
- Press pedal to position ½ (slightly forward)
- Release key for manual sewing foot lifting

Upon pressing the pedal forward from lifted sewing foot, the start delay (t3) that can be set using parameter **202** becomes effective.

6.4 Reverse motor rotation

Function		Parameter
Positioning speed	(n1)	110
Reversing angle	(ird)	180
Switch-on delay of reverse motor rotation	(drd)	181
Reverse motor rotation On/Off	(Frd)	182

The function "reverse motor rotation" is performed after trimming. When the stop position is reached, the drive stops for the duration of the switch-on delay of reverse motor rotation. Then it runs in reverse direction at positioning speed according to the set degrees.

6.5 Unlocking the Chain (Mode 5/6/7)

Function		Parameter
Number of run-out stitches upon unlocking the chain	(c6)	184
Function "unlock the chain" in modes 5, 6 and 7	(mEk)	190

Upon unlocking the chain at the seam end, the functions **thread trimming** and **tape cutter/fast scissors** are automatically suppressed. If, however, parameter **190 = 3**, the function **tape cutter/fast scissors** is possible. After pressing the key "unlocking the chain" and with pedal in position 0 (neutral), the drive always stops in position 1.

Settings necessary for the operation "unlocking the chain":

- Set "unlock the chain" using parameter **190 = 1 / 2 / 3 / 4** (**190 = 0** "unlock the chain" off)
- Set **switch-on delay** using parameter **181** and **reversing angle** using parameter **180**
- Determine the **function of the key "unlock the chain"** using one of the parameters **240...246**
- If parameter **290** is set at "7", a switch at the input in1...in7 must be closed and programmed to "18".

190 = 0 **Unlocking the chain Off**

190 = 1 **Sequence with pedal in position -2 from machine run or from position 2:**

- Press key "unlock the chain"
- Run at positioning speed to position 1
- Sequence of reversing angle at positioning speed after a switch-on delay that can be set

190 = 1 **Sequence with pedal in position -2 from standstill in position 1:**

- Press key "unlock the chain"
- Sequence of reversing angle at positioning speed after a switch-on delay that can be set

190 = 2 **Automatic sequence with light barrier at the seam end without tape cutting / pedal in position -2 according to the setting of parameter 019:**

- Press key "unlock the chain"
- Run to position 1 after light barrier sensing
- Sequence of reversing angle at positioning speed after a switch-on delay that can be set

190 = 3 **Automatic sequence with light barrier at the seam end with tape cutting and run-out stitches (only possible in mode 7 and if parameter 018 = 0):**

- Press key "unlock the chain"
- After light barrier sensing, execution of compensating stitches and end counting until tape cutting
- Run-out stitches until unlocking the chain can be set using parameter 184
- Sequence of reversing angle at positioning speed after a switch-on delay that can be set

- 190 = 4 Sequence with pedal in position –2 / no unlocking of the chain if seam end with light barrier, cutting and run-out stitches is set:**
- Press the pedal to position –2
 - Run at positioning speed to position 1
 - Sequence of reversing angle at positioning speed after a switch-on delay that can be set
 - No unlocking of the chain at the seam end with light barrier
 - Reverse motor rotation is suppressed when the drive stops. The signals “blow fabric onto stack”, M2 and “sewing foot lift” will be issued.

6.6 Machine Run Blockage

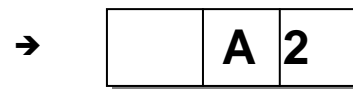


CAUTION

This is not a safety function. The line voltage must still be switched off during maintenance and repair work.

The function “machine run blockage” is enabled by connecting a switch to socket ST2, depending on the pre-selection of parameters **240...249**

Display after enabling machine run blockage:
Control display



Machine run blockage in the free seam, seam with stitch counting and light barrier seam:

The seam is suspended by opening and/or closing the switch.

- Stop in the basic position
- Needle up is not possible
- Sewing foot lift is possible

New start after machine run blockage

Function	Parameter
New start after machine run blockage (Pdo)	234

Parameter 234 determines how a new start is possible after closing and/or opening the switch.

- 234 = 0** New start after disabling machine run blockage without influence by the pedal. This setting is applicable, for example, to automats.
- 234 = 1** New start after disabling machine run blockage only if the pedal is in position 0 (neutral).

6.7 Thread Trimming Operation

Function	Parameter
Thread trimmer On/Off (FA)	013
Thread wiper On/Off (FW)	014

6.7.1 Thread Trimmer/Thread Wiper (Lockstitch Modes)

Function	Parameter
Thread wiper time (t6)	205
Thread wiper switch-on delay (dFw)	209
Holding power output M1 of the thread trimmer backward (t11)	213
Thread trimmer activation angle (iFA)	250
Thread tension release switch-off delay (FSA)	251
Thread tension release switch-on delay (FSE)	252
Stop time for thread trimmer (tFA)	253
Upper limit ON period of thread trimmer backward (EV-)	255
Switch-on delay angle of the thread trimmer (FAE)	259

Thread trimming in the lockstitch modes is performed at trimming speed.

When the thread trimmer is off, the drive stops in position 2 at the seam end; it stops in position 1 at the end of programmed seams.

The thread wiper ON period can be set depending on the selected trimming mode (see chapter "Timing Diagrams" in the List of Parameters). The delay time (t7) (parameter **206**) prevents sewing foot lifting before the thread wiper is in its initial position.

If the thread wiper is not connected, there will be a delay time (tFL) after thread trimming until sewing foot lifting.

6.7.2 Trimming Speed

Function	Parameter
Trimming speed	(n7) 116

6.7.3 Chainstitch Thread Trimmer (Various Modes)

Thread trimming in the chainstitch modes is performed at machine standstill in position 2.

The signal sequence of M1...M4 and sewing foot lifting at the seam end can be set as desired using parameters **280...288** (parallel or sequential).

When the thread trimmer is off, the drive stops in position 2 at the seam end.

6.7.4 Chainstitch Machine Trimming Signal Times

Signal delay times and ON periods can be set with the help of the following parameters.

See chapter 8 »Setting the Basic Functions, Selection of Functional Sequences« in this manual for further information on chain stitch seam end variants and chapter »Timing Diagrams« in the List of Parameters.

Function	Parameter
Delay time output M1	(kd1) 280
ON period output M1	(kt1) 281
Delay time output M2	(kd2) 282
ON period output M2	(kt2) 283
Delay time output M3	(kd3) 284
ON period output M3	(kt3) 285
Delay time output M4	(kd4) 286
ON period output M4	(kt4) 287
Delay time until sewing foot On	(kdF) 288

6.8 Overlock Machine Functions (Mode 7)

Function	Parameter
Stop when tape cutting at the seam end On/Off	(SAb) 017
Sequence overlock mode with or without stop	(UoS) 018
Stitches until thread tension release Off after light barrier covered at the start of the seam	(SFS) 157
Braking curve in overlock mode On/Off	(bdO) 235
Start count cancellation and seam end initiation by light barrier uncovered On/Off	(Abc) 267

There are various setting possibilities with the following parameters in the overlock mode (mode 7).

018 = 0 Sequence with stop.

018 = 1 Sequence without automatic stop at the seam end. When the command "run" is given, the drive runs at the pre-selected speed. The program switches to the next start of a seam without issuing signals M1/M2, when the pedal is in pos. 0 (neutral) or the light barrier is covered.

018 = 2 Sequence as with setting 1. But signals M1/M2 will be issued when the pedal is in pos. 0 (neutral), and the program switches to the next start of a seam.

018 = 3 Sequence as with setting 1. But signals M1/M2 will be issued when the pedal is in pos. -2, and the program switches to the next start of a seam. Intermediate stop and sewing foot lifting with pedal in pos. -1 is possible.

- 018 = 4** If the light barrier is covered during the end count for chain suction, the program switches immediately to the next start of a seam. If the end count has been completed and the light barrier remains uncovered, the drive stops immediately.
- 018 = 5** Tape cutting at the start of the seam with stop.
- 267 = 0** Start count cancellation by light barrier uncovered impossible.
- 267 = 1** Start count cancellation by light barrier uncovered.
Tape cutting at the start of the seam is cancelled whenever the light barrier senses "uncovered", and the seam end will be initiated.

6.8.1 Start and End Counts

Function		Parameter
Count (c3) tape cutter at the start of the seam	(c3)	002
End count (c4) for tape cutter at the seam end	(c4)	003

6.9 Tape Cutter/Fast Scissors (Modes 6/7)

6.9.1 Tape Cutter/Fast Scissors in Mode 6

The signal **tape cutter/fast scissors** is issued only at the seam end. Furthermore, the manual tape cutter/fast scissors function can be set. See also chapter "**Manual Tape Cutter/Fast Scissors**".

Function		Parameter
Tape cutter at the seam end On/Off		014

Output and Times for Tape Cutter

Function		Parameter
Delay time for output M3 (ST2/27) tape cutter AH	(kd3)	284
ON period for output M3 (ST2/27) tape cutter AH	(kt3)	285

- Parameter **232** must be set at "**0**" (tape cutter function).
- The delay time for the tape cutter is usually set at "**0**".

Output and Times for Fast Scissors

Function		Parameter
Delay time for output M3 (ST2/27) fast scissors AH1	(kd3)	284
ON period for output M3 (ST2/27) fast scissors AH1	(kt3)	285
Delay time for output M4 (ST2/36) fast scissors AH2	(kd4)	286
ON period for output M4 (ST2/36) fast scissors AH2	(kt4)	287

- Parameter **232** must be set at "**1**" (fast scissors function).
- The delay times for "fast scissors" are usually set at "**0**".

6.9.2 Tape Cutter/Fast Scissors in Mode 7

The signal **tape cutter/fast scissors** can be set separately for start and end counting. See also chapter "**Manual Tape Cutter/Fast Scissors**".

Function		Control
Tape cutter/Fast scissors at the start of the seam On	LED-segment 3 On	Key + (S3)
Tape cutter/Fast scissors at the seam end On	LED-segment 4 On	
Tape cutter/Fast scissors at the start and at the end of the seam On	LED-segment 3 and 4 On	
Tape cutter/Fast scissors at the start and at the end of the seam Off	LED-segment 3 and 4 Off	

Output and Times for Tape Cutter

Function		Parameter
Delay time for output M3 (ST2/27) tape cutter AH	(kd3)	284
ON period for output M3 (ST2/27) tape cutter AH	(kt3)	285

- Parameter **232** must be set at "0" (tape cutter function).
- The delay time for the tape cutter is usually set at "0".

Output and Times for Fast Scissors

Function		Parameter
Delay time for output M3 (ST2/27) fast scissors AH1	(kd3)	284
ON period for output M3 (ST2/27) fast scissors AH1	(kt3)	285
Delay time for output M4 (ST2/36) fast scissors AH2	(kd4)	286
ON period for output M4 (ST2/36) fast scissors AH2	(kt4)	287

- Parameter **232** must be set at "1" (fast scissors function).
- The delay times for "fast scissors" are usually set at "0".

6.10 Manual Tape Cutter/Fast Scissors

Upon pressing an external key depending on the pre-selection of parameters **240...249**, the **tape cutter** or **fast scissors** can be enabled anywhere in the seam or at standstill.

See also chapter "Connection Diagram" in the List of Parameters!

6.11 Seam with Stitch Counting

Function		Parameter
Stitch counting On/Off	(n7)	015

6.11.1 Number of Stitches for a Seam with Stitch Counting

Function		Parameter
Number of stitches for the seam with stitch counting	(Stc)	007

The number of stitches for stitch counting can be set directly on the control.

6.11.2 Stitch Counting Speed

Function		Parameter
Positioning speed	(n1)	110
Stitch Counting Speed	(n12)	118
Speed mode for a seam with stitch counting	(SGn)	141

Speed control for stitch counting can be selected using parameter **141**.

- 141 = 0** Execution at pedal controlled speed
- 141 = 1** Execution at fixed speed n12, when pressing the pedal forward (position >1)
- 141 = 2** Execution at limited speed n12, when pressing the pedal forward (position >1)
- 141 = 3** Automatic execution at fixed speed after having pressed the pedal once. The procedure can be interrupted by "heelback (-2)".
- 141 = 4** Automatic execution at fixed speed n1 after having pressed the pedal once. The procedure can be interrupted by "heelback (-2)".

The sewing speed is reduced in each stitch depending on the actual speed (max. 11 stitches before the end of stitch counting), in order to be able to stop exactly at the end of counting. When the light barrier is on, free sewing will be performed after stitch counting.

6.11.3 Seam with Stitch Counting When Light Barrier Is On

Function		Parameter
Light barrier On/Off	(LS)	009
Stitch counting On/Off	(StS)	015

When "stitch counting and light barrier function" is set, the number of stitches will be executed first, then the light barrier will be activated.

6.12 Free Seam and Seam with Light Barrier

Function		Parameter
Positioning speed	(n1)	110
Upper limit of maximum speed	(n2)	111
Limited speed according to setting of parameter 142	(n12)	118
Lower limit of maximum speed	(n2_)	121
Speed mode free seam	(SFn)	142

Speed control for the free seam and the seam with stitch counting can be selected using the speed mode.

142 = 0 Execution at pedal controlled speed

142 = 1 Execution at fixed speed n12, when pressing the pedal forward (position >1)

142 = 2 Execution at limited speed n12, when pressing the pedal forward (position >1)

142 = 3 Only for the seam with light barrier:

- Automatic execution at fixed speed after having pressed the pedal once.

- The seam end is initiated by light barrier.

- The procedure can be interrupted by heelback (-2).

- If the light barrier is not on, speed as with parameter setting **142 = 0**.

6.13 Light barrier

Function		Parameter
Light barrier On/Off		009

The light barrier function at the input of socket B18/8 is active only if parameter value **239 = 0**.

6.13.1 Speed after Light Barrier Sensing

Function		Parameter
Speed after Light Barrier Sensing	(n5)	114

6.13.2 General Light Barrier Functions

Function		Parameter
Light barrier compensating stitches	(LS)	004
Number of light barrier seams	(LSn)	006
Light barrier sensing uncovered/covered	(LSd)	131
Start of sewing blocked/unblocked with light barrier uncovered	(LSS)	132
Light barrier seam end with thread trimming On/Off	(LSE)	133
Speed of the light barrier compensating stitches	(PLS)	192

- After sensing the seam end, the compensating stitches are counted at light barrier speed.
- Suspension of the procedure with pedal in pos. 0 (neutral). Interruption of the procedure with pedal in pos. -2.
- The thread trimming operation can be disabled using parameter **133**. Stop in the basic position.
- Programming of max. 15 light barrier seams depending on the setting of parameter **006** with stop in the basic position. Thread trimming after the last light barrier seam.
- Light barrier sensing uncovered or covered at the seam end can be selected using parameter **131**.

- Start blockage with light barrier uncovered programmable using parameter **132**.
- Speed selection pedal controlled / n5 during the light barrier compensating stitches using parameter **192**.

6.13.3 Reflection Light Barrier LSM002

Sensitivity setting:

Set minimum sensitivity depending on the distance between light barrier and reflection area (turn potentiometer as far as possible to the left).

- Potentiometer directly on the light barrier module

Mechanical orientation:

Orientation is facilitated by a visible light spot on the reflection area.

6.13.4 Automatic Start Controlled by Light Barrier

This function is not possible in modes 8 and 9!

Function		Parameter
Delay of automatic start	(ASd)	128
Automatic start On/Off	(ALS)	129
Light barrier sensing uncovered	(LSd)	131
Start of sewing blocked with light barrier uncovered	(LSS)	132

This function enables an automatic start of the sewing operation as soon as the light barrier senses the insertion of fabric.

Prerequisites for the operation:

- Parameter **009 = 1** Light barrier On
- Parameter **129 = 1** Automatic start On
- Parameter **131 = 1** Light barrier sensing uncovered
- Parameter **132 = 1** No start of sewing with light barrier uncovered
- The pedal must be kept pressed forward at the seam end.

For safety reasons this function is enabled only after a normal start of sewing. The light barrier must be covered as long as the pedal is in position 0 (neutral). Then press the pedal forward. This function is disabled when the pedal is no longer pressed forward after the seam end.

6.13.5 Light barrier filter for knitted fabrics

Function		Parameter
Number of stitches of the light barrier filter	(LSF)	005
Light barrier filter On/Off	(LSF)	130
Light barrier sensing uncovered or covered	(LSd)	131

The filter prevents premature enabling of the light barrier function when sewing knitted fabrics.

- Enabling/Disabling of the filter using parameter **130**
- The filter is not active if parameter **005 = 0**
- Adaptation to the mesh is possible by varying the number of filter stitches.
- Knitted fabric sensing with light barrier
 - uncovered → covered, if parameter **131 = 0**.
 - covered → uncovered, if parameter **131 = 1**.

6.13.6 Functional Variations of the Light Barrier Input

Function	Parameter
Selection of the input function on socket B18/8	239

If the light barrier function is not used, a switching function can be assigned to the input on socket B18/8 as well as to inputs in1...i10.

The following input functions are possible with parameter **239**

239 = 0 Light barrier function: The input is prepared for a light barrier function.

239 = >0 All other input functions are identical, as described in the next section "Inputs for switches and keys".

6.14 Switching Functions of Inputs in1...i13

Function with or without control panel	Parameter
Selection of the input function	(in1...in10) 240...249 (in11-LSM) 239 (in12...in13) 550...551

The functions of the keys/switches connected to socket connectors ST2, B18 and B22 can be selected for inputs in1...in13 using parameters **240...249, 239 (LSM), 550, 551**.

240...249, 239 (LSM), 550, 551 =

0 Input function blocked

1 Needle up/down: Upon pressing the key, the drive runs from position 1 to position 2 or from position 2 to position 1. If the drive is not in the stop position, it runs to the pre-selected basic position.

2 Needle up: Upon pressing the key, the drive runs from position 1 to position 2.

3 Single stitch (basting stitch): Upon pressing the key, the drive performs one rotation from position 1 to position 1. If the drive is in position 2, it runs to position 1 upon pressing the key and from position 1 to position 1 each time the key is pressed again.

4 Full stitch: Upon pressing the key, the drive performs a full rotation depending on the set stop position.

5 Needle to position 2: If the drive is not in position 2, it runs to position 2 upon pressing the key. After power On the drive runs until it has been synchronized.

6 Machine run blockage effective with open contact: Upon opening the switch, the drive stops in the pre-selected basic position.

7 Machine run blockage effective with closed contact: Upon closing the switch, the drive stops in the pre-selected basic position.

8 Machine run blockage effective with open contact (unpositioned): Upon opening the switch, the drive stops immediately unpositioned.

9 Machine run blockage effective with closed contact (unpositioned): Upon closing the switch, the drive stops immediately unpositioned.

10 Run at automatic speed (n12): Upon pressing the key, the drive runs at automatic speed. The pedal is not used. (This input function is inverted in mode 9.)

11 Run at limited speed (n12): Upon pressing the key, the drive runs at limited speed. The pedal must be pressed forward.

12 Sewing foot lifting with pedal in position 0 (neutral)

15 Tape cutter or fast scissors (mode 6/7): Upon pressing the key, the tape cutter will be enabled for a preset time.

18 Unlocking the chain: Upon pressing the key, the motor performs a reverse rotation at the seam end. Moreover, backtacking and thread trimmer will be suppressed.

24 Needle to position 2: Upon pressing the key, the drive runs from position 1 to position 2, and the sewing foot is lifted. The start is blocked after that. Upon pressing the key again, the sewing foot is lowered, and the start is possible again.

27 Unlocking the chain: Upon pressing the key, the function "unlock the chain" will be performed without using the pedal.

28 External light barrier: In this mode it is possible to initiate the seam end using a key, not the light barrier. But the light barrier function must be On.

33 Speed n9: Below this speed, operation can be pedal controlled.

- 34 **Automatic speed n9:** The speed can be suspended by pressing the pedal to position 0.
- 37 **Speed n12 with break contact:** Below this speed, operation can be pedal controlled.
- 38 **Automatic speed n12 with break contact:** Not influenced by the pedal.
- 41 **Tape cutting only at machine standstill.**

6.15 Software Debouncing of All Inputs

Function	Parameter
Software debouncing of all inputs	(EnP) 238

- 238 = 0 No debouncing
- 238 = 1 Debouncing

6.16 Special pedal function Single stitch / Full stitch

Function	Parameters
Special pedal function Single stitch / Full stitch	(EZP) 041
Pedal travel forwards for detection of the special pedal function	(GrP) 042
Time for detection of the special pedal function	(dPd) 051
Speed for single stitch / full stitch	(n9) 122

With the single stitch / full stitch, it is possible to enable the execution of a stitch though pedal forwards actuation. For this it is necessary to move the pedal forward only far enough so that the percentage portion (e.g., 40%) of the maximum possible pedal travel (100%) set by the parameter **042**, is not exceeded.

The execution is done as single stitch (parameter **041 = 1**) or full stitch (parameter **041 = 2**)

If the travel set with parameter **042** is exceeded within the time set with parameter **051**, the drive runs with the speed specified by the respective pedal setting, even when under the threshold.

First after pedal 0-position can the special pedal function be actuated again.

The single/full stitch is executed in the speed set with parameter **122**. To ensure that only a single stitch is executed, the setting 300 rpm must not be exceeded.

6.17 Signal "Machine Running"

Function	Parameter
Mode "machine running"	(LSG) 155
Switch-off delay for signal "machine running"	(t05) 156

Set activation of signal "machine running" using parameters **155/156** .

- 155 = 0 Signal "machine running" Off.
- 155 = 1 Signal "machine running" will be issued whenever the drive is running.
- 155 = 2 Signal "machine running" will be issued whenever the speed is higher than 3000 RPM
- 155 = 3 Signal "machine running" will be issued whenever the pedal is not in position 0 or neutral.
- 155 = 4 Signal "machine running" will be issued only after motor synchronization (one rotation at positioning speed after power On).
- 156 Delay of switch-off time.

6.18 Signal Output Position 1

- Transistor output with open collector
- Signal whenever the needle is in the slot between position 1 and 1A
- Independent of sewing, thus also when turning the handwheel manually
- Suitable e. g. for the connection of a counter
- An inverted signal is issued at socket ST2/22

6.19 Actuator

6.19.1 Analog actuator

Function		Parameter
Selectable pedal functions	(-Pd)	019
Characteristic of the "analog pedal" EB401	(APd)	026

The effect of pedal actuation on the drive functions can be set using parameter 019:

- 019 = 0** Pedal in pos. -1 blocked in the seam. But with pedal in pos. -2 sewing foot lifting is possible in the seam (function active whenever the light barrier is On).
- 019 = 1** With pedal in pos. -1 sewing foot lifting is blocked in the seam.
- 019 = 2** With pedal in pos. -2 thread trimming is blocked (function active whenever the light barrier is On).
- 019 = 3** The functions "pedal in pos. -1" and "pedal in pos. -2" are active.
- 019 = 4** The functions "pedal in pos. -1" and "pedal in pos. -2" are blocked in the seam (function active whenever the light barrier is On).
- 019 = 5** Start seam end by placing the portal at -1 (slightly back)

The characteristic of the "analog pedal" can be set using parameter **026**:

- 026 = 0** Analog function off
- 026 = 1** 12-level selected, like prior pedal function of the digital actuator.
- 026 = 2** continuously variable
- 026 = 3** 24-level
- 026 = 4** 60-level (progressive)

7 Signal Test

Function		Parameter
Input and output test	(Sr4)	173

Function test of external inputs, multiple-function key bar and transistor power outputs with connected actuators (e.g. solenoids and solenoid valves).

7.1 Inputs to the control

- Select parameter **173**.
- **Operator control panel:** By actuating the keys or switches connected to inputs in1 to in7, the number of the input actuated appears on the display, e.g. **i06**. More than one switch and/or key may not be actuated at the same time.
If more than one key or switch is activated at once, the number of the lowest-numbered input is displayed. If, for example, **in3**, **in5**, **in6**, **in7** are actuated, **i03** is displayed.
Note: Checking of positions is described in chapter "Displaying the signal and stop positions".

7.2 Outputs of control

- Select parameter 173.
- Select the desired output using the +/- keys.
- On the built-in keypad in the control, the >> key is used to turn on the associated output, if it is connected and working.

Assignment of outputs		
Display	Function / Output	On socket ST2
OUT FL	Sewing foot lifting	35
OUT 1	M1	37
OUT 2	M2	28
OUT 3	M3	27
OUT 4	M4	36
OUT 5	M5	32
POS 1	Position 1	22

8 Table of Machine Functions and Adapter Cords



ATTENTION

Before switching functional sequences, detach cables from the inputs and outputs! Please ensure that the machine installed provides the functional sequence to be set! Then proceed with the setting using parameter 290!

Setting the functional sequence using parameter 290

				Functions / Outputs							
		Power transistors →	FL	M1	M2	M3	M4	M5			
Mode	Function / Machine	Adapter	ST2/35	ST2/37	ST2/28	ST2/27	ST2/36	ST2/32			
0	Lockstitch: e. g.		FL	FA1	FA2	FW	FA1+2	ML			
	Brother (737-113, 737-913)	1113420	FL	FA1 +	FA2	FW					
	Aisin (AD3XX, AD158, 3310; EK1)	1112815	FL	FA1 +	FA2	FW					
	Pfaff (563, 953, 1050, 1180)	1113491	FL	FA1	FA2	FW		ML			
	Dürkopp Adler (210, 270)	1112845	FL	FA1 +	FA2	FW					
2	Lockstitch: e. g.		FL		FA	FSPL	FL1	ML			
	Singer (212 UTT)	1112824	FL		FA	FSPL	FL1				
3	Lockstitch: e. g. Dürkopp Adler (467)		FL	FA	ML	FW	FSPL				
5	Chainstitch: parallel sequence		FL	M1	M2	M3	M4	ML			
	Yamato (VC/VG series)	1113345	FL	FA		FW		ML			
	Kansai (RX 9803)	1113130	FL	FA		FW		ML			
	Pegasus (W500/UT, W600/UT/MS with or without stitch condensing)	1112821	FL	FA	FA	FW					
	Union Special (34700)	1112844	FL	FA	FA	FW		NK/ML			
	Global (CB2803-56)	1112866	FL			FA					
	Rimoldi (F27)	1113096	FL	FW	FAO	FAU		ML			
6	Chainstitch: tape cutter/fast scissors		FL	M1	M2	AH1	AH2	ML			
7	Overlock		FL	M1	M2	AH	FSPL	ML			
8	Backlatch		FL	PD _{≤-1}	PD _{≥1}	PD _{≥1*}		ML			
	Pegasus	1113234		PD _{≤-1}	PD _{≥1}						
9	Backlatch		FL	PD _{≤-1}	PD _{≥1}	PD _{≥1*}		ML			
	Yamato (ABT3)	1112826		PD _{≤-1}	PD _{≥1}						
	Yamato (ABT13, ABT17)	1113205		PD _{≤-1}	PD _{≥1}						
14	Lockstitch: e. g.		FL	FA1+2	FA2	FW	FA1	ML			
	Juki (5550-6)	1112816	FL	FA1+2		FW					
	Juki (5550-7, 8500-7, 8700-7)	1112816	FL	FA1+2		FW					
	Adapter for position sensors incorporated in the handwheel	1113157									

*) The signal issued at this output is inverted!

Explanation of letter symbols of the above table and chapter "Timing Diagrams"

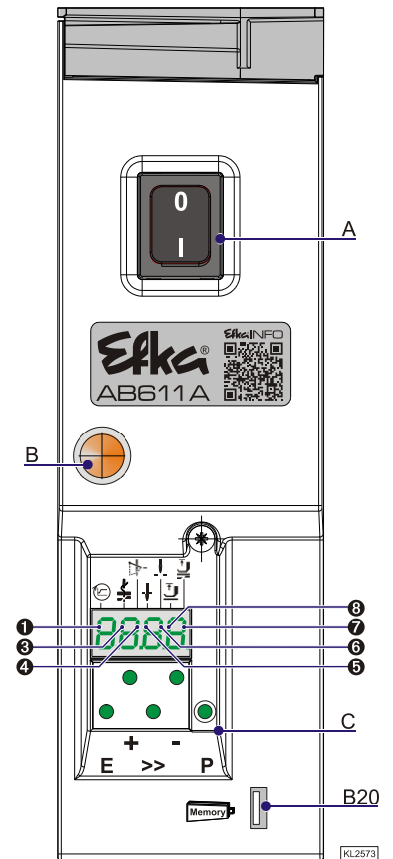
Outputs:

AH	Tape cutter	FL1	Sewing foot lifting without pulsing
AH1/AH2	Fast scissors	FSPL	Thread tension release
FA	Thread trimmer	FW	Thread wiper
FA1	Thread trimmer pos. 1...1A	ML/NK	Machine running / Needle cooling
FA1+2	Thread trimmer pos. 1...2	PD _{≥1}	Pedal forwards until the engine is running (min. to max. rotational speed)
FA2	Thread trimmer pos. 1A...2	PD _{≤-1}	Pedal slightly back (FL) or entirely back (FA)
FAO	Needle thread trimmer	PD=0	Pedal in pos. 0 (neutral)
FAU	Bobbin thread trimmer	PD-2	Full heelback (FA)
FL	Sewing foot lifting		

9 Operating Elements and Socket Connectors

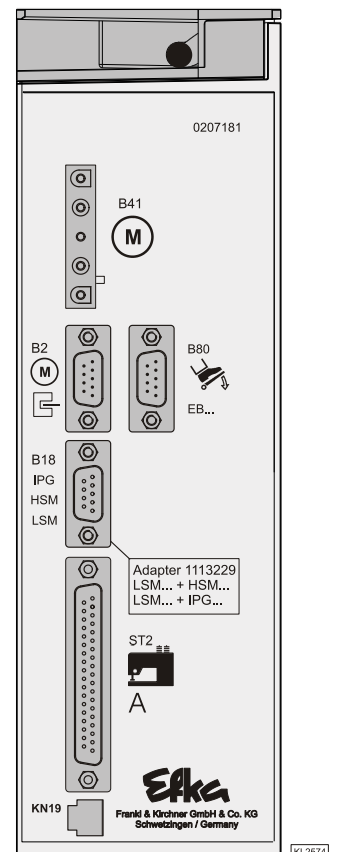
9.1 Positions of the Front Side

A	Power switch
B	Mains pilot lamp
C	Control panel (onboard module) + Display (4 digit 7 segment display)
Key	
P	Call or exit programming mode
E	Softstart On/Off Enter key for modifications in the programming mode
+	Thread trimmer/thread wiper On/Off In the programming mode - increase of the value indicated
>>	Basic position 1 or 2 Shift key in the programming mode
-	Automatic sewing foot lifting at stop in the seam On/Off Automatic sewing foot lifting after thread trimming On/Off In the programming mode – decrease of the value indicated
The upper vertical segments of the 4 digit 7 segment display indicate the switching states of foot lifting and basic position.	
1	Softstart On/Off
3	Thread trimmer On/Off Tape cutter at the start of the seam On/Off (Mode 7)
4	Thread wiper On/Off Tape cutter at the seam end On/Off (Mode 7)
5	Basic position "needle position 1"
6	Basic position "needle position 2"
7	Automatic sewing foot lifting at stop in the seam
8	Automatic sewing foot lifting after the thread trimming operation
Connector	
B20	USB Memory Stick



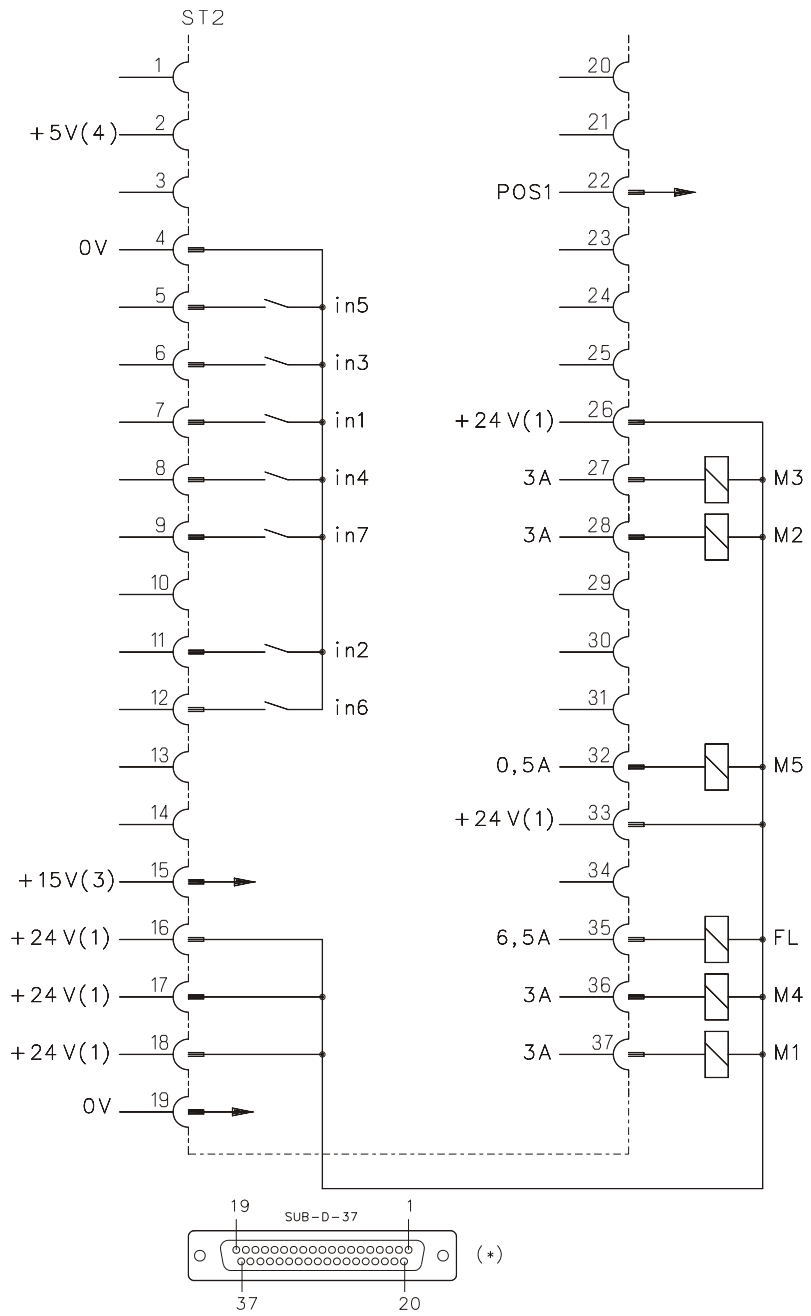
9.2 Positions of the Rear Side

Steckverbinder	
B2	Commutation transmitter
B18	Light barrier module LSM002 - Hall sensor module HSM001 - Pulse encoder IPG001 (Adapter cord 1113229 in case of multiple assignment)
B41	Motor power supply
B80	Actuator
ST2	Socket for inputs and outputs e. g. solenoids, solenoid valves, displays, keys and switches
KN19	Knee switch



9.3 Connection Diagrams

Inputs switched to 0V



BI2005

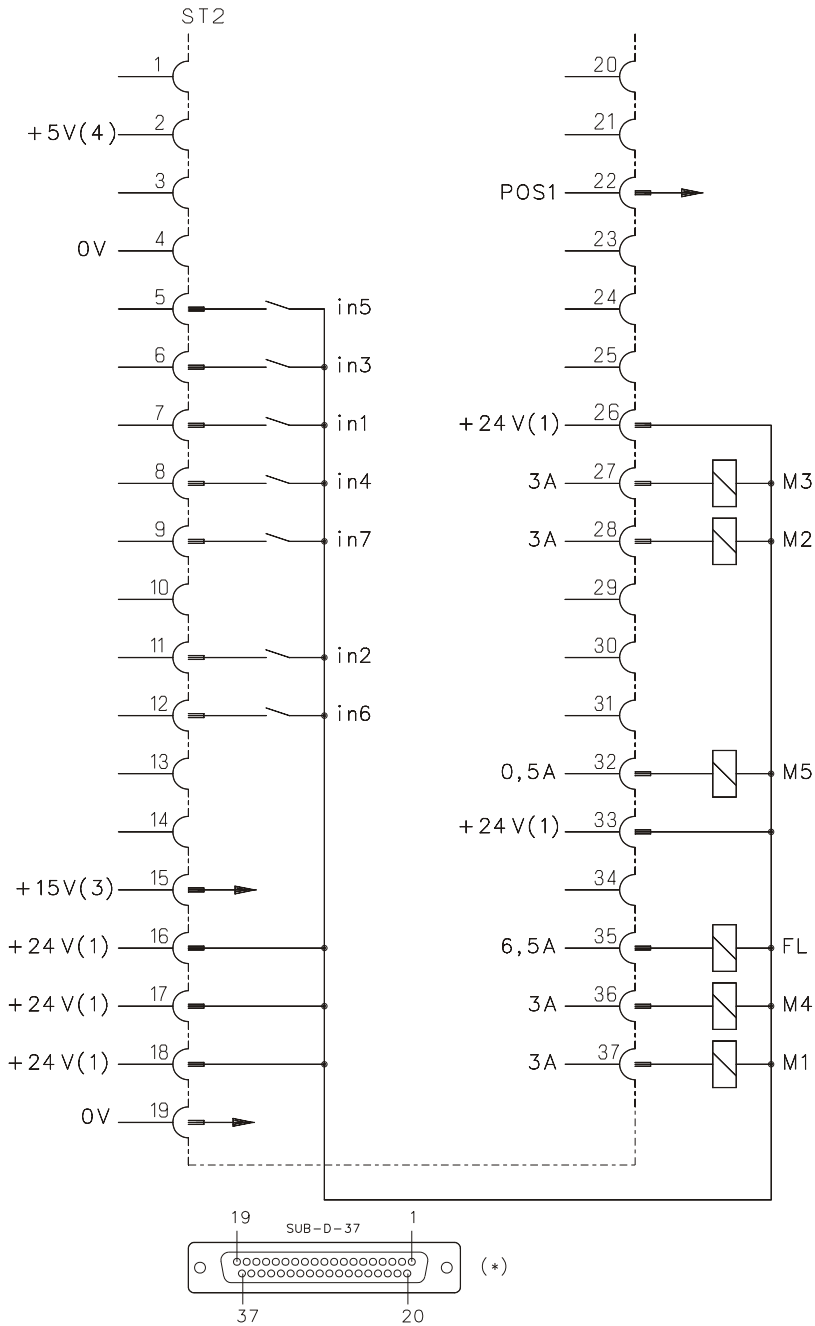


Attention

When connecting the outputs, ensure that a total power of 96VA constant load will not be exceeded!

in1	Input 1	M1	Output 1
in2	Input 2	M2	Output 2
in3	Input 3	M3	Output 3
in4	Input 4	M4	Output 4
in5	Input 5	M5	Output 5
in6	Input 6	FL	Sewing foot lifting
in7	Input 7	POS1	Position 1

Inputs switched to +24V



BI2006



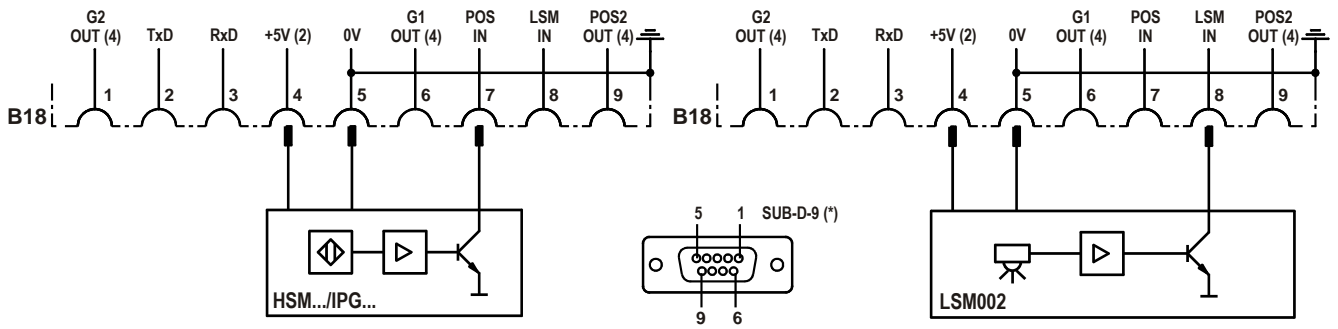
Attention

When connecting the outputs, ensure that a total power of 96VA constant load will not be exceeded!

- 1) Nominal voltage +24V, no-load voltage max. +30V momentarily after power on
- 2) Transistor output with open collector max. 40V, I_{max} 10mA
- 3) Nominal voltage +15V, I_{max} 30mA
- 4) Nominal voltage +5V, I_{max} 20mA
- *) Front view of the control (component side) and/or rear view of the outgoing connecting cable

Connection of a HSM001 Hall sensor module or an IPG001 pulse encoder

Connection of a LSM002 light barrier module

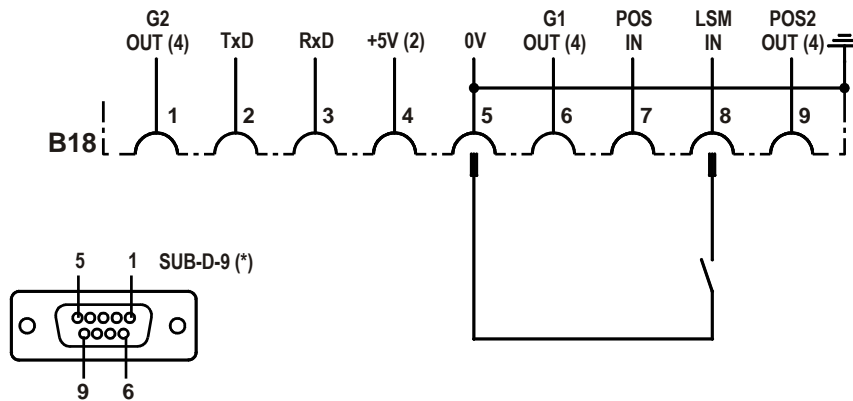


BI1174a

Adapter cord 1113229 in case of multiple assignment of socket B18!

POS2 OUT	Output for position 2	LSM IN	Possibility of connecting a light barrier module to socket B18/8
POS IN	Input for positions (e. g. connection of a sensor)	LSM002	Reflection light barrier module
G1/G2 OUT	Output of generator impulses	HSM001	Hall sensor module
TXD/RXD	Serial transmission lines	IPG...	Pulse encoder

If parameter 239 is set to >0, it is possible to operate a key at the input of the B18/8 connector.



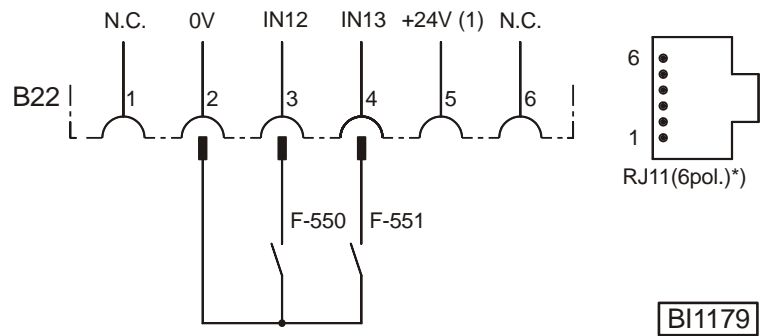
BI1159a

There is a supply voltage of +5V on the B18/4 socket for external devices. This voltage can be switched to +15V using parameter 362.

2) Nominal voltage +5 V, I_{max} 100 mA (switchable to +15 V, 100 mA)

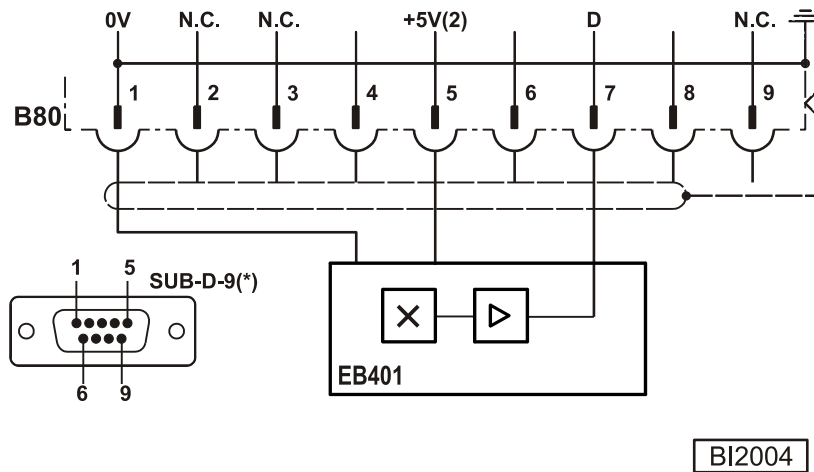
4) Logic level output +5 V, I_{max} 5 mA

*) Front view of the control (component side) / rear view of the outgoing connecting cable



IN12	Input 12, function programmable using parameter 550	IN13	Input 13, function programmable using parameter 551
------	---	------	---

Connection of an analog actuator EB401



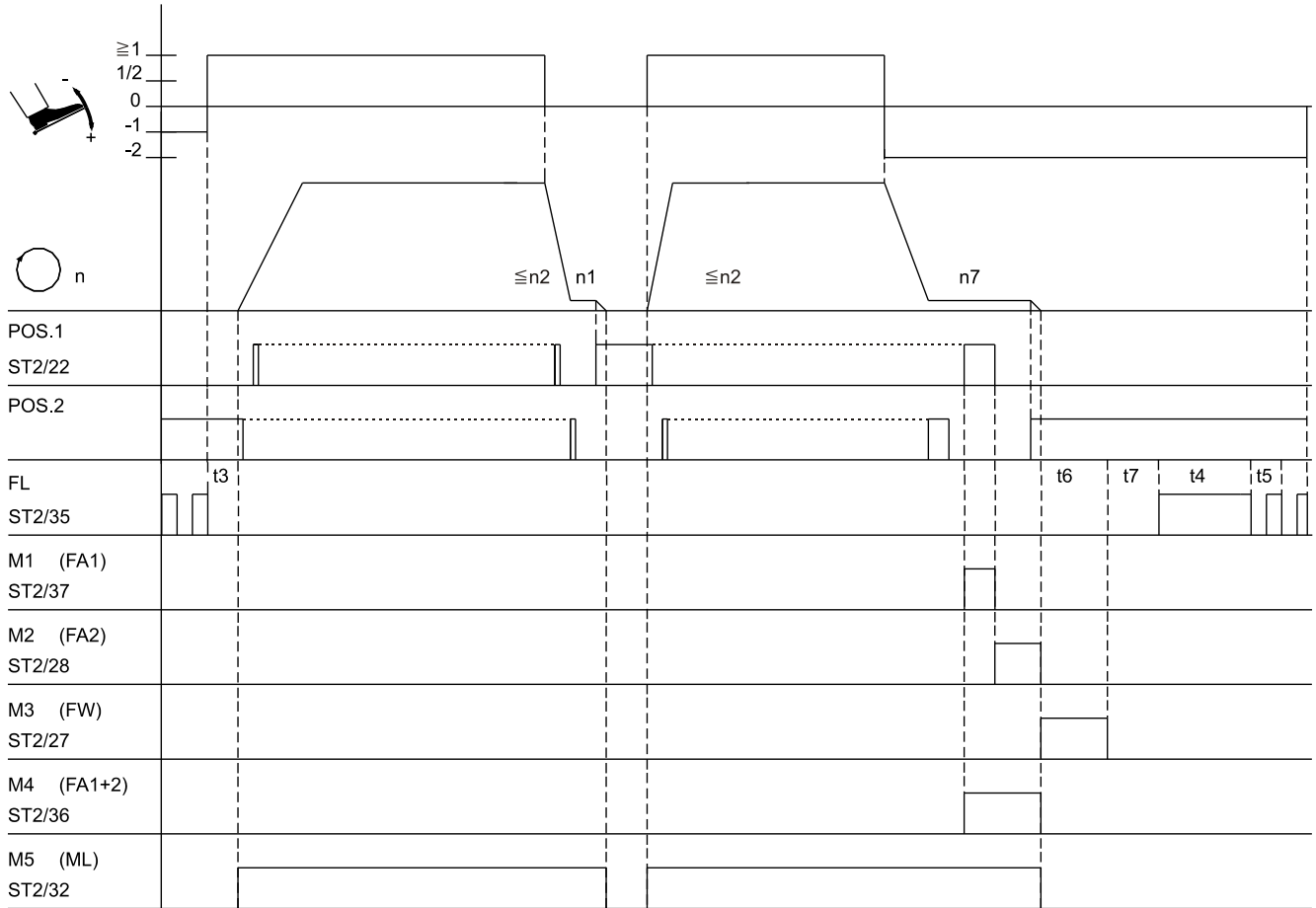
1) Nominal voltage +24 V, no-load voltage max. +30 V momentarily after power on

2) Nominal voltage +5 V, I_{max} 20 mA

*) Front view of the control (component side) and/or rear view of the outgoing connecting cable

10 Timing Diagrams

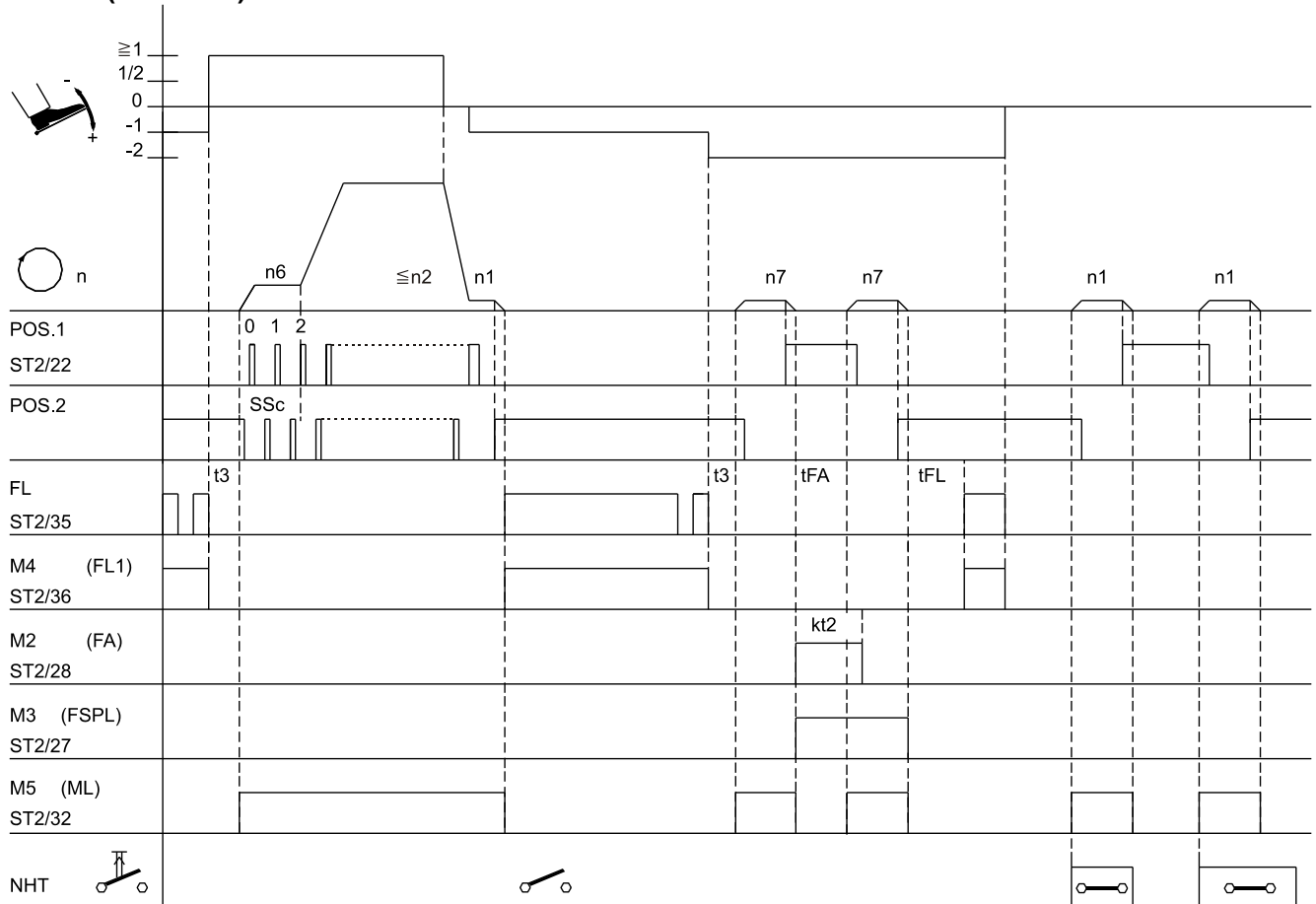
Mode 0 (lockstitch)



0326/MODE-00

Mark	Function	Parameter	Control		
FAm	Mode 0	290 = 0			
n1	Positioning speed	110			
n2	Maximum speed	111			
n7	Trimming speed	116			
t3	Start delay from lifted sewing foot	202			
t4	Full power of sewing foot lifting	203			
t5	Pulsing of sewing foot lifting	204			
t6	Thread wiper ON period	205			
t7	Sewing foot switch-on delay after thread wiper	206			

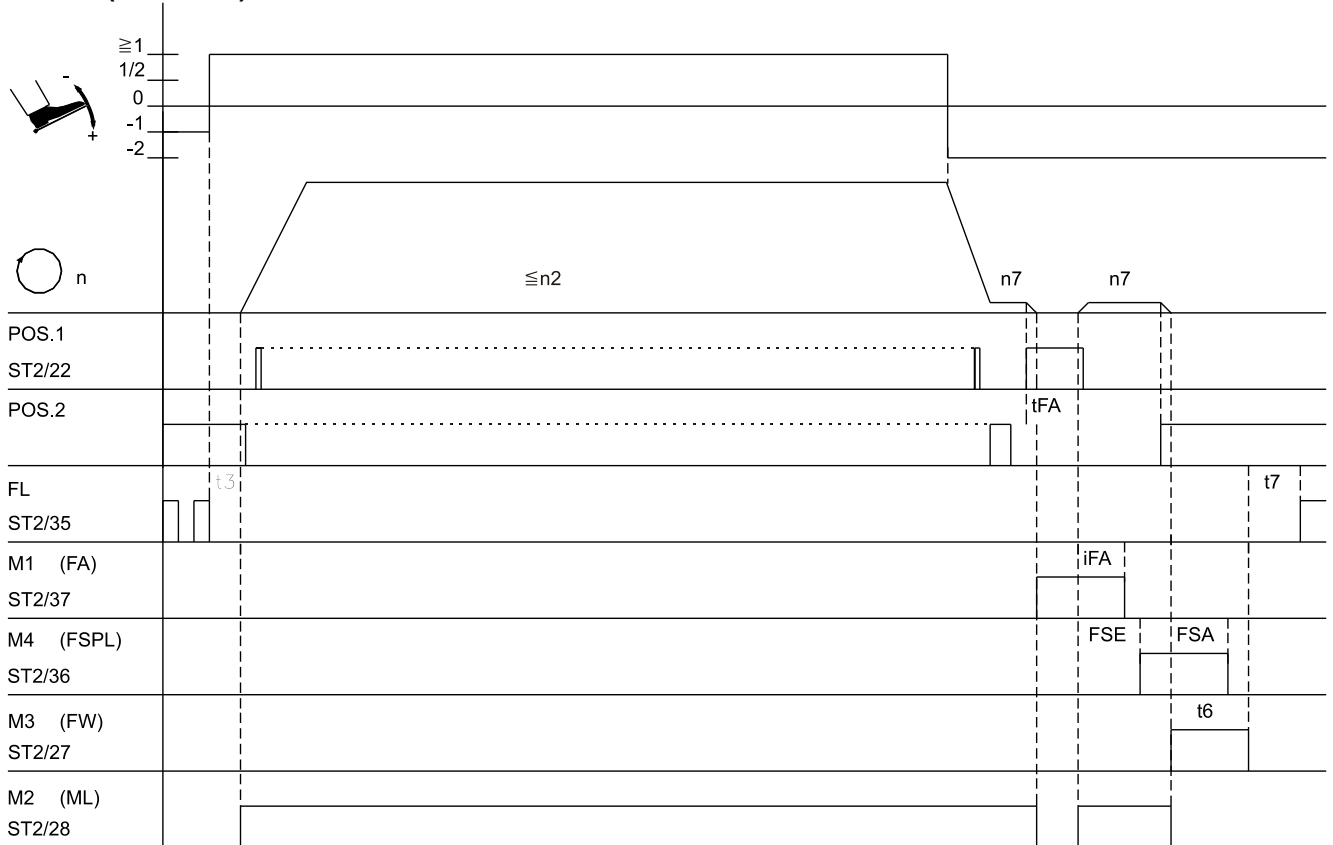
Mode 2 (lockstitch)



0326/MODE-02

Mark	Function	Parameter	Control		
FAm	Mode 2	290 = 2			
SSt	Softstart	134 = 1			
n1	Positioning speed	110			
n2	Maximum speed	111			
n6	Softstart speed	115			
n7	Trimming speed	116			
SSc	Softstart stitches	100			
t3	Start delay from lifted sewing foot	202			
tFL	Switch-on delay of sewing foot lifting	211			
tFA	Stop time for thread trimmer	253			
kt2	Thread trimmer ON period	283			

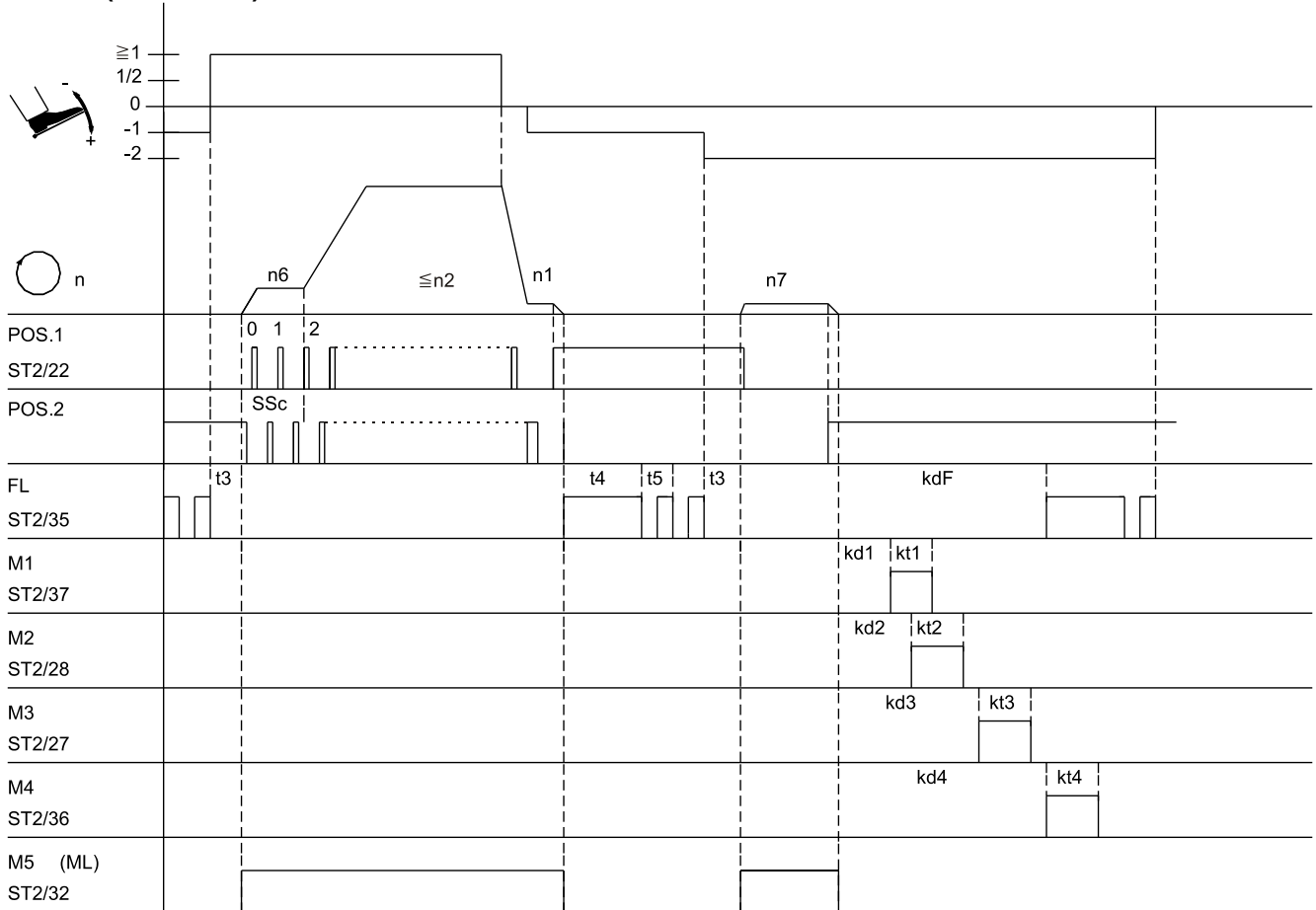
Mode 3 (lockstitch)



0326/MODE-03

Mark	Function	Parameter	Control		
FAm	Mode 3	290 = 3			
n2	Maximum speed	111			
n7	Trimming speed	116			
t6	Thread wiper ON period	205			
t7	Sewing foot switch-on delay after thread wiper	206			
iFA	Activation angle of the thread trimmer	250			
FSA	Switch-off delay of thread tension release	251			
FSE	Switch-on delay angle of thread tension release	252			
tFA	Stop time for thread trimmer	253			

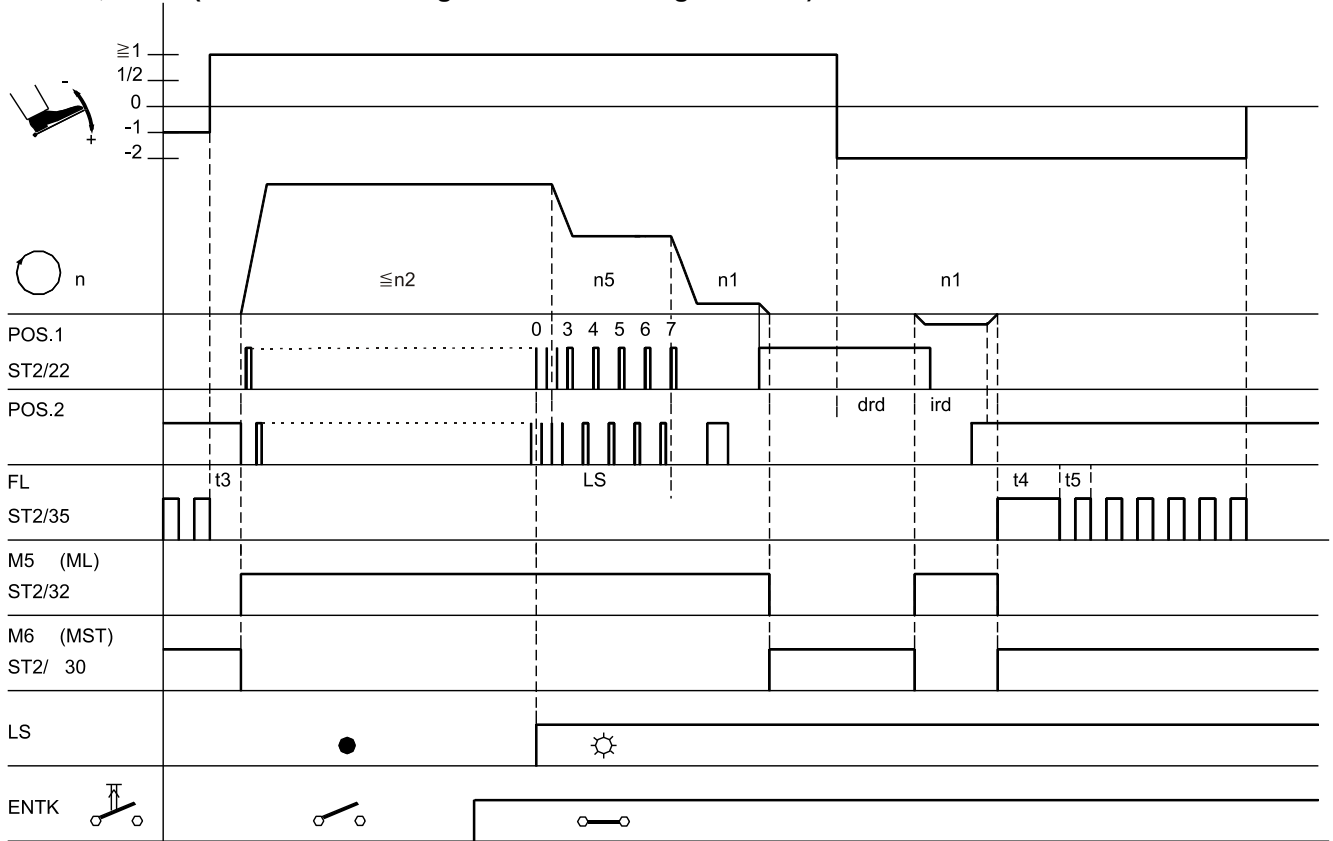
Mode 5 (chainstitch)



0326/MODE-05

Mark	Function	Parameter	Control		
FAm	Mode 5	290 = 5			
SSt	Softstart	134 = 1			
n1	Positioning speed	110			
n2	Maximum speed	111			
n6	Softstart speed	115			
n7	Trimming speed	116			
SSc	Softstart stitches	100			
t3	Start delay from lifted sewing foot	202			
t4	Full power of sewing foot lifting	203			
t5	Pulsing of sewing foot lifting	204			
kdF	Switch-on delay of sewing foot lifting	288			
kd1-kd4	Delay times of outputs M1...M4	280/2/4/6			
kt1-kt4	ON periods of outputs M1...M4	281/3/5/7			

Mode 5, 6 or 7 (function “unlocking the chain” with light barrier)

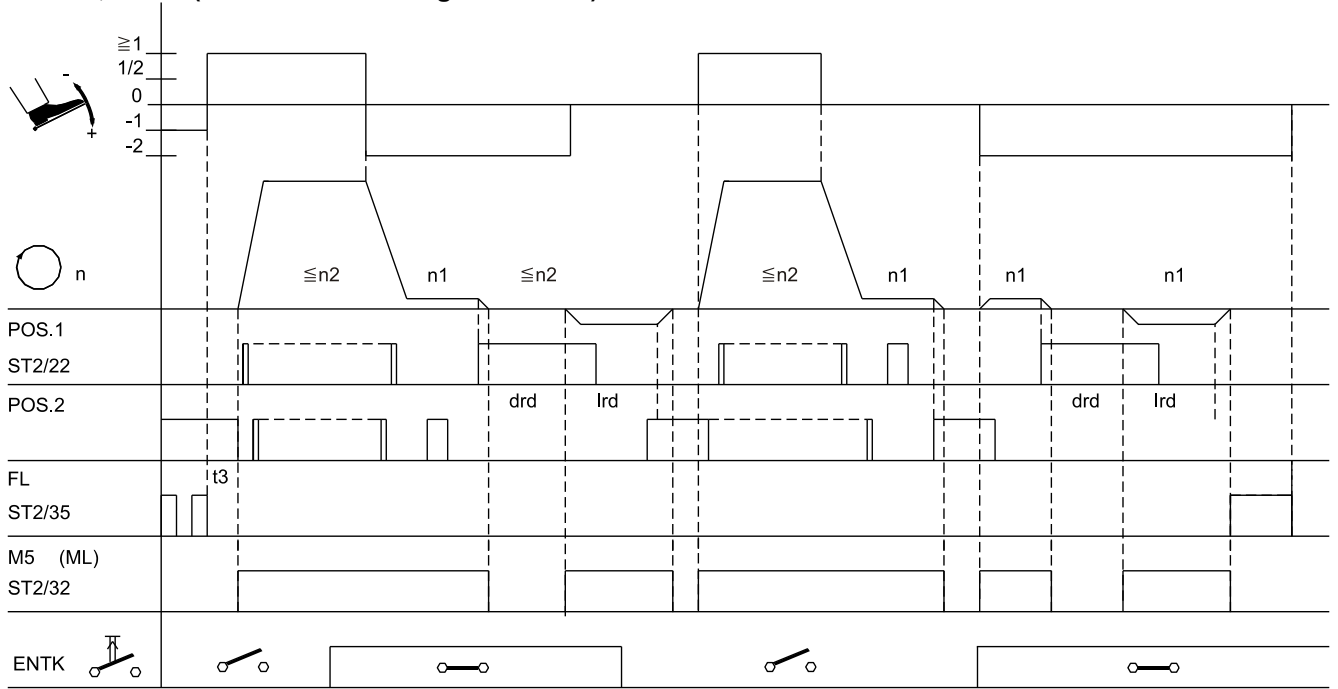


0326/ENTK-01

Mark	Function	Parameter	Control		
FAM	Mode 5	290 = 5			
drE	Direction of motor rotation	161 = 0	Clockwise		
Frd	Reverse motor rotation	182 = 1			
	Basic position 2		On		
	Thread trimmer *)		On	Key >>	
LS	Light barrier	009 = 1			
mEk	Unlock the chain automatically with light barrier	190 = 2			
in..	Assign the function “unlocking the chain” to an input	2..			
n1	Positioning speed	110			
n2	Maximum speed	111			
n5	Speed after light barrier sensing	114			
LS	Light barrier compensating stitches	004			
ird	Number of reversing increments	180			
drd	Switch-on delay of reverse motor rotation	181			
t3	Start delay from lifted sewing foot	202			
t4	Full power of sewing foot lifting	203			
t5	Pulsing of sewing foot lifting	204			

*) When unlocking the chain, the function “thread trimmer” is suppressed!

Mode 5, 6 or 7 (function “unlocking the chain”)

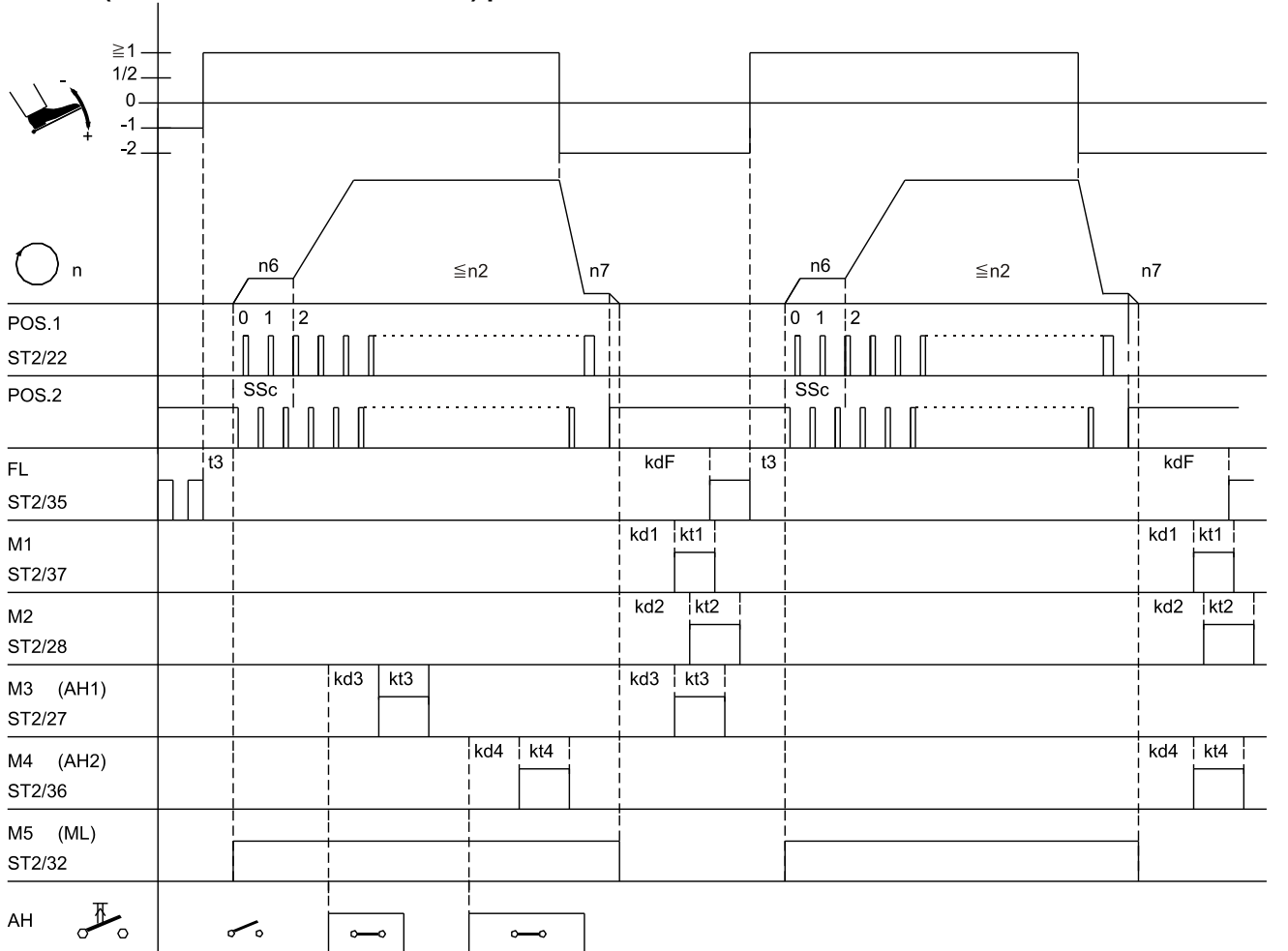


0326/ENTK-02

Mark	Function	Parameter	Control		
FAm	Mode 5	290 = 5	Key >>		
drE	Direction of motor rotation	Clockwise			
Frd	Reverse motor rotation	161 = 0 182 = 1			
in..	Basic position 2 Thread trimmer *) Assign the function “unlocking the chain” to an input	On On		2..	
n1	Positioning speed	110			
n2	Maximum speed	111			
ird	Number of reversing increments	180			
drd	Switch-on delay of reverse motor rotation	181			
t3	Start delay from lifted sewing foot	202			
t4	Full power of sewing foot lifting	203			
t5	Pulsing of sewing foot lifting	204			

*) When unlocking the chain, the function “thread trimmer” is suppressed!

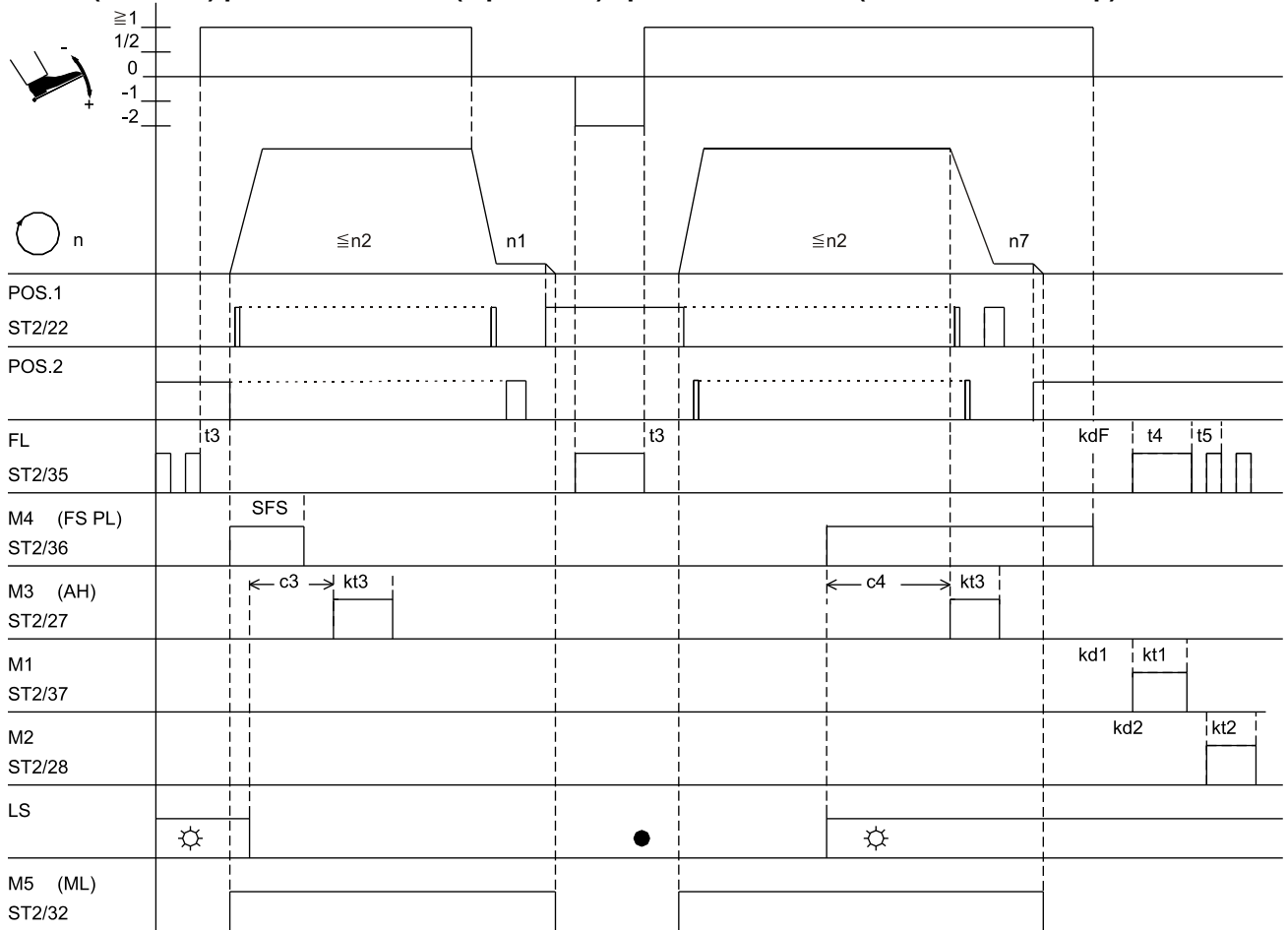
Mode 6 (chainstitch with fast scissors) parameter 232 = 1



0326/MODE-06

Mark	Function	Parameter	Control		
FAm	Mode 6	290 = 6			
SSt	Softstart	134 = 1			
USS	Chainstitch with fast scissors M3/M4	232 = 1			
n2	Maximum speed	111			
n6	Softstart speed	115			
n7	Trimming speed	116			
SSc	Softstart stitches	100			
t3	Start delay from lifted sewing foot	202			
kd1/kd2	Delay times of outputs M1/M2	280 / 282			
kt1/kt2	ON periods of outputs M1/M2	281 / 283			
kd3/kd4	Delay times of outputs M3/M4 (AH1/AH2)	284 / 286			
kt3/kt4	ON periods of outputs M3/M4 (AH1/AH2)	285 / 287			
kdF	Switch-on delay of sewing foot lifting	288			

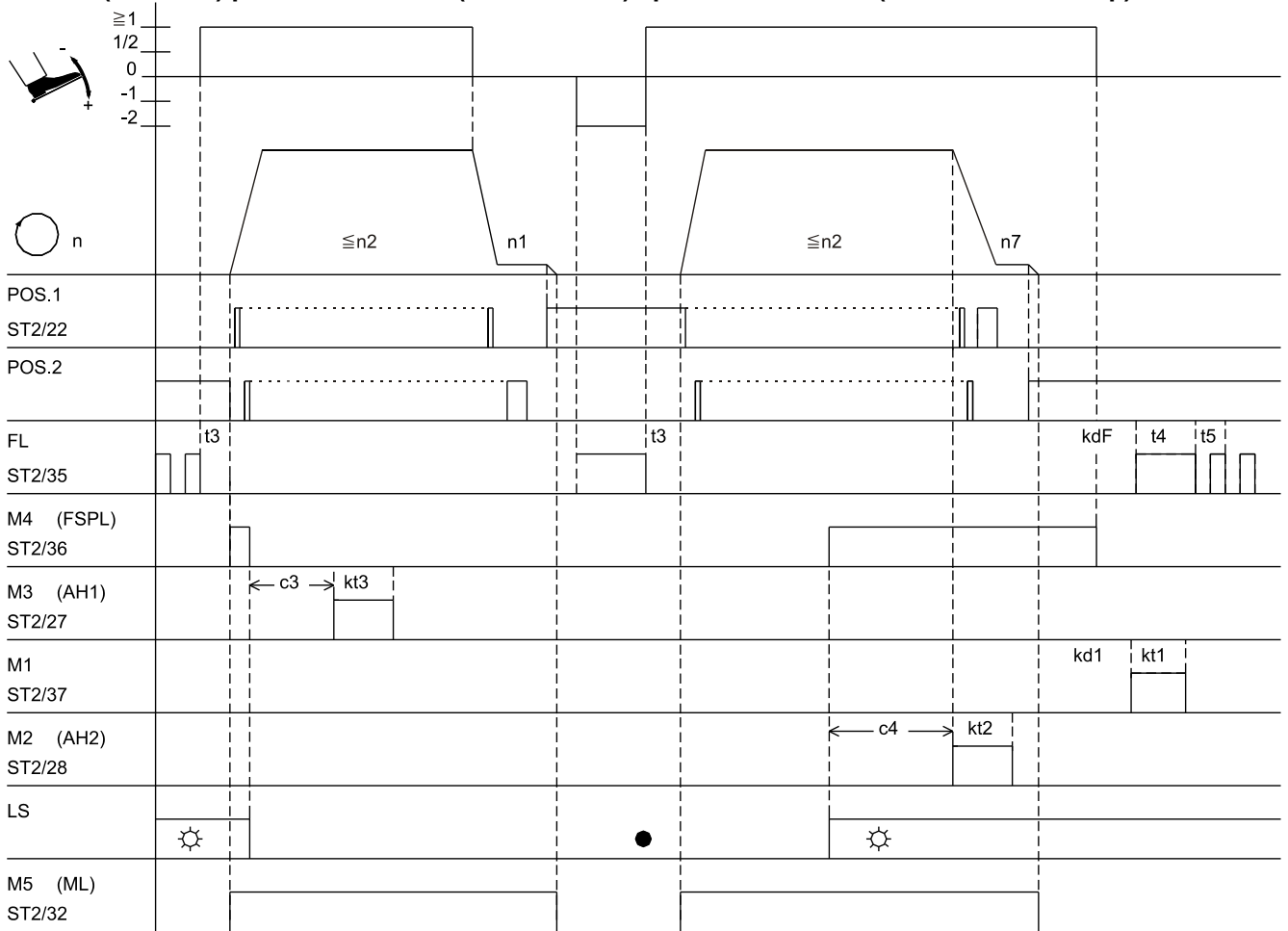
Mode 7 (overlock) parameter 232 = 0 (tape cutter) / parameter 018 = 0 (seam end with stop)



0326/MODE-07a

Mark	Function	Parameter	Control		
FAm	Mode 7	290 = 7			
LS	Sewing foot lifting at the seam end	On	Key -		
UoS	Light barrier	009 = 1			
-Pd	Sequence "overlock mode with stop"	018 = 0			
tFS	Function "pedal in pos. -2" blocked	019 = 2			
LSS	Beginning of thread tension release at the start of the seam	025 = 0			
PLS	Start blockage with light barrier uncovered	132 = 0			
USS	Speed n5 after light barrier sensing	192 = 0			
n1	Tape cutter function	232 = 0			
n1	Positioning speed	110			
n2	Maximum speed	111			
n5	Speed after light barrier sensing	114			
n7	Trimming speed	116			
c3	End counting for chain suction	002			
c4	Start counting for chain suction	003			
LS	Start counting for tape cutter	004			
SFS	Stitches from light barrier uncovered until end of thread tension release (M4)	157			
kd1/kd	Delay times of outputs M1/M2	280/282			
kt1/kt2	ON periods of outputs M1/M2	281/283			
kt3	ON period of tape cutter	285			
kdF	Switch-on delay of sewing foot lifting	288			

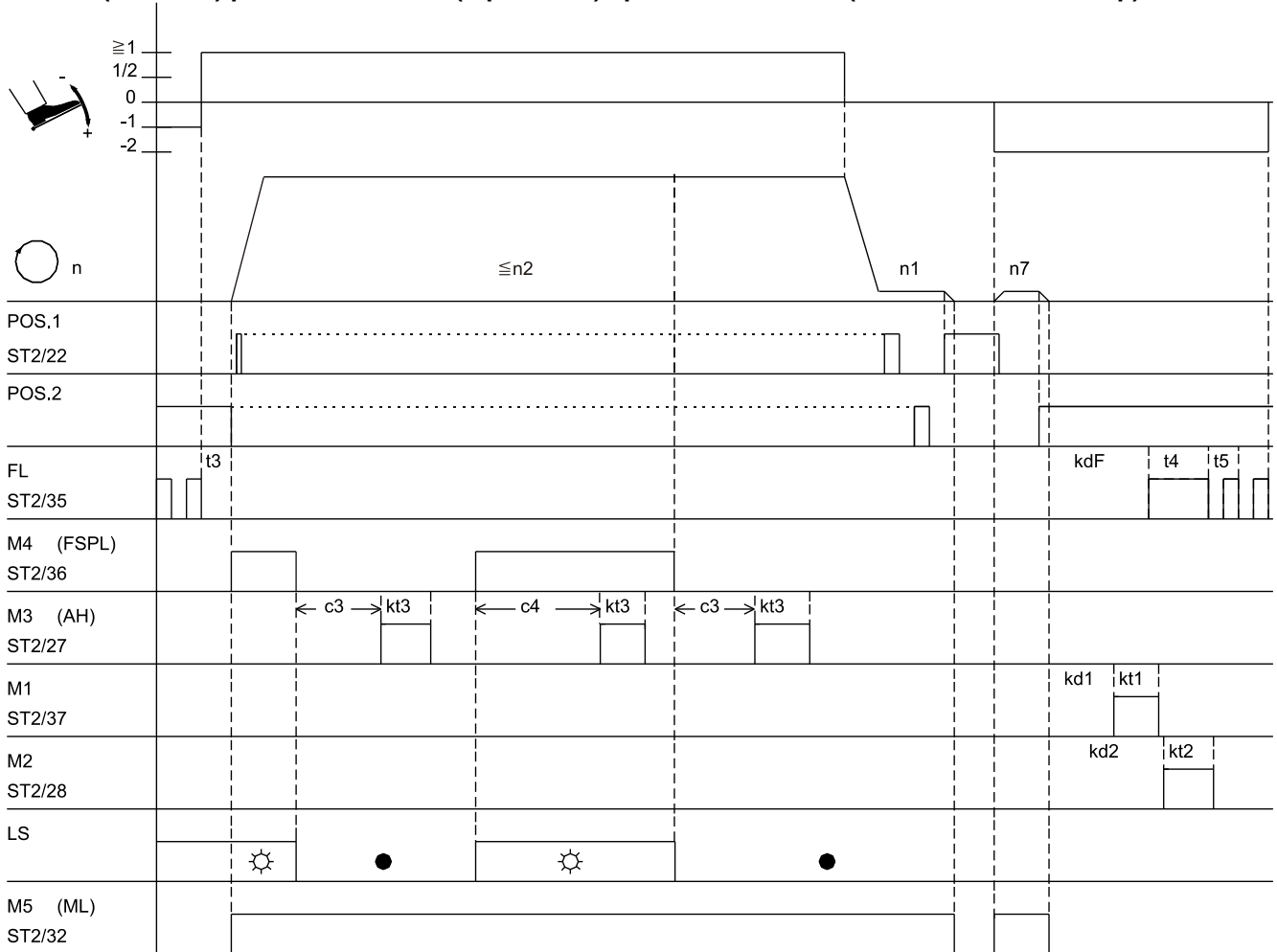
Mode 7 (overlock) parameter 232 = 1 (fast scissors) / parameter 018 = 0 (seam end with stop)



0326/MODE-07c

Mark	Function	Parameter	Control		
FAm	Mode 7	290 = 7			
LS	Sewing foot lifting at the seam end	On	Key -		
UoS	Light barrier	009 = 1			
-Pd	Sequence "overlock mode with stop"	018 = 0			
LSS	Function "pedal in pos. -2" blocked	019 = 2			
PLS	Start blockage with light barrier uncovered	132 = 0			
USS	Chain suction On after light barrier compensating stitches	192 = 0			
	Function "fast scissors"	232 = 1			
n1	Positioning speed	110			
n2	Maximum speed	111			
n5	Speed after light barrier sensing	114			
n7	Trimming speed	116			
c3	Start counting for tape cutter	002			
c4	End counting for tape cutter	003			
LS	Light barrier compensating stitches	004			
kd1	Delay time of output M1	280			
kd2	Delay time of output M2	282 = 0			
kt1/kt	ON periods of outputs M1/M2	281/283			
kt3	ON period of tape cutter	285			
kdF	Switch-on delay of sewing foot lifting	288			

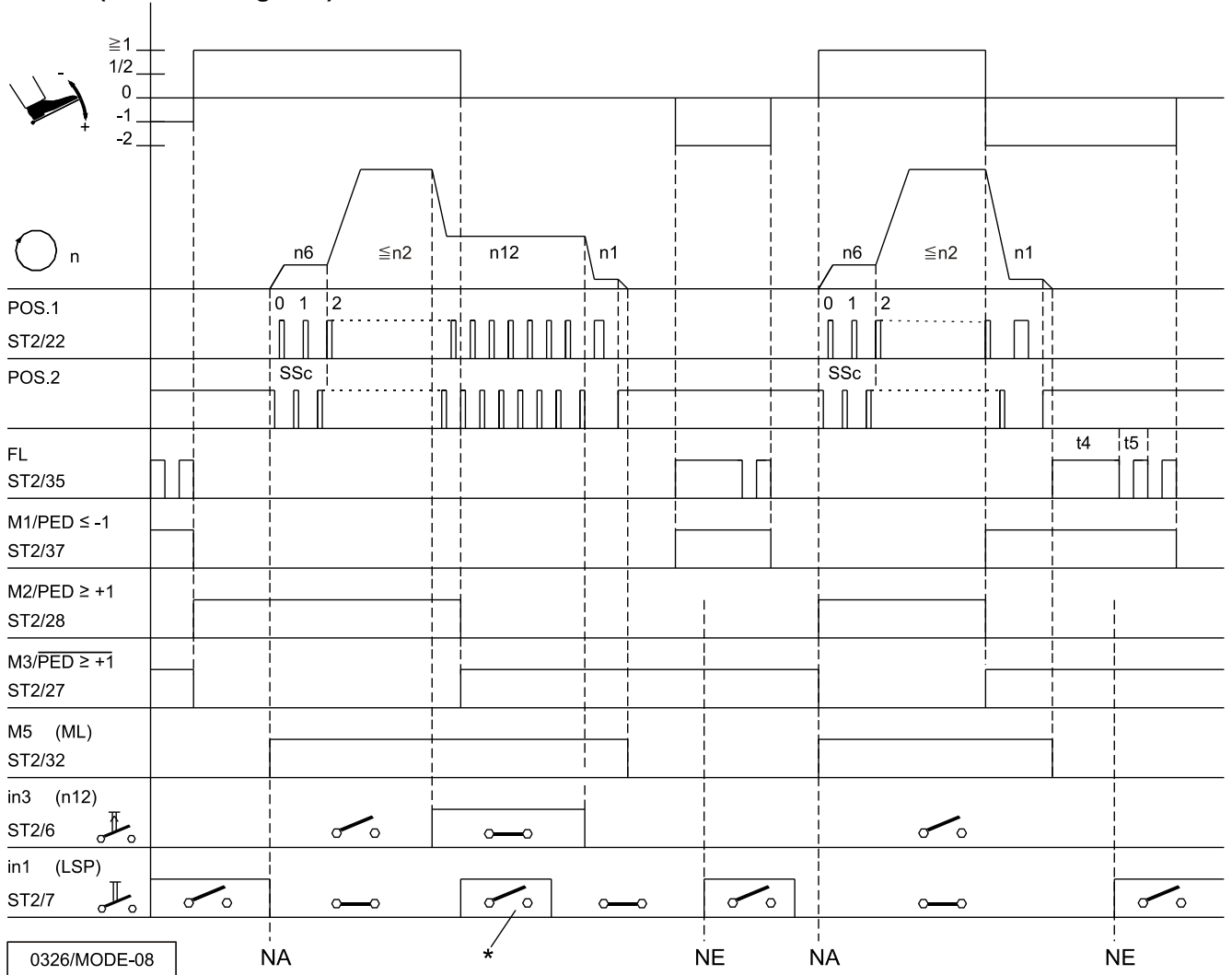
Mode 7 (overlock) parameter 232 = 0 (tape cutter) / parameter 018 = 1 (seam end without stop)



0326/MODE-07b

Mark	Function	Parameter	Control		
FAm	Mode 7	290 = 7			
LS	Light barrier compensating stitches	004 = 0			
LS	Light barrier	009 = 1			
UoS	Sequence "overlock mode at the seam end without stop"	018 = 1			
-Pd	Function "pedal in pos. -1/-2" activated in the seam	019 = 3			
SPO	Chain suction at the seam end until pedal in pos. 0	022 = 1			
kSA	Stitch counting at the start of the seam at fixed speed n3	143 = 1			
kSE	Stitch counting at the seam end at fixed speed n4	144 = 1			
USS	Tape cutter function	232 = 0			
n1	Positioning speed	110			
n2	Maximum speed	111			
n7	Trimming speed	116			
c3	Start counting for tape cutter	002			
c4	End counting for tape cutter	003			
t3	Start delay from lifted sewing foot	202			
kd1/kd2	Delay times of outputs M1/M2	280/282			
kt1/kt2	ON periods of outputs M1/M2	281/283			
kt3	ON period of tape cutter	285			
kdF	Switch-on delay of sewing foot lifting	288			

Mode 8 (backlatch Pegasus)



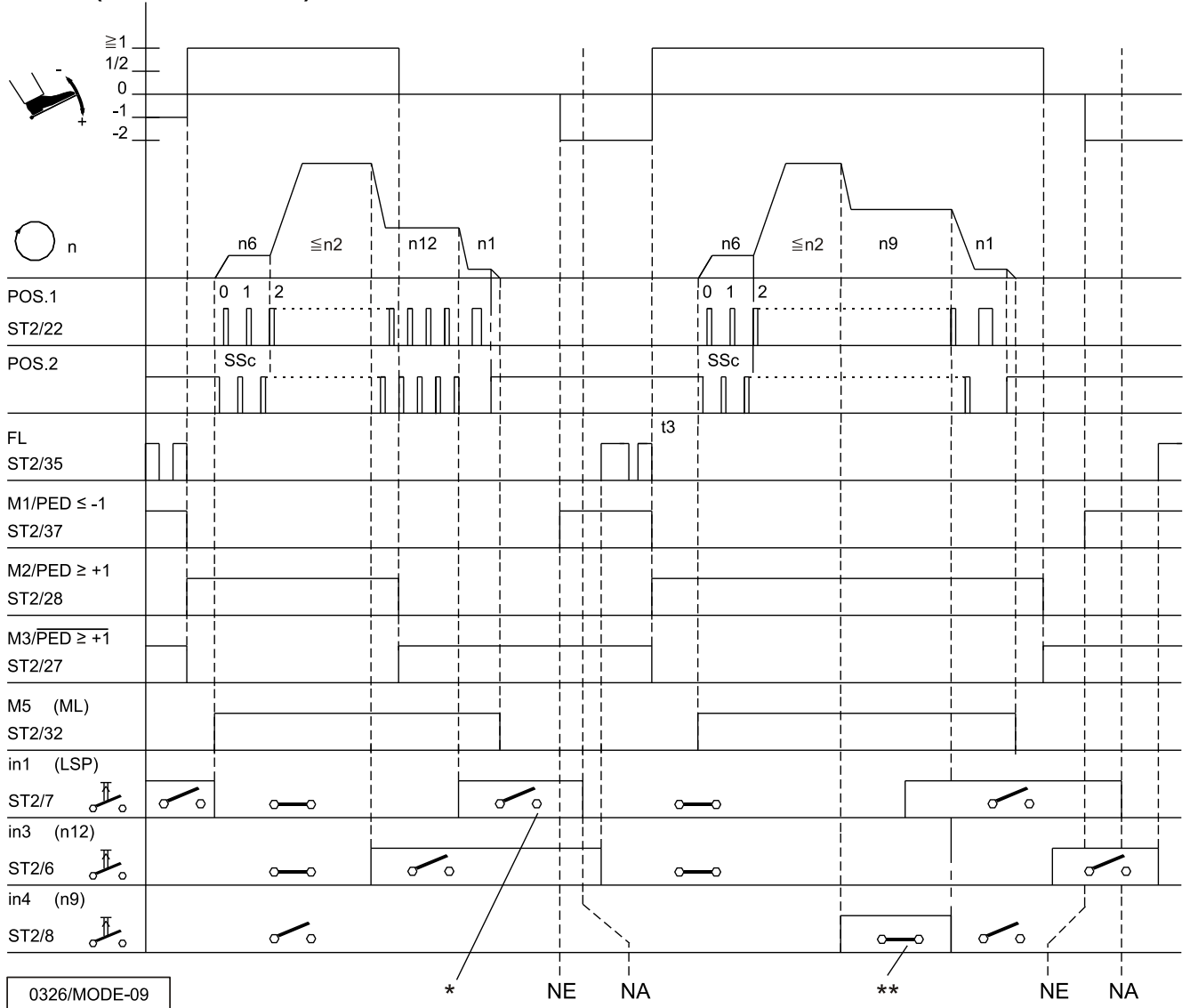
Mark	Function	Parameter	Control		
FAm	Mode 8	290 = 8	On		
SSSt	Basic position 2		Key >>		
in1	Softstart	134 = 1			
in3	Machine run blockage activated with open switch	240 = 6			
	n-Auto with closed switch	242 = 10			
n1	Positioning speed				
n2	Maximum speed				
n6	Softstart speed				
n12	Automatic speed				
SSc	Softstart stitches				
t4	Full power of sewing foot lifting				
t5	Pulsing of sewing foot lifting				

*) When automatic speed is On, machine run blockage (safety switch) does not work!

NA Start of seam

NE Seam end

Mode 9 (backlatch Yamato)



Mark	Function	Parameter	Control
FAm	Mode 9	290 = 9	
SSSt	Basic position 2	On	Key >>
SSSt	Softstart	134 = 1	
in1	Machine run blockage activated with open switch	240 = 6	
in3	Automatic speed with open switch (the function of input 3 is inverted in mode 9)	242 = 10	
PGm	Setting an external sensor to position 2 (A sensor must be connected!)	270	
n1	Positioning speed	110	
n2	Maximum speed	111	
n6	Softstart speed	115	
n9	Limited speed n9	122	
n12	Automatic speed	118	
SSc	Softstart stitches	100	
t3	Start delay from lifted sewing foot	202	
t4	Full power of sewing foot lifting	203	
t5	Pulsing of sewing foot lifting	204	

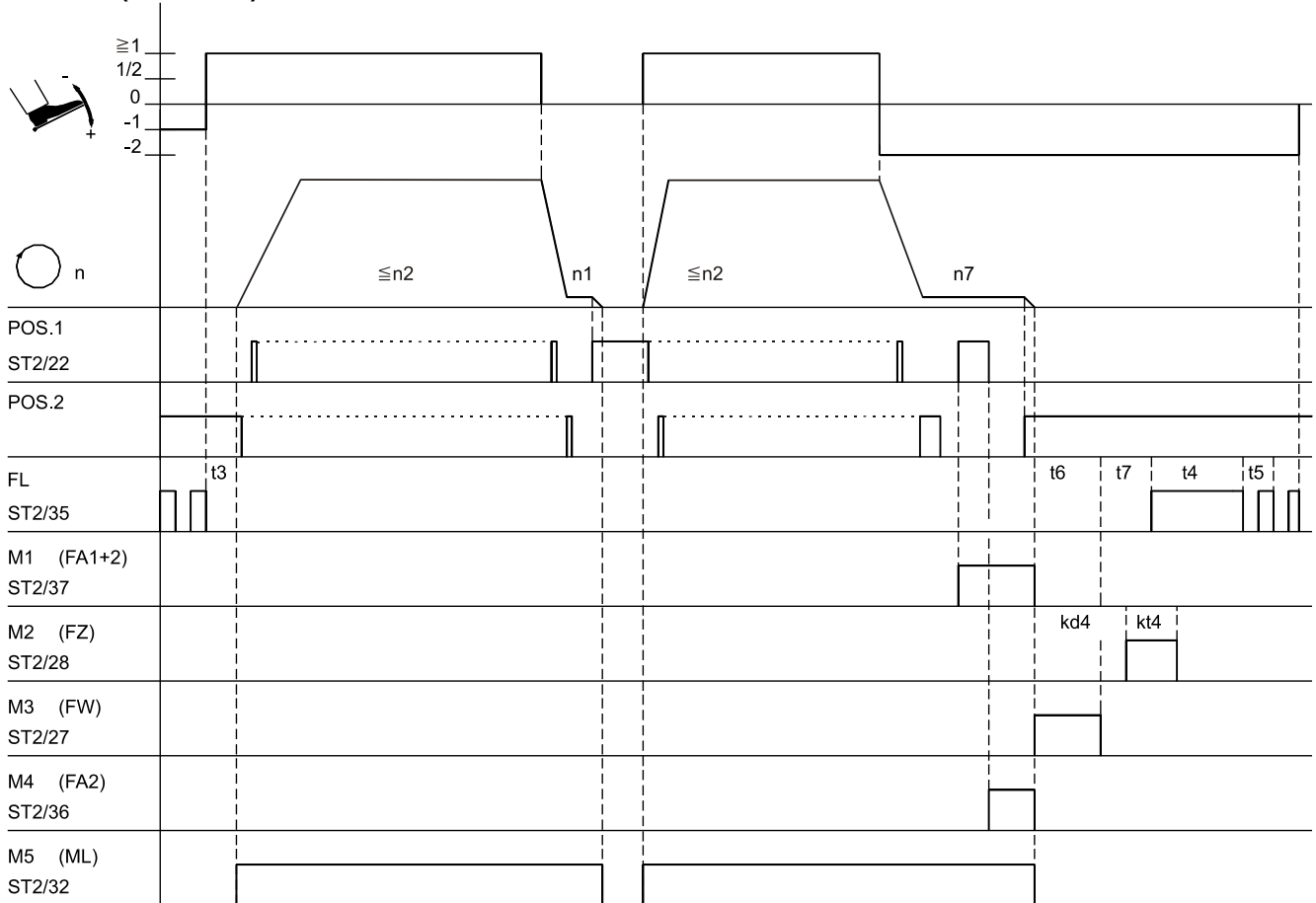
*) With this setting, machine run blockage (safety switch) takes priority over automatic speed!

**) Automatic speed n9 takes priority over machine run blockage (safety switch)!

NA Start of seam

NE Seam end

Mode 14 (lockstitch)



0326/MODE-14

Mark	Function	Parameter	Control		
FAm	Mode 14	290=14			
PGm	Setting an external sensor to position 1 (An external sensor must be connected!)	270=3			
n1	Positioning speed				
n2	Maximum speed				
n7	Trimming speed				
t3	Start delay from lifted sewing foot	202			
t4	Full power of sewing foot lifting	203			
t5	Pulsing of sewing foot lifting	204			
t6	Thread wiper ON period	205			
t7	Switch-on delay of the sewing foot after thread wiper	206			
kd4	Delay time output M2	286			
kt4	ON period output M2	287			

11 List of Parameters

11.1 Preset Values Depending on Mode

The preset values which are different in the various modes are listed in the table below. When switching the mode using parameter 290, these values change automatically.

Mode →	0	2	3	5	6	7	8	9	14
Parameter									
002	-	-	-	-	-	-	-	-	-
003	-	-	-	-	-	-	-	-	-
004	-	-	-	-	-	0	-	-	-
005	-	-	-	-	-	-	-	-	-
007	-	-	-	-	-	-	-	-	-
009	-	-	-	-	-	1	-	-	-
013	-	-	-	-	-	-	0	0	-
014	-	0	-	-	-	0	0	0	-
019	-	-	-	-	-	2	-	-	-
023	-	-	-	-	-	-	-	-	-
100	-	-	-	-	-	-	-	-	-
110	-	-	-	-	-	-	250	250	-
111	-	-	-	-	-	-	-	-	-
114	-	-	-	-	-	-	-	-	-
115	-	-	-	-	-	-	-	-	-
116	-	-	-	-	-	-	-	-	-
118	-	-	-	-	-	-	-	-	-
119	-	-	-	-	-	-	-	-	-
122	-	-	-	-	-	-	-	6000	-
130	-	-	-	-	-	1	-	-	-
131	-	-	-	-	-	-	-	-	-
132	-	-	-	-	-	0	-	-	-
133	-	-	-	-	-	-	-	-	-
134	-	-	-	-	-	-	-	-	-
161	-	-	-	0	0	0	0	0	-
180	-	-	-	-	-	-	-	-	-
181	-	-	-	-	-	-	-	-	-
182	-	-	-	-	-	1	-	-	-
190	-	-	-	-	-	2	-	-	-
192	-	-	-	-	-	1	-	-	-

- = For the positions marked with “-“ the preset values listed in the List of Parameters are used !

Mode →	0	2	3	5	6	7	8	9	14
Parameter									
201	-	-	-	-	-	-	-	-	-
202	-	-	-	-	-	-	0	0	-
203	-	-	-	-	-	-	-	-	-
204	-	-	-	-	-	-	-	-	-
205	-	-	-	-	-	-	-	-	-
206	-	-	-	-	-	-	-	-	-
207	-	-	-	-	-	-	-	-	-
208	-	-	-	-	-	-	-	-	-
209	-	-	-	-	-	-	-	-	-
211	-	-	-	-	-	-	-	-	-
220	-	-	-	-	-	-	-	-	-
221	-	-	-	-	-	-	-	-	-
222	-	-	-	-	-	-	-	-	-
223	-	-	-	-	-	-	-	-	-
224	-	-	-	-	-	-	-	-	-
239	-	-	-	-	-	-	-	-	-
240	-	-	13	-	-	-	6	6	-
241	-	-	7	-	-	-	-	-	16
242	-	-	1	-	-	-	10	38	-
243	-	-	22	-	-	-	1	34	-
244	-	-	16	-	-	-	-	-	-
245	-	-	19	-	-	-	12	12	-
246	-	-	33	-	-	-	-	-	-
250	-	-	180	-	-	-	-	-	-
251	-	-	-	-	-	-	-	-	-
252	-	-	-	-	-	-	-	-	-
253	-	-	70	-	-	-	-	-	-
254	-	-	-	-	-	-	-	-	-
269	-	-	-	-	-	-	-	25	-
270	-	-	-	-	-	-	-	1	3
271	-	-	-	-	-	-	-	-	200
272	-	-	-	-	-	-	-	-	-
280	-	-	-	-	-	100	-	-	-
281	-	-	-	-	-	-	-	-	-
282	-	0	-	-	-	200	-	-	-
283	-	-	-	-	-	-	-	-	-
284	-	-	-	-	0	0	-	-	-
285	-	-	-	-	-	-	-	-	-
286	-	-	-	-	0	0	-	-	-
287	-	-	-	-	-	0	-	-	-
288	-	-	-	-	-	-	-	-	-

- = For the positions marked with “-“ the preset values listed in the List of Parameters are used !

Further Presets Depending on Mode

(Positions and Functions Switchable Using the Control Keys)

Mode →	0	2	3	5	6	7	8	9	14
Parameter									
171/1E	-	-	-	-	-	-	-	-	-
171/2E	-	-	-	-	-	-	-	-	-
171/1A	-	-	-	-	-	-	-	-	-
171/2A	-	-	-	-	-	-	-	-	-
Basic pos.	1	1	1	2	2	2	2	2	1

11.2 Operator Level

NOTE

The preset values indicated apply to mode 0 (parameter 290 = 0).
For preset values applicable to other modes see table in chapter 11.1 »Preset Values Depending on Mode«.

Parameter	Designation	Unit	max	min	Preset	Ind.	
002	c3	Number of stitches of tape cutter at the start of the seam	stitches	254	0	2	
003	c4	Number of stitches of tape cutter at the seam end	stitches	254	0	2	
004	LS	Light barrier compensating stitches	stitches	254	0	7	
005	LSF	Number of stitches of the light barrier filter for knitted fabrics	stitches	254	0	1	
006	LSn	Number of light barrier seams		15	1	1	
007	Stc	Number of stitches for the seam with stitch counting	stitches	999	0	20	
009	LS	Light barrier On/Off		1	0	0	
013	FA	Thread trimmer On/Off		1	0	0	
014	Fw	Thread wiper On/Off		1	0	0	
015	StS	Stitch counting On/Off		1	0	0	
017	SAb	Stop when tape cutting at the seam end On/Off (function effective only in the overlock mode)		1	0	0	
018	UoS	0 = Sequence "overlock mode with stop" 1 = Sequence "overlock mode without automatic stop. When the command "run" is given, the drive runs at the pre-selected speed. With pedal in pos. 0 or light barrier covered , the program switches to the next start of a seam without issuing signals M1/M2. 2 = As with setting "1". But with pedal in pos. 0 signals M1/M2 will be issued, and the program switches to the next start of a seam. 3 = As with setting "1". But with pedal in pos. -2 signals M1/M2 will be issued, and the program switches to the next start of a seam. Intermediate stop and sewing foot lift with pedal in pos. -1 are possible. 4 = If the light barrier is covered during the end count for chain suction, the program switches immediately to the next start of a seam. If the end count has been completed and the light barrier remains uncovered, the drive stops. 5 = Abhacken am Nahtanfang mit Stopp		5	0	0	
019	-Pd	0 = Pedal in pos. -1 blocked in the seam. But with pedal in pos. -2 sewing foot lifting is possible in the seam (function active whenever the light barrier is On) 1 = With pedal in pos. -1 sewing foot lifting is blocked in the seam 2 = Pedal in pos. -2, thread trimming disabled. (Function only if parameter 009 = 1) 3 = Pedal in pos. -1 and -2 enabled in the seam. 4 = Pedal in pos. -1 and -2 blocked in the seam. (Function only if parameter 009 = 1) 5 = Start seam end by placing the portal at -1		5	0	3	
023	AFL	Automatic sewing foot lifting with pedal forward at the seam end, if light barrier or stitch counting is On 0 = Automatic sewing foot Off 1 = Automatic sewing foot On		1	0	1	
024	FSP	Coupled thread tension release and sewing foot lifting. The function can be activated only with a thread trimmer that depends on the angle. 0 = No coupling 1 = Coupled thread tension release and sewing foot at the seam end with thread trimmer off. 2 = Coupled thread tension release and sewing foot in the seam and at the seam end with thread trimmer off. 3 = Coupled thread tension release and sewing foot always effective.		3	0	0	

Operator Level

Parameter	Designation	Unit	max	min	Preset	Ind.
026 APd	Characteristic of the "analog pedal" EB401 0 = Analog function off 1 = 12-level, like previous pedal function 2 = continuously variable 3 = 24-level 4 = 60-level (progressive)		4	0	4	
041 EZP	Special pedal function Single stitch / Full stitch 0 = Function off 1 = Single stitch 2 = Full stitch		2	0	0	C
042 GrP	Pedal travel forwards for detection of the special pedal function	%	100	0	40	C
051 dPd	Time for detection of the special pedal function	ms	2550	0	100	C

11.3 Technician Level

Code no. 1907

Parameter	Designation	Unit	max	min	Preset	Ind.
100 SSc	Number of softstart stitches	stitches	254	0	2	
110 n1	Positioning speed	RPM	390	70	200	
111 n2	Upper limit setting range of the maximum speed	RPM	9900	n2_	5000	
114 n5	Speed after light barrier sensing	RPM	9900	200	1200	
115 n6	Softstart speed	RPM	9900	70	500	
116 n7	Trimming speed	RPM	700	70	200	
118 n12	Automatic speed for stitch counting	RPM	9900	400	3500	
121 n2	Lower limit setting range of the maximum speed	RPM	n2_	200	400	
122 n9	Limited speed n9	RPM	9900	200	2000	
128 ASd	Start delay, when command "start" is given by covering the light barrier (see parameter 129)	ms	2000	0	0	
129 ALS	Machine start by covering the light barrier (only in conjunction with parameter 132 = 1) 0 = Function Off 1 = Light barrier covered → pedal forward (>1) → machine run pedal controlled. 2 = Pedal forward (>1) → light barrier covered → machine run pedal controlled. 3 = Light barrier covered → machine run at automatic speed n12 (without pedal) Attention! If 129 = 3, the machine starts immediately after covering the light barrier without influence by the pedal! It can be stopped only by uncovering the light barrier or by machine run blockage! If machine run blockage is disabled, the machine starts immediately even if the light barrier is still covered!			0	0	
130 LSF	Light barrier filter for knitted fabrics		1	0	0	
131 LSd	0 = Light barrier sensing "covered" 1 = Light barrier sensing uncovered		1	0	1	
132 LSS	0 = Machine start possible with light barrier uncovered or covered. 1 = Machine start blocked with light barrier uncovered if parameter 131 = 1. Start blocked if light barrier darkened,		1	0	1	
133 LSE	Thread trimming operation, when completing the seam after light barrier sensing On/Off		1	0	1	
134 SSt	Softstart Ein/Aus		1	0	0	
140 dnE	Delay of seam end with pedal in pos. -2	ms	2550	0	0	
141 SGn	Speed status for the seam with stitch counting 0 = Speed controllable by the pedal up to the set maximum speed (parameter 111) 1 = fixed speed (parameter 118) without influence by the pedal (machine stop by pressing the pedal to the basic position) 2 = Limited speed controllable by the pedal up to the set limit (parameter 118) 3 = at fixed speed (parameter 118) can be interrupted by full heelback 4 = at fixed speed (parameter 110) can be interrupted by full heelback.			0	0	

Technician Level

Code no. 1907

Parameter	Designation	Unit	max	min	Preset	Ind.																
142 SFn	Speed status for the free seam and for the seam with light barrier 0 = Speed controllable by the pedal up to the set maximum speed (parameter 111) 1 = Fixed speed (parameter 118) without influence by the pedal (machine stop by pressing the pedal to the basic position) 2 = Limited speed controllable by the pedal up to the set limit (parameter 118) 3 = At fixed speed (parameter 118) can be interrupted by full heelback (only for seams with light barrier).		3	0	0																	
153 brt	Braking power at machine standstill		50	0	5																	
155 LSG	Mode signal run 0 = Signal Off. 1 = Signal run On. 2 = Signal "run" enabled when the speed is >3000 RPM. 3 = Signal with pedal <> 0. 4 = Signal enabled only after motor synchronization (one rotation at positioning speed after power On)		4	0	1																	
156 t05	Switch-off delay for the signal "run" or signal with pedal in pos. 0 (neutral)	ms	2550	0	0																	
157 SFS	Stitches until thread tension release Off after light barrier covered at the start of the seam (Only in mode 7)	stitches	254	0	0																	
161 drE	Direction of motor rotation 0 = Clockwise rotation 1 = Counterclockwise rotation		1	0	0																	
170 Sr1	Setting the reference position: - Press the E key - Press the >> key. - Turn handwheel until symbol on display goes off. Then set the handwheel to the reference position. - Press the P key twice																					
171 Sr2	Setting the needle positions: 1E = Start position 1 2E = Start position 2 1A = End position 1 2A = End position 2	degrees	359	0	26 319 200 355																	
172 Sr3	Display on the control: Pos. 1 bis 1A (LED-segment 5 lights up) Pos. 2 bis 2A (LED-segment 6 lights up)																					
173 Sr4	Testing of signal inputs and outputs Inputs to the control By actuating the switches connected to the control, the function of these switches is checked and displayed. With the switch open, OFF appears and with the switch closed, the corresponding input in1...in7, i11 (LSM), i12, i13 appears. Outputs of control				OFF																	
		<table border="1"> <thead> <tr> <th>Output</th> <th>Socket</th> </tr> </thead> <tbody> <tr> <td>Sewing foot lifting</td> <td>ST2/35</td> </tr> <tr> <td>M1</td> <td>ST2/37</td> </tr> <tr> <td>M2</td> <td>ST2/28</td> </tr> <tr> <td>M3</td> <td>ST2/27</td> </tr> <tr> <td>M4</td> <td>ST2/36</td> </tr> <tr> <td>M5</td> <td>ST2/32</td> </tr> <tr> <td>POS1</td> <td>ST2/22</td> </tr> </tbody> </table>	Output	Socket	Sewing foot lifting	ST2/35	M1	ST2/37	M2	ST2/28	M3	ST2/27	M4	ST2/36	M5	ST2/32	POS1	ST2/22				
Output	Socket																					
Sewing foot lifting	ST2/35																					
M1	ST2/37																					
M2	ST2/28																					
M3	ST2/27																					
M4	ST2/36																					
M5	ST2/32																					
POS1	ST2/22																					

Technician Level

Code no. 1907

Parameter	Designation	Unit	max	min	Preset	Ind.
176 Sr6	Service routine for total operating hours display. The process is as with display example of parameter 177.					
177 Sr7	Service routine for display of hours since the last service. Display example for the operator control panel: Press the E key → Display Sr7= Press the >> key → Display h t Press the E key → Display 0000 Press the >> key → Display h h Press the E key → Display 0000 Press the E key → Display Min Press the E key → Display 00 Press the E key → Display SEc Press the E key → Display 00 Press the E key → Display MS Press the E key → Display 000 Press the E key → Display rES Press the E key again to restart routine, or press the P key twice to return to operational status					
179 Sr5	Display of control program number with index and more identification numbers. The data is displayed in sequence by keystroke. Display example for the operator control panel: Press the E key → Display Sr5= Press the >> key → Display e.g. 5021 (prog. no) Press the E key → Display e.g. A (Index) Press the E key → Display e.g. 06 (Year) Press the E key → Display e.g. 10 (Month) Press the E key → Display e.g. 24 (Day) Press the E key → Display e.g. 16 (Hour) Press the E key → Display e.g. -- Press the E key → Display e.g. ---- Press the E key again to restart routine, or press the P key twice to return to operational status					
180 rd	Reversing angle	degrees	359	0	175	
181 drd	Switch-on delay of reverse motor rotation	ms	990	0	10	
182 Frd	Reverse motor rotation On/Off		1	0	0	
184 c6	Number of run-out stitches when unlocking the chain	stitches	254	0	20	
190 mEk	Function "unlock the chain" in modes 5, 6 and 7 (parameter 290) 0 = Unlocking the chain Off 1 = Unlocking the chain manually (with pedal in pos. -2 without cutting at the seam end) 2 = Unlocking the chain automatically - by means of light barrier or - pedal in pos. -2 (parameter 019) without cutting at the seam end 3 = Unlocking the chain automatically - by means of light barrier or - pedal in pos. -2 (parameter 019) with cutting and run-out stitches (parameter 184) at the seam end, then unlocking the chain (only if parameter 290 = 7) 4 = Unlocking the chain only with pedal in pos. -2. No unlocking the chain with seam end by means of light barrier, cutting and run-out stitches		4	0	1	
192 PLS	Speed of the light barrier compensating stitches 0 = Speed n5 after light barrier sensing 1 = Speed pedal controlled		1	0	0	

11.4 Supplier Level

Code no. 3112

Parameter	Designation	Unit	max	min	Preset	Ind.	
201	t2	Delay until speed release after start backtack	ms	2550	20	80	
202	t3	Sewing foot switch-on delay after thread wiper with half heelback	ms	500	0	50	
203	t4	Start delay after disabling the sewing foot lifting signal	ms	600	0	500	
204	t5	Time of full power of sewing foot lifting	%	Pa.254	1	40	
205	t6	Holding power for sewing foot lifting 1...100% 1% → low holding power 100% → high holding power	ms	2550	0	120	
206	t7	Thread wiper time	ms	800	0	40	
207	br1	Delay from end of thread wiper until sewing foot lifting On		55	1	15	
208	br2	Braking effect when varying the preset value ≤ 4 stages (indicated values only with transmission ratio 1:1)		55	1	20	
209	dFw	Braking effect when varying the preset value ≥ 5 stages (indicated values only with transmission ratio 1:1)	ms	2550	0	0	
211	tFL	Sewing foot lifting switch-on delay with thread wiper off	ms	500	0	60	
217	Sr	Number of operating hours before service in steps of 10 (operating hours recording enabled if set at "0").	hours	99900 ***)	00000	00000	
219	br3	Braking power at stop of the drive		55	1	4	
220	ALF	Accelerating power of the drive (indicated values only with transmission ratio 1:1)		55	1	35	
221	dGn	Speed gate 1	RPM	990	50	100	
222	tGn	Speed gate damping period	ms	990	0	20	
225	br4	Setting the braking curve for the light barrier and machine run blockage (values only with transmission ratio 1:1)		55	1	20	
231	Sn1	Execution of the first stitch after Power On at positioning speed		1	0	0	
232	USS	Overlock with fast scissors On/Off 0 = Tape cutter 1 = Fast scissors (set parameter 282 = 0)		1	0	0	
238	EnP	Software debouncing for all inputs: 0 = No debouncing 1 = Debouncing		1	0	1	
239	FEL	Selection of the input function on socket B18/8 0 = Light barrier function, if 009 = 1 All other functions as with parameter 240.		41	0	0	

***) The 4-digit value displayed must be multiplied by 10.

Supplier Level

Code no. 3112

Parameter	Designation	Unit	max	min	Preset	Ind.
240	in1 Auswahl der Eingangs-Funktionen an Buchse ST2/7 für Eingang 1 0 = No function 1 = Needle up/down 2 = Needle up 3 = Single stitch (basting stitch) 4 = Full stitch 5 = Needle to position 2 6 = Machine run blockage effective with open contact 7 = Machine run blockage effective with closed contact 8 = Machine run blockage unpositioned effective with open contact 9 = Machine run blockage unpositioned effective with closed contact 10 = Automatic speed n12 without pedal (N.O. contact) 11 = Limited speed n12 pedal controlled 12 = Sewing foot lifting with pedal in position 0 (neutral) 15 = Tape cutter / fast scissors, function only in chainstitch and overlock mode 18 = Unlocking the chain, can be activated by keystroke, but will be executed only at the seam end 23 = No function 24 = Needle to position 2 (see instruction manual) 27 = Unlocking the chain, function is performed upon pressing the key 28 = External light barrier (according to setting of parameter 131) 33 = Speed n9 pedal controlled 34 = Automatic speed n9 can be suspended by pressing the pedal to pos. 0 (neutral) 37 = Speed n12 pedal controlled (break contact) 38 = Automatic speed n12 without pedal (break contact [N.C.]) 41 = Tape cutting only at machine standstill		41	0	0	
241	in2 Selection of input function on socket ST2/11 for input 2 0 = No function All other functions of the keys as with parameter 240		41	0	0	
242	in3 Selection of input function on socket ST2/6 for input 3 0 = No function All other functions of the keys as with parameter 240		41	0	0	
243	in4 Selection of input function on socket ST2/8 for input 4 1 = No function All other functions of the keys as with parameter 240		41	0	0	
244	in5 Selection of input function on socket ST2/5 for input 5 5 = No function All other functions of the keys as with parameter 240		41	0	0	
245	in6 Selection of input function on socket ST2/12 for input 6 6 = No function All other functions of the keys as with parameter 240		41	0	0	
246	in7 Selection of input function on socket ST2/9 for input 7 7 = No function All other functions of the keys as with parameter 240		41	0	0	

Supplier Level

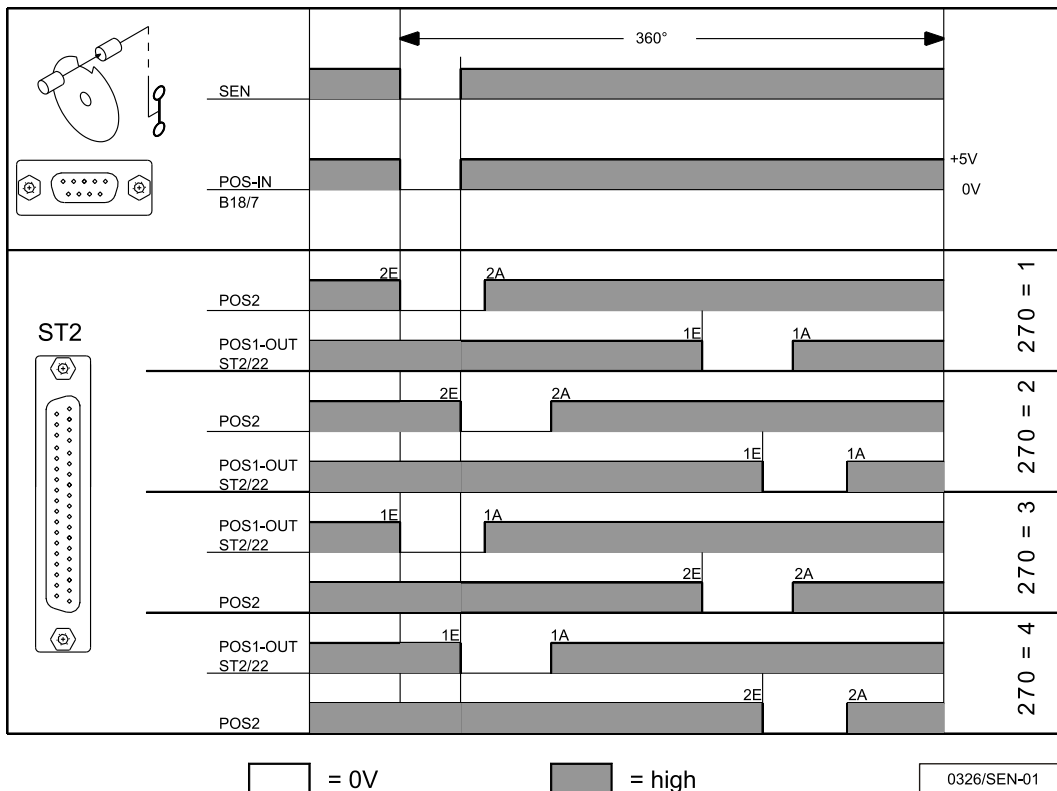
Code no. 3112

Parameter	Designation	Unit	max	min	Preset	Ind.
250	iFA Thread trimmer activation angle	Grad	359	0	180	
251	FSA Switch-off delay of thread tension release	ms	990	0	50	
252	FSE Switch-on delay angle of thread tension release	Grad	359	0	0	
253	tFA Stop time for thread trimmer	ms	500	0	70	
254	EF- Upper limit (pa. 204) duty ratio for sewing foot lifting 1...100	%	100	1	100	
259	FAE Switch-on delay angle of the thread trimmer	Grad	359	0	0	
267	Abc Overlock mode: Start count cancellation and seam end initiation by light barrier uncovered		1	0	0	
269	PSv Positioning shift	incr.	100	0	15	

Supplier Level

Code no. 3112

Parameter	Designation	Unit	max	min	Preset	Ind.
270 PGM	Modus of a position sensor with normally open function (N.O.)		6	0	0	
	<p>0 = The positions are generated using the transmitter incorporated in the motor and can be set using parameter 171 *).</p> <p>1 = Setting the sensor to position 2. Set position 1 using parameter 171 *), starting from trailing edge position 2.</p> <p>2 = Setting the sensor to position 2. Set position 1 using parameter 171 *), starting from leading edge position 2.</p> <p>3 = Setting the sensor to position 1. Set position 2 using parameter 171 *), starting from trailing edge position 1.</p> <p>4 = Setting the sensor to position 1. Set position 2 using parameter 171 *), starting from leading edge position 1.</p> <p>5 = No position sensor available. The drive stops unpositioned. The thread trimmer function is suppressed with this setting.</p> <p>6 = The positions are determined by preset values. The reference position must be correctly set for this purpose. In machines with position sensors incorporated in the handwheel the reference position is determined by mechanical adjustment. In all other cases the reference position must be set (see chapter "Setting the Reference Position") in order for the angles preset by machine select for positions 1 and 2 to be correct. If necessary, the preset values can be adapted as described in chapters "Setting the Positions".</p>					

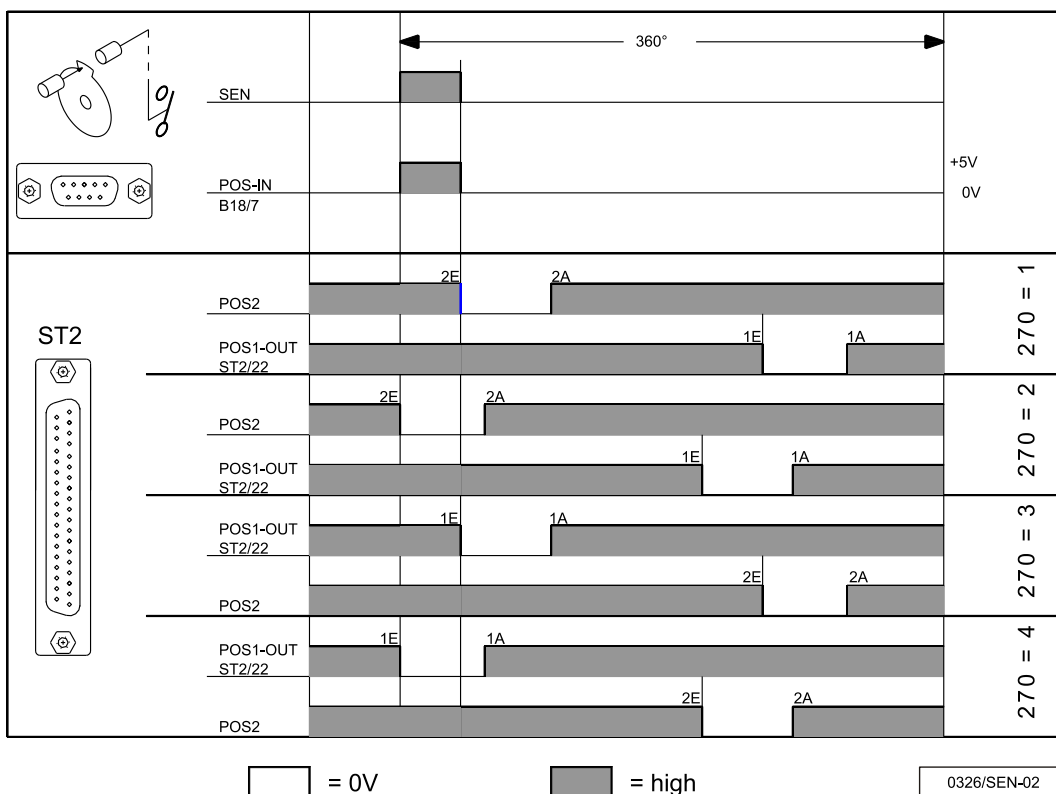


The angles between positions 1 and 2, incoming and outgoing, can be configured using Parameter 171.
*) Alternatively, the positions can be configured using the fast-installation routine.

Supplier Level

Code no. 3112

Parameter	Designation	Unit	max	min	Preset	Ind.
270 PGM	<p>Modus of a position sensor with normally closed function (N.C.)</p> <p>0 = The positions are generated using the transmitter incorporated in the motor and can be set using parameter 171 *).</p> <p>1 = Setting the sensor to position 2. Set position 1 using parameter 171 *), starting from trailing edge position 2.</p> <p>2 = Setting the sensor to position 2. Set position 1 using parameter 171 *), starting from leading edge position 2.</p> <p>3 = Setting the sensor to position 1. Set position 2 using parameter 171 *), starting from trailing edge position 1.</p> <p>4 = Setting the sensor to position 1. Set position 2 using parameter 171 *), starting from leading edge position 1.</p> <p>5 = No position sensor available. The drive stops unpositioned. The thread trimmer function is suppressed with this setting.</p> <p>6 = The positions are determined by preset values. The reference position must be correctly set for this purpose. In machines with position sensors incorporated in the handwheel the reference position is determined by mechanical adjustment. In all other cases the reference position must be set (see chapter "Setting the Reference Position") in order for the angles preset by machine select for positions 1 and 2 to be correct. If necessary, the preset values can be adapted as described in chapters "Setting the Positions".</p>		6	0	0	



The angles between positions 1 and 2, incoming and outgoing, can be configured using Parameter 171.
*) Alternatively, the positions can be configured using the fast-installation routine.

Parameter	Designation	Unit	max	min	Preset	Ind.
272 trr	<p>Transmission ratio between motor shaft and machine shaft (calculation formula see instruction manual!)</p> <p>The transmission ratio should be determined and indicated as precisely as possible!</p>		9999	150	1000	

Supplier Level

Code no. 3112

Parameter	Designation	Unit	max	min	Preset	Ind.
280	kd1	Delay time output M1	ms	5000	0	0
281	kt1	ON period output M1	ms	5000	0	100
282	kd2	Delay time output M2	ms	5000	0	100
283	kt2	ON period output M2	ms	5000	0	100
284	kd3	Delay time output M3	ms	5000	0	200
285	kt3	ON period output M3	ms	5000	0	100
286	kd4	Delay time output M4	ms	5000	0	300
287	kt4	ON period output M4	ms	5000	0	100
288	kdF	Delay time until sewing foot On	ms	5000	0	380
290	FAM	Auswahl des maschinenspezifischen Modus 0 = Lockstitch : (FA1, FA2, FA3, FA1+FA2): e. g. Brother, Dürkopp Adler, Mitsubishi, Pfaff, Toyota 2 = Lockstitch : e. g. Singer (212 UTT) 3 = Lockstitch : e. g. Dürkopp Adler (models 767, N291) 5 = Chainstitch in general: M1, M2, M3 and M4 parallel sequence 6 = Chainstitch with tape cutter and/or fast scissors and M1 / M2 at the seam end 7 = Overlock 8 = Backlatch : Pegasus 9 = Backlatch : Yamato 14 = Lockstitch : Juki (5550-6, 5550-7) Other modes are selectable, but their functions correspond to mode 0!		14	0	5
328	ob	Functional change-over of the keys of the control panel 0 = All keys closed 5 = All keys released, key + works on thread trimmer and/or thread wiper (out of mode 7) 6 = All keys released, key + works on tape cutter (only in mode7)		6	0	5
340	1L	Lower switching threshold of input IN1	%	100	0	30
341	1L	Upper switching threshold of input IN1	%	100	0	80
342	2L	Lower switching threshold of input IN2	%	100	0	30
343	2h	Upper switching threshold of input IN2	%	100	0	80
344	3L	Lower switching threshold of input IN3	%	100	0	30
345	3h	Upper switching threshold of input IN3	%	100	0	80
346	4L	Lower switching threshold of input IN4	%	100	0	30
347	4h	Upper switching threshold of input IN4	%	100	0	80
348	5L	Lower switching threshold of input IN5	%	100	0	30
349	5h	Upper switching threshold of input IN5	%	100	0	80
350	6L	Lower switching threshold of input IN6	%	100	0	30
351	6h	Upper switching threshold of input IN6	%	100	0	80
352	7L	Lower switching threshold of input IN7	%	100	0	30
353	7h	Upper switching threshold of input IN7	%	100	0	80
360	11L	Lower switching threshold of input LSM	%	100	0	50
361	11h	Upper switching threshold of input LSM	%	100	0	70
362	15V	Switch +5V/+15V on B18 0 = +5V 1 = +15V		1	0	0
401	EEP	Immediate storage of all changed data - Input code number 3112 after power On - Press the E key - Input parameter 401 - Press the E key - Set display from 0 to 1 - Press the E or P key - All data are stored		1	0	0

Supplier Level

Code no. 3112

Parameter	Designation	Unit	max	min	Preset	Ind.
467	MOT Selection of motor 1 = DC1500 2 = DC1550		2	1	1	
500	Sir Recall of Fast Installation Routine (SIR) (see chapter "Fast Installation Routine (SIR)")					
510	Transfer parameter settings from control to Memory Stick					
511	Transfer parameter settings from Memory Stick to control					
512	Compare control and Memory Stick parameter settings					
513	Delete parameter setting file from Memory Stick					
526	Transfer control software from control to Memory Stick					
527	Transfer control software from Memory Stick to control					
528	Compare control and Memory Stick control software					
529	Delete control software file from Memory Stick					
550	in12 Selection of input function on socket B22/3 for input 12 0 = No function All other functions of the keys as with parameter 240		41	0	0	
551	in13 Selection of input function on socket B22/4 for input 13 0 = No function All other functions of the keys as with parameter 240		41	0	0	
552	12L Untere Schaltschwelle Eingang IN12	%	100	0	30	
553	12h Obere Schaltschwelle Eingang IN12	%	100	0	80	
554	13L Untere Schaltschwelle Eingang IN13	%	100	0	30	
555	13h Obere Schaltschwelle Eingang IN13	%	100	0	80	

12 Error Displays

On the control	Signification
General Information	
A1	Pedal not in neutral position when turning the machine on
A2	Machine run blockage
A3	Reference position is not set
A9	No thread trimming mode available in parameter 290
A11	The maximum speed configured cannot be reached at this transmission ratio
A500	Max. number of files (99) on Memory Stick exceeded
A501	File not found on Memory Stick
A503	Data on Memory Stick and in the control is not equal
Operating Hours Counter	
C1	Operating hours counter has reached or exceeded the service time
C2	Fatal exception error
C3	Program error
Programming Functions and Values (Parameters)	
Springt zurück auf 0000 bzw. auf letzte Parameter- Nummer	Wrong code or parameter number input

Serious Condition	
E1	The external pulse encoder e.g. IPG... is defective or not connected.
E2	Line voltage too low, or time between power Off and power On too short
E3	Machine blocked or does not reach the desired speed. Wrong motor selected (param. 467)
E4	Control disturbed by deficient grounding or loose contact
E7	24 V power supply overload
E8	Too much data for the EEPROM or flash memory
E9	EEPROM or flash memory defective.
E10	Short-circuit on output (output FL, VR, M1, M2, M3, M4 or M10)
E11	Thermal overload of output stage transistor
E12	Short-circuit on output M5
E13	Thread trimmer does not reach the end position
E14	Power voltage too high: The power voltage is greater than 290 V eff. (The DC motor cannot be started; if running, the motor is stopped without positioning. The motor is passively braked (runs down)!
E15	Internal communications error with intermediate circuit
E16	Power voltage too low: The power feed voltage was less than 120 V eff. (The DC motor cannot be started, and the 24 V is turned off).
E17	Charging PTC too warm. The intermediate circuit could not be charged to the voltage needed. Possible cause: Switching the controller on/off to many times within a short time. Correction: Turn off controller and allow it to cool. (The duration of the cooling off phase depends on the ambient conditions and can take several minutes).
E18	Intermediate circuit voltage greater than 450 V, braking resistance possibly failed
E19	No motor connected, inverter defective, motor phase failed
E20	Motor speed too high
Programming and Data Transfer	
F1	Parameter unavailable; wrong code number
F7	RS232 timeout
F8	RS232, error in data transfer, NAK received
Hardware Disturbance	
H1	Commutation transmitter cord or frequency converter disturbed
H2	Processor disturbed

For your notes:



FRANKL & KIRCHNER GMBH & CO KG
SCHEFFELSTRASSE 73 – 68723 SCHWETZINGEN
TEL.: +49-6202-2020 – FAX: +49-6202-202115
E-Mail: info@efka.net – www.efka.net



OF AMERICA INC.
3715 NORTHCREST ROAD – SUITE 10 – ATLANTA – GEORGIA 30340
PHONE: +1-770-457 7006 – FAX: +1-770-458 3899 – email: efkaus@bellsouth.net



ELECTRONIC MOTORS SINGAPORE PTE. LTD.
67, AYER RAJAH CRESCENT 05-03 – SINGAPORE 139950
PHONE: +65-67772459 – FAX: +65-67771048 – email: efkaems@efka.net