

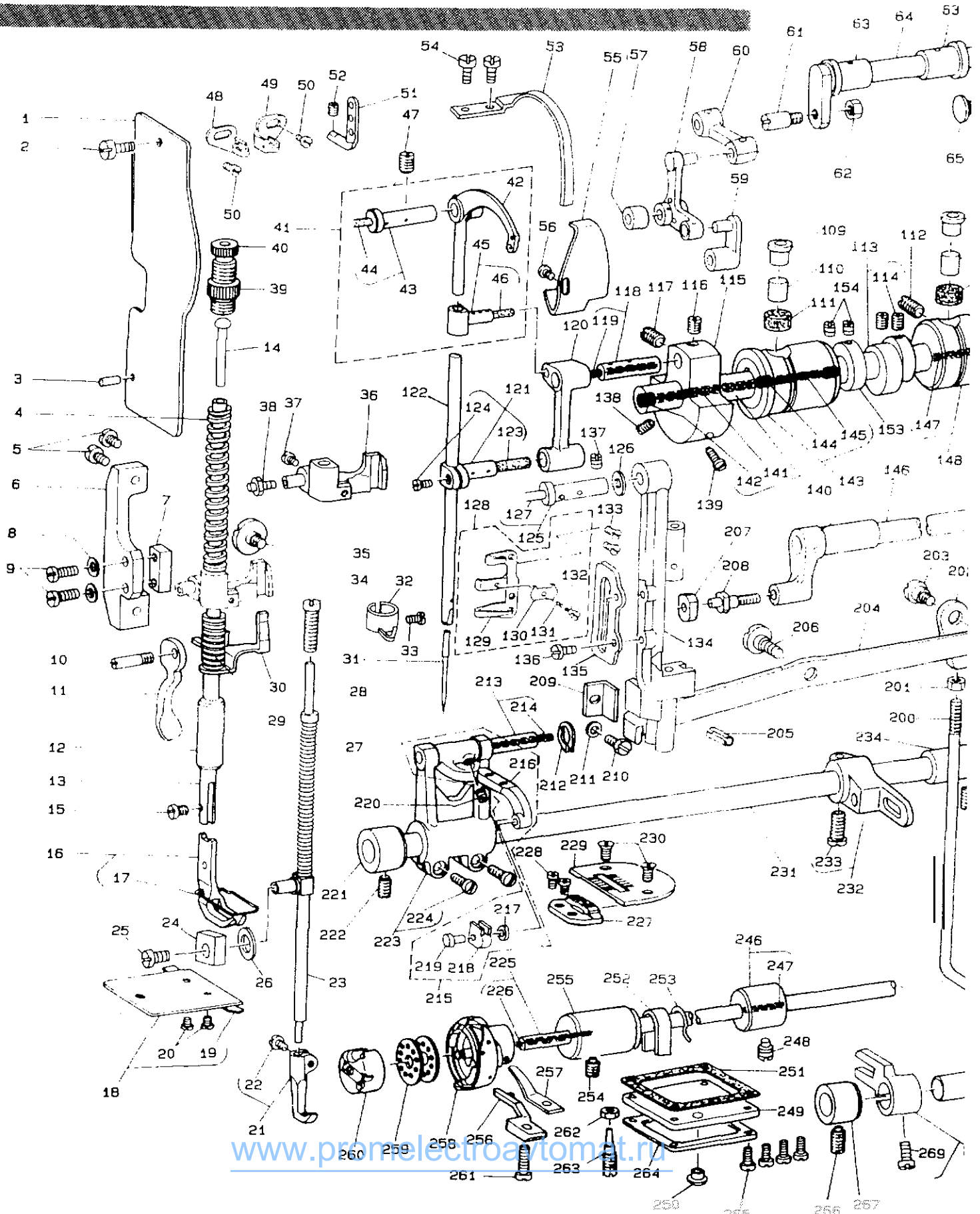
1-Needle,Lockstitch,Compound Walking Foot Needle Feed
Industrial Sewing Machine with a Large Bobbin
一本針本縫総合送りマシン

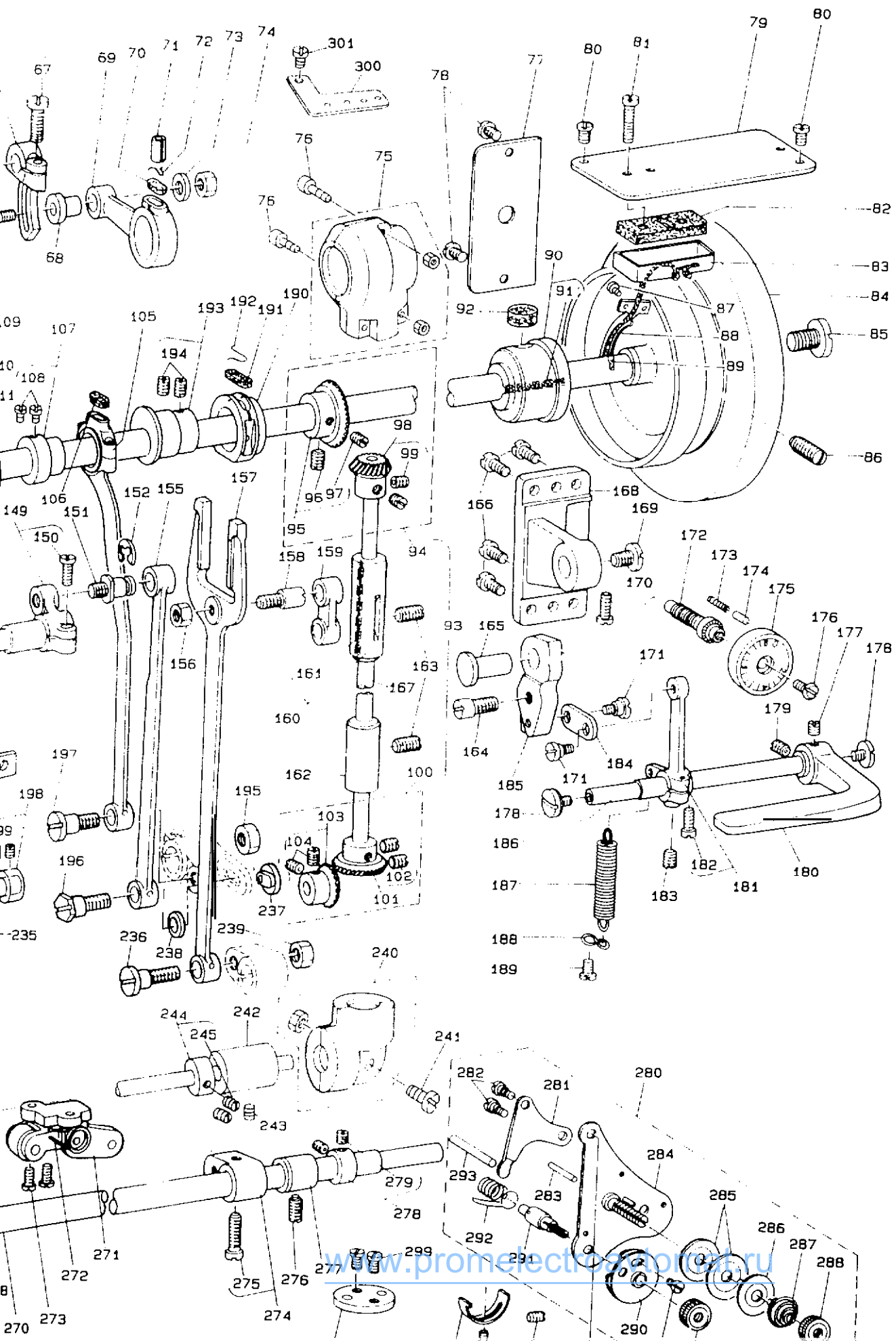
JUKI

DNU-241H

PARTS LIST

BE241H20PJA
No.0146-02





REF. NO	NOTE	PART NO.	DESCRIPTION	QTY
1		B1121-241-H00	FACE PLATE	1
2		SS-709010-SP	SCREW 9/64-40 L=6	1
3		B1107-051-000	FACE PLATE PIN	1
4		B1509-227-000-A	PRESSER SPRING	1
5		SS-7621040-SP	SCREW 3/16-32 L=3.5	1
6		B1464-241-H00	PRESSER BAR BRACKET	1
7		D1463-241-F00	PRESSER BAR BRACKET GUIDE	1
8		WP-0501016-SD	WASHER 5X10.5X1	1
9		SS-6621410-SP	SCREW 3/16-32 L=14	1
10		B1515-051-000	HAND LIFTER PIN	1
11		B1512-141-000	HAND LIFTER	1
12		B1502-541-000	PRESSER BAR BUSHING, LOWER	1
13		B1501-551-000	PRESSER BAR	1
14		B1510-227-000	PRESSER GUIDE BAR	1
15		SS-6009910-TP	SCREW 9/64-40 L=9	1
16		B1528-241-H50	PRESSER FOOT ASM.	1
17		103-07905	FINGER GUARD	(1)
18		B1112-241-HA0	RED SLIDE ASM.	1
19		A1111-007-000	SLIDE PLATE SPRING	(1)
20		SS-6090210-SP	SCREW 3/32-56 L=1.9	(2)
21		B1470-241-HA0	WALKING FOOT ASM.	1
22		B1471-241-H00	SCREW	(1)
23		B1506-563-000	WALKING BAR	1
24		B1414-555-000	SLIDE BLOCK	1
25		SS-7110510-SP	SCREW 11/64-40 L=5	1
26		103-08701	FELT	1
27		B1468-053-000	WALKING BAR SPRING	1
28		B1467-053-0A0	WALKING BAR ASM.	1
29		B1462-053-000	THREAD RELEASE SPRING	1
30		B1460-246-0A0	THREAD RELEASE GUIDE ASM.	1
31		MDP-17082300	NEEDLE DPX17 #23	1
32		103-08401	NEEDLE BAR THREAD GUIDE	1
33		SS-7080510-TP	SCREW 1/8-44 L=4.5	1
34		SS-6151220-SP	SCREW 15/64-28 L=11.5	1
35		SD-0800481-SP	HINGE SCREW D=8 H=4.9	1
36		B1460-245-000	PRESSER LIFTING LEVER BASE	1
37		SS-7111310-SP	SCREW 11/64-40 L=12.8	1
38		B1461-245-000	GUIDE SHAFT HINGE SCREW	1
39		B1511-555-000	NUT 1/2-28	1
40		B1509-555-000	PRESSER SPRING REGULATOR	1
41		B1905-241-HA0	THREAD TAKE-UP LEVER ASM.	1
42		B1905-241-H00	THREAD TAKE-UP LEVER	(1)
43		B1906-051-0A0	TAKE-UP LEVER PIN ASM.	(1)
44		CQ-2020000-00	OIL WICK	(0.1)
45		B1907-051-0A0	TAKE-UP LEVER THRUST PIN ASM.	(1)
46		CQ-2020000-00	OIL WICK	(0.1)
47		SS-8151150-SP	SCREW 15/64-28 L=10.5	1
48		B1129-241-H00	FRAME THREAD GUIDE, LEFT	1
49		B1130-241-H00	FRAME THREAD GUIDE, RIGHT	1
50		SS-5090610-SP	SCREW 9/64-40 L=6	2
51		B1128-522-000	THREE HOLE THREAD EYELET	1
52		SS-8110510-SP	SCREW 11/64-40 L=5	1
53		B1158-563-000	THREAD TAKE-UP LEVER COVER	1
54		SS-7150740-SP	SCREW 15/64-28 L=7	2
55		B1140-051-000	TAKE-UP OIL SPLASHER	1
56		SS-3090520-SP	SCREW 9/64-40 L=4.5	1
57		D1462-241-E00	CONNECTING PIN ROLLER	1
58		D1459-241-E00	L SHAPED LINK	1
59		B1465-053-000	WALKING BAR DRIVING LINK	1
60		B1458-241-H00	UPPER FEED CONNECTING LINK	1
61		B1457-055-000	SCREW STUD	1
62		NS-6660430-SP	NUT 1/4-40	1
63		B1455-053-000	BUSHING	2
64		B1456-053-000	UPPER FEED DRIVING SHAFT	1
65		D1456-055-B00	HINGE SCREW	1
66		D1454-055-B00	UPPER FEED SPRING ROD ASM.	1
67		SS-9161610-SP	SCREW 1/4-24 L=16	1
68		D1455-055-B00	CONNECTING STUD	1
69		D1453-055-B00	UPPER FEED DRIVING ROD	1
70		B1702-012-000	OIL FELT	1
71		PS-0600122-KH	SPRING PIN 6X12	1
72		B1213-012-000	FELT RETAINER	1
73		WP-0482086-SD	WASHER 4.8X11.5X2	1
74		NS-6110530-SP	NUT 11/64-40	1
75		B1395-271-000	GEAR CASE ASM.	1
76		SH-6031202-TP	SCREW M3X0.5 L=12	2
77		B1118-241-H00	SIDE PLATE	1
78		SS-6121010-SP	SCREW 3/16-28 L=10	2
79		B1150-241-H00	TOP COVER	1
80		SS-7119710-SP	SCREW 11/64-40 L=7	2
81		SS-7111810-SP	SCREW 11/64-40 L=18	1
82		B8218-241-H00	OIL PAD	1
83		B8217-241-H00	OIL RESERVOIR	1
84		B1227-141-H00-A	HAND WHEEL	1
85		SS-7701010-SP	SCREW 5/16-24 L=10	1
86		SS-8151550-SP	SCREW 15/64-28 L=15	1
87		SS-7040510-TP	SCREW 1/8-44 L=4.5	1
88		B3502-115-000	OIL WICK RETAINER	1
89		CQ-2020000-00	OIL WICK	(0.1)
90		B1204-241-HA0	BUSHING ASM., REAR	1
91		CQ-2520000-00	OIL WICK	(0.1)
92		B1203-051-000	OIL FELT	1
93		B1305-241-H00	GEAR & PINION ASM.	1
94		B1305-241-HR0	GEAR ASM.	(1)
95		B1305-241-HA0	GEAR ASM.	(1)
96		SS-8660810-TP	SCREW 1/4-40 L=8	(1)
97		SS-8660610-TP	SCREW 1/4-40 L=6	(1)
98		B1306-155-0A0	PINION ASM.	(1)
99		SS-8660810-TP	SCREW 1/4-40 L=8	(2)
100		B1307-155-0B0	GEAR & PINION ASM., LOWER	(1)
101		B1307-155-0A0	GEAR ASM., LARGE	(1)
102		SS-8660810-TP	SCREW 1/4-40 L=8	2
103		B1308-155-0A0	PINION ASM.	(1)
104		SS-8660810-TP	SCREW 1/4-40 L=8	2
105		B1708-241-H00	CRANK CONNECTING ROD	1
106		B1702-012-000	OIL FELT	1

REF. NO	NOTE	PART NO.	DESCRIPTION
111		B1203-051-000	OIL FELT
112		SS-8151550-SP	SCREW 15/64-28 L=15
113		D1450-055-B00	TOP FEED CAM ASM.
114		SS-8660610-TP	SCREW 1/4-40 L=6
115		B1205-051-000	COUNTERWEIGHT
116		SS-8660540-SP	SCREW 9/32-28 L=4.5
117		SS-8660730-SP	SCREW 9/32-28 L=7
118		B1210-051-0A0	NEEDLE BAR CRANK PIN AS
119		CQ-5050000-00	OIL WICK
120		B1408-051-000	NEEDLE BAR CRANK AS
121		B1431-053-030	NEEDLE BAR CONNECTION
122		B1401-053-000	NEEDLE BAR
123		B1412-051-000	FELT
124		SS-7090910-SP	SCREW 9/64-40 L=3.5
125		B1905-051-0A0	TAKE-UP LEVER PIN ASM.
126		B1208-019-000	WASHER
127		CQ-2020000-00	OIL WICK
128		B1130-521-0A0	THREAD GUIDE ASM., LOW
129		B1130-521-000	THREAD GUIDE
130		B1131-521-000	THREAD PRESSER PLATE
131		B1122-521-000	THREAD PRESSER PLATE SF
132		SO-0380551-SL	HINGE SCREW D=3.80 H=
133		SS-2090710-SP	SCREW 9/64-40 L=7
134		B1420-563-000	NEEDLE BAR FRAME
135		B1487-503-000	UPPER FEED BAR GUIDE
136		SS-7110910-SP	SCREW
137		SS-8151150-SP	SCREW 15/64-28 L=10.5
138		SS-8681050-TP	SCREW 9/32-28 L=10
139		SS-7681750-TP	SCREW 9/32-28 L=16.5
140		B1201-241-HA0-A	MAIN SHAFT ASM.
141		CQ-3030000-00	OIL WICK
142		TA-0500601-M0	PLUG D=5X5.4 L=6
143		B1202-241-HA0	MAIN SHAFT BUSHING, FRO
144		B1230-051-000	LEATHER PLUG
145		CQ-2520000-00	OIL WICK
146		B1429-241-HR0	NEEDLE BAR FRAME LOCK
147		B1203-241-HA0	BUSHING ASM., INTERCK
148		CQ-2520000-00	OIL WICK
149		B1431-241-HA0	ROCK SHAFT REAR CRANK
150		SS-7151210-SP	SCREW 15/64-28 L=12
151		B1424-158-000	HINGE SCREW
152		RS-0700000-K0	SNAP RING 7
153		CS-1271012-SH	THRUST COLLAR D=12.7 W
154		SS-8660610-TP	SCREW 1/4-40 L=6
155		B1434-241-H00	DRIVING ROD
156		NS-6680410-SP	NUT 9/32-28
157		B1614-241-H00	PITMAN
158		B1617-241-H00	HINGE SCREW, A
159		B1619-241-H00	FEED CONNECTING LINK
160		B1302-241-HA0	RUSHING ASM., UPPER
161		CQ-2520000-00	OIL WICK
162		B1303-271-000	BUSHING, LOWER
163		SS-8151550-SP	SCREW 15/64-28 L=15
164		B1617-241-H00	HINGE SCREW, A
165		B1622-241-H00	HINGE PIN
166		SS-7151210-SP	SCREW 15/64-28 L=12
167		B1301-241-H00	UPRIGHT SHAFT
168		B1650-241-H00	FEED REGULATOR SUPPORT
169		SS-7151330-SP	SCREW 15/64-28 L=13.0
170		SS-6151220-SP	SCREW 15/64-28 L=11.5
171		SD-0640231-SP	HINGE SCREW D=6.35 H=
172		B1635-241-H00	STITCH LENGTH REGULATI
173		B1148-555-000	SPRING
174		B1147-555-000	PIN
175		B1623-241-E00-A	STICH DIAL ASM.
176		SS-6121050-SP	SCREW 3/16-28 L=9.0
177		SS-8661040-TP	SCREW 1/4-40 L=10
178		SS-7020750-SP	SCREW 3/16-32 L=6.5
179		SS-8660810-TP	SCREW 1/4-40 L=8
180		B1624-586-000	REVERSE FEED CONTROL L
181		B1627-241-HA0	CONTROL LEVER CRANK AS
182		SS-6121210-SP	SCREW 3/16-28 L=12
183		SS-6150710-SP	SCREW 15/64-28 L=7
184		B2115-271-000	NEEDLE THROW LINK
185		D1620-241-E0A	FEED REGULATOR
186		B1621-241-H00	REVERSE FEED CONTROL L
187		B1646-241-H00	TENSION SPRING
188		B1648-122-000	SUSPENSION HOOK (B)
189		SS-7090710-SP	SCREW 9/64-40 L=6.8
190		B1211-220-000	ECCENTRIC RETAINER HOU
191		B1212-612-000	OIL FELT
192		B1213-012-000	FELT RETAINER
193		B1211-141-HA0	FEED DRIVE ECCENTRIC C
194		SS-8150710-SP	SCREW 15/64-28 L=7
195		NS-6680410-SP	NUT 9/32-28
196		SD-1000952-SP	HINGE SCREW D=10 H=9.5
197		SD-1000951-SP	HINGE SCREW D=10 H=9.5
198		CS-1111012-SH	THRUST COLLAR ASM. D=11
199		SS-8660610-TP	SCREW 1/4-40 L=6
200		B3415-141-H00	LIFTING LEVER CONNECT
201		NS-6620210-SP	NUT 3/16-32
202		B2416-141-H00-A	SWIVEL
203		NS-0790351-SP	HINGE SCREW D=7.9 H=3.1
204		B3410-241-H00-A	PRESSER BAR LIFTING LE
205		ES-0002222-KF	SPRING PIN
206		SP-1127321-SP	HINGE SCREW D=12.70 H=
207		B1414-237-000	SQUARE BLOCK
208		B1410-771-000	STUD
209		B1423-051-000	NEEDLE BAR FRAME GUIDE
210		SS-911010-SP	SCREW 11/64-40 L=9.5
211		WP-0480550-SD	WASHER 4.8X8.4X0.8
212		NS-0500711-KP	SNAP RING 5
213		B1904-012-0A0-A	FEED BAR SHAFT ASM.
214		CQ-2020000-00	OIL WICK
215		B1902-241-HA0	FEED BAR ASM.
216		B1602-241-H00	FEED BAR

ITEM	QTY	DESCRIPTION	QTY
7	1	...	1
15	2	...	2
16	1	...	1
17	1	...	1
18	1	...	1
19	1	...	1
20	1	...	1
21	1	...	1
22	1	...	1
23	1	...	1
24	1	...	1
25	1	...	1
26	1	...	1
27	1	...	1
28	1	...	1
29	1	...	1
30	1	...	1
31	1	...	1
32	1	...	1
33	1	...	1
34	1	...	1
35	1	...	1
36	1	...	1
37	1	...	1
38	1	...	1
39	1	...	1
40	1	...	1
41	1	...	1
42	1	...	1
43	1	...	1
44	1	...	1
45	1	...	1
46	1	...	1
47	1	...	1
48	1	...	1
49	1	...	1
50	1	...	1
51	1	...	1
52	1	...	1
53	1	...	1
54	1	...	1
55	1	...	1
56	1	...	1
57	1	...	1
58	1	...	1
59	1	...	1
60	1	...	1
61	1	...	1
62	1	...	1
63	1	...	1
64	1	...	1
65	1	...	1
66	1	...	1
67	1	...	1
68	1	...	1
69	1	...	1
70	1	...	1
71	1	...	1
72	1	...	1
73	1	...	1
74	1	...	1
75	1	...	1
76	1	...	1
77	1	...	1
78	1	...	1
79	1	...	1
80	1	...	1
81	1	...	1
82	1	...	1
83	1	...	1
84	1	...	1
85	1	...	1
86	1	...	1
87	1	...	1
88	1	...	1
89	1	...	1
90	1	...	1
91	1	...	1
92	1	...	1
93	1	...	1
94	1	...	1
95	1	...	1
96	1	...	1
97	1	...	1
98	1	...	1
99	1	...	1
100	1	...	1
101	1	...	1
102	1	...	1
103	1	...	1
104	1	...	1
105	1	...	1
106	1	...	1
107	1	...	1
108	1	...	1
109	1	...	1
110	1	...	1
111	1	...	1
112	1	...	1
113	1	...	1
114	1	...	1
115	1	...	1
116	1	...	1
117	1	...	1
118	1	...	1
119	1	...	1
120	1	...	1
121	1	...	1
122	1	...	1
123	1	...	1
124	1	...	1
125	1	...	1
126	1	...	1
127	1	...	1
128	1	...	1
129	1	...	1
130	1	...	1
131	1	...	1
132	1	...	1
133	1	...	1
134	1	...	1
135	1	...	1
136	1	...	1
137	1	...	1
138	1	...	1
139	1	...	1
140	1	...	1
141	1	...	1
142	1	...	1
143	1	...	1
144	1	...	1
145	1	...	1
146	1	...	1
147	1	...	1
148	1	...	1
149	1	...	1
150	1	...	1

REF. NO.	ROTF	PART NO.	DESCRIPTION	QTY
221		B1604-141-H00	BUSHING, FRONT	1
222		SS-8150710-SP	SCREW 15/64-28 L=7	1
223		B1603-141-HA0	FEED ROCKER ASM.	1
224		SS-7121410-SP	SCREW 3/16-28 L=14	(2)
225		B1201-241-HA0	HQUC DRIVING SHAFT ASM.	1
226		CS-2030060-00	OIL WICK	(0.1)
227		B1613-241-E0R	FEED DOG 4X2.5 WITH DITCH	1
228		SS-4080620-7P	SCREW 1/8-44 L=6	2
229		B1105-241-H00-A	THROAT PLATE	1
230		SS-2110920-TP	SCREW 11/64-40 L=8.5	2
231		B1601-141-H00	FEED ROCK SHAFT	1
232		B1605-241-H00-A	FEED ROCK SHAFT CRANK	1
233		SS-7151610-SP	SCREW 15/64-28 L=16	(1)
234		118-47308	BUSHING, REAR	1
235		SS-8150710-SP	SCREW 15/64-28 L=7	1
236		SP-1000951-SP	HINGE SCREW D=10 H=9.5	1
237		B3009-141-H0B	NUT	1
238		WF-0742016-SF	WASHER	1
239		NS-6680410-SF	NUT 9/32-28	1
240		B1307-271-0A0	PIHLION CASE ASM.	1
241		SM-6051410-SC	SCREW M5X0.8 L=14	1
242		B1806-271-00C	LOWER SHAFT BUSHING, REAR	1
243		SS-8150710-SP	SCREW 15/64-28 L=7	1
244		CS-079101A-SH	THRUST COLLAR ASM. D=7.94 W=10	2
245		SS-8110520-TP	SCREW 11/64-40 L=4.5	(4)
246		B1803-141-HA0	BUSHING ASM., INTERMEDIATE	1
247		CS-2020000-00	OIL WICK	(0.1)
248		SS-8150710-SP	SCREW 15/64-28 L=7	1
249		B1151-141-H00	LUBRICATING OIL PUMP COVER	1
250		TA-0750404-R0	PLUG D=7.5 L=3.5	1
251		B1152-141-H00	GASKET	1
252		B1155-141-H00	OIL PIP	1
253		B1156-141-H00	FELT HOLDER	1
254		SS-8151150-SP	SCREW 15/64-28 L=10.5	1
255		B1802-141-H00-A	DRIVING SHAFT BUSHING, FRONT	1
256		B1835-241-H00	BOBBIN CASE POSITIONING FINGER	1
257		B1829-241-H00	THREAD PRESSER PLATE	1
258		B1830-241-HA0	HOOK ASM.	1
259		B9117-201-000	BOBBIN	1
260		B1837-241-H00	BOBBIN CASE	1
261		SS-6111620-SP	SCREW 11/64-40 L=16.0	1
262		NS-6110530-SP	NUT 11/64-40	1
263		B1834-512-000-A	OIL ADJUSTING SCREW	1
264		B1154-141-H00	OIL PUMP COVER	1
265		SS-6111210-SP	SCREW 11/64-40 L=12	4
266		SS-8150710-SP	SCREW 15/64-28 L=7	1
267		B1604-141-H00	BUSHING, FRONT	1
268		D1704-241-E00	UP AND DOWN FEED FORKED	1
269		SS-7111120-SP	SCREW 11/64-40 L=10.5	(1)
270		B1601-141-H00	FEED ROCK SHAFT	1
271		B3402-141-HA0-A	BELL CRANK BRACKET ASM.	1
272		B3406-141-H00	SPRING	1
273		SS-7120910-SF	SCREW 3/16-28 L=9	2
274		B1703-241-HA0	DRIVING SHAFT CRANK ASM., REAR	1
275		SS-6151820-SP	SCREW 15/64-28 L=19.0	(1)
276		SS-8151550-SP	SCREW 15/64-28 L=15	1
277		118-47308	BUSHING, REAR	1
278		CS-1111010-SH	THRUST COLLAR ASM. D=11.11 W=10	1
279		SS-8660810-TP	SCREW 1/4-40 L=6	(2)
280		B3121-241-HA0	TENSION RELEASE LEVER ASM.	1
281		B3134-051-000	TENSION RELEASE LEVER	(1)
282		SD-0470281-SP	HINGE SCREW D=4.7 H=2.8	(2)
283		B3127-051-000	TENSION RELEASE PIN, SHORT	(1)
284		B3124-241-HA0	TENSION STUD ASM.	(1)
285		B3126-051-000	TENSION DISC	(2)
286		B3132-051-000	TENSION DISC HOLDER	(1)
287		B3129-526-000	TENSION SPRING (1.2)	(1)
288		B3125-012-000	THREAD TENSION NUT	(2)
289		SS-4080610-SP	SCREW 1/8-44 L=6.4	(1)
290		B3137-051-0A0	TAKE-UP SPRING GUIDE DISC ASM.	(1)
291		B3123-051-000	TAKE-UP SPRING STUB	(1)
292		B3128-051-000	THREAD TAKE-UP SPRING, A	(1)
293		B3122-053-000	TENSION RELEASE BAR	(1)
294		SS-7110720-SP	SCREW 11/64-40 L=7	1
295		SS-8111251-SP	SCREW 11/64-40 L=12.0	1
296		B3138-512-000	TAKE-UP SPRING ADJUSTING PLATE	1
297		SS-7090520-SF	SCREW 9/64-40 L=4.5	1
298		B1103-141-H00	SCALE BASE PLATE	1
299		SS-7110720-SP	SCREW 11/64-40 L=7	2
300		196-61697	TENSION THREAD LEARD PLATE	1
301		SS-4120815-SP	SCREW 3/16-28 L=6	1

Ed Raichert, Inc
Industrial Sewing Equipment
3517 N 42nd Ave Phoenix, Arizona 85019
ph: 602-272-2301 ph 800-422-3153 www.raichert.com
fax 602-272-0509 email les@raichert.com

JUKI CORPORATION
INTERNATIONAL SALES DIVISION
8-2-1, KOKURYO-CHO,
CHOFU-SHI, TOKYO 182, JAPAN
PHONE: 03 (3430) 4001-S
FAX: 03 (3430) 4903, 4909, 4914
TELEX: J22967