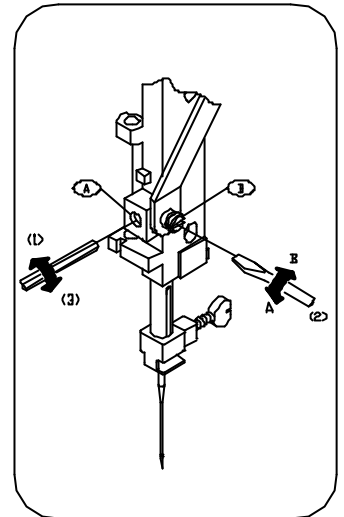
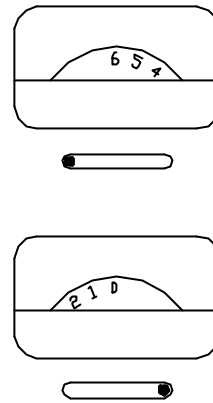


**298 PARTS LIST**

**SEWMASTER INDUSTRIAL CO., LTD.**

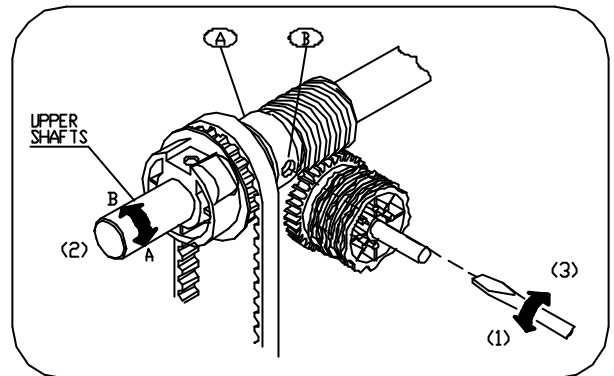
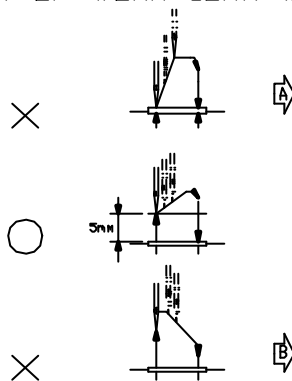
1. TO ADJUST THE NEEDLE POSITION OF STRAIGHT STITCH

- a. LOOSEN SET SCREW (A)
- b. TURNS THE ECCENTRIC (B) TO A OR B SIDE
- c. TIGHTEN SET SCREW FROM (A)



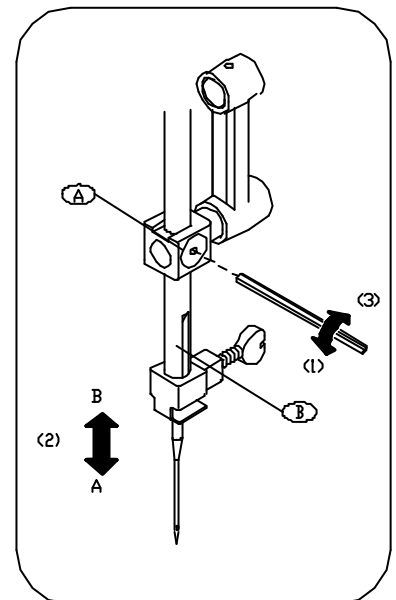
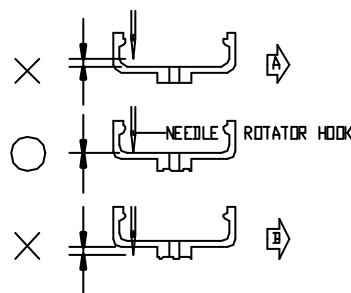
2. TO ADJUST SIDEWISE MOVEMENT OF NEEDLE WHILE IN THE MATERIAL

- a. LOOSEN THE SET SCREW (B) OF WORM GEAR (A)
- b. USE SCREW DRIVER FLEXING THE WORM GEAR (A) THEN TURN THE UPPER SHAFT TO A OR B SIDE
- c. TIGHTEN THE SET SCREW (B) OF WORM GEAR (A)



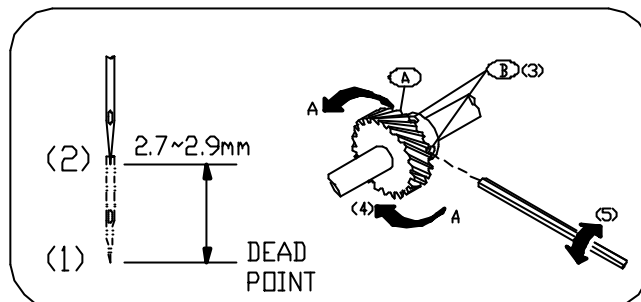
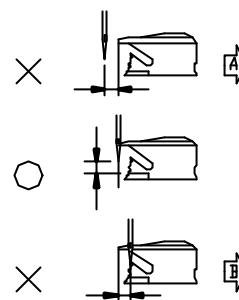
3. TO SET PRESSER BAR AT CORRECT HEIGHT

- a. TURNS THE HAND WHEEL, SET THE NEEDLE ON THE LOWER DEAD POINT, THEN LOOSEN SET SCREW (A)
- b. TURNS THE NEEDLE BAR (B) TO A OR B SIDE



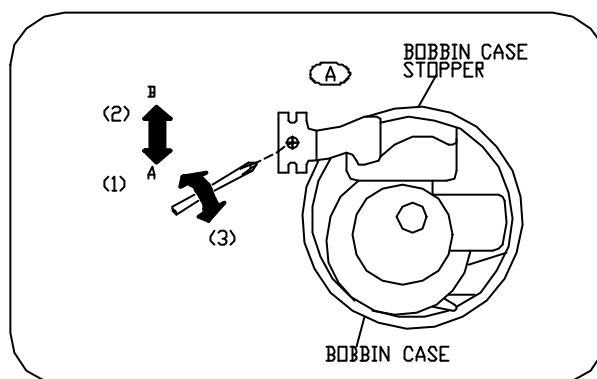
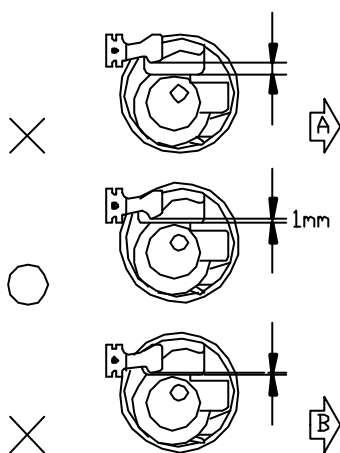
4. TO ADJUST TIPPING OF SCUTTLE HOOK

- SET THE PATTERN SELECTOR DIAL ON STRAIGHT STITCH & NEEDLE ON THE LOWER DEAD POINT
- TURNS THE HAND WHEEL TOWARD YOU UNTIL THE NEEDLE POINT RAISES 2.7mm~2.9mm
- LOOSEN THE LOWER SHAFT CRANK A TO SET SCREW B
- BY TURNS THE LOWER SHAFT (A) TO A OR B SIDE SET TO THE TIP OF THE SHUTTLE HOOK AND NEEDLE CENTER (WIDTH) CROSSES MATCH
- TIGHTEN THE LOWER SHAFT SET SCREW (B)



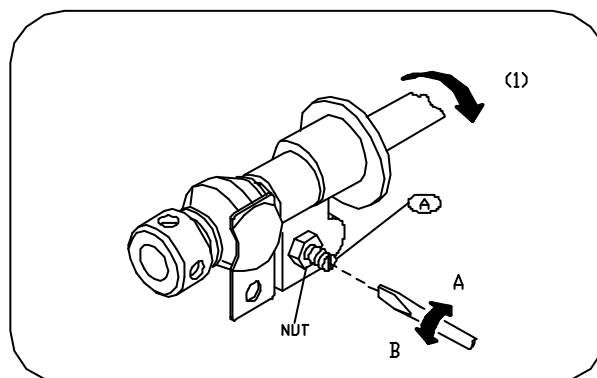
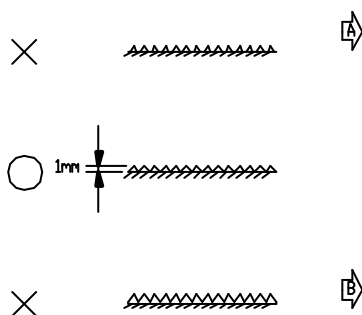
5. TO ADJUST THE POSITION OF BOBBIN CASE STOPPER

- LOOSEN THE SET SCREW (A)
- TURNS THE BOBBIN CASE STOPPER TO A OR B SIDE
- TIGHTEN THE SET SCREW (A)



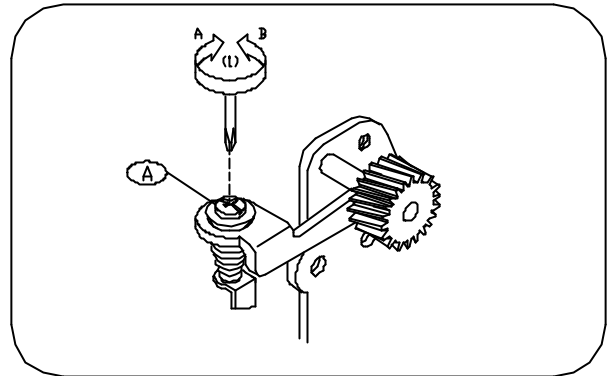
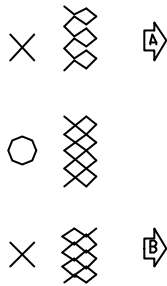
6. TO SET FEED DOG ON CORRECT HEIGHT

- SET THE STITCH LENGTH DIAL ON "4" AND THE FEED DOG ON IT'S HIGHEST POSITION
- TURNS THE ADJUST SCREW (A) TO A OR B SIDE (DON'T EFFECT NUT LOOSEN)



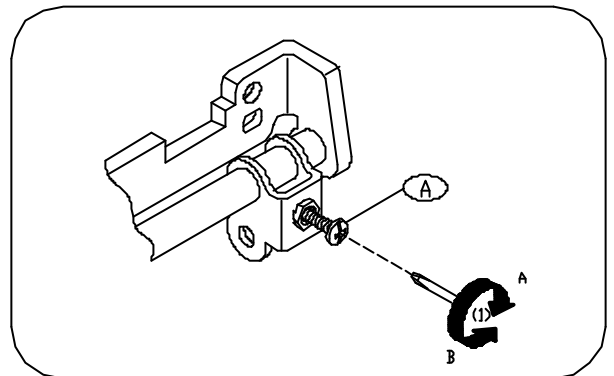
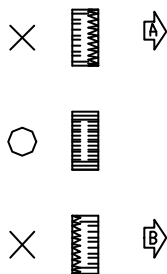
7. TO ADJUST BALANCING OF STRETCH STITCH FEED

- a. TURNS THE ADJUST SCREW (A) TO A OR B SIDE  
(DONT EFFECT NUT LOOSEN)



8. TO ADJUST BAR TACKING IN BUTTONHOLE SEWING

- a. TURNS THE ADJUST SCREW (A) TO A DIED  
(DONT EFFECT NUT LOOSEN)



9. TO SET PRESS FOOT TO CORRECT HEIGHT

- a. LOOSEN SET SCREW (A)  
b. MOVE THE PRESS BAR TO A OR B SIDE  
c. TIGHTEN SET SCREW (A)

