


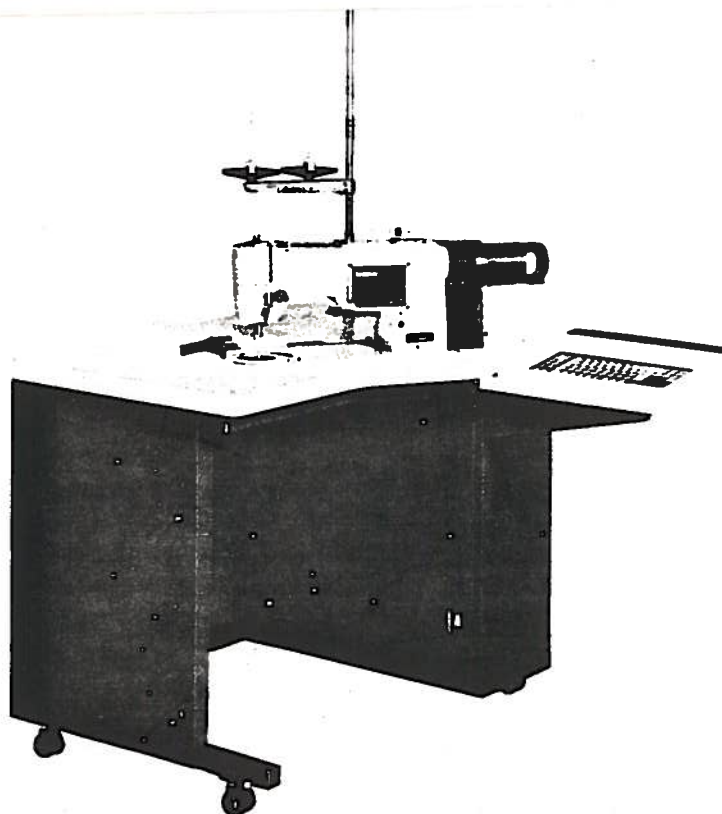


brother

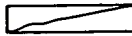
ELECTRONIC MONOGRAMMING MACHINE
ELEKTRONISCHE MONOGRAMMSTICKMASCHINE
MACHINE MONOGRAMME ELECTRONIQUE
MAQUINA ELECTRONICA PARA COSER MONOGRAMAS

BAS400

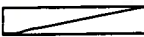
PICK	LOCATION 03WS07-301	QUANTITY 1 EA 0 0 CASES EA
ORDER: 240333	BATCH: 6	
		
PART: 195400102		
	PARTS BOOK (BAS-400)	



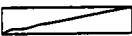
Notes for using this parts book

1. The symbol  in the "Parts No." column indicates that the parts is not available for supply. If, however, there is a number in the "Assembly No." column, the parts can be ordered as an assembly. Please, therefore, order by using the assembly No.
2. This book was prepared based on information available in April, 1984.
3. Parts are subject to changes in design without prior notice.

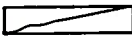
Anmerkungen zum Gebrauch dieses Stücklistebuches

1. Dieses Zeichen  in der Spalte "Teilnummer" bedeutet, daß dieser Teil nicht lieferbar ist. Wenn Jedoch in der Spalte "Gerätesatznummer" eine Nummer steht, kann dieser Teil als ein Geräteteilsatz bestellt werden. Bestellen Sie daher bitte mit dieser Gerätesatznummer.
2. Dieses Buch basiert auf den Informationen vom April 1984.
3. Modelländerungen sind vorbehalten.

Notes sur l'utilisation de ce manuel de pièces détachées

1. Le symbole  dans la colonne "N° de pièce" signifie que la pièce ne peut être fournie. Si, dans la colonne "N° jeu de pcs", il y a un numéro de nomenclature, la pièce peut être commandée comme faisant partie d'un jeu de pièces. Donc, pour toute commande, veuillez spécifier le n° du jeu de pièces.
2. Ce manuel a été fait d'après les renseignements valables au mois Avril, 1984.
3. Les pièces peuvent être sujettes à des modifications sans préavis.

Notas para usar este Libro de Piezas

1. El símbolo , que se encuentra en la columna del "Número de Pieza", quiere decir que no se dispone de dicha pieza sola. Cuando, empero, hay un número en la columna del "Número de Juego", se podrá ordenar la pieza con todo el juego. Por lo tanto, será mejor hacer el pedido recurriendo al número del juego respectivo.
2. Este libro ha sido compilado basándose en los datos de que se disponía en abril de 1984.
3. Las piezas quedan sujetas a cambios de diseño sin aviso previo.

CONTENTS

A. Machine body, Upper threading and tension controller, Thread breakage detector mechanism	1
B. Needle bar and thread take-up, Presser bar mechanism	2
C. Zigzag mechanism	3
D. Rotary hook mechanism	4
E. Lubrication	5
F. Presser foot and feed guide mechanism	6
G. Bobbin winder and motor mechanism	7
H. Power supply equipment mechanism	8
J. Control box, Power table mechanism (1)	9
J. Power table mechanism (2)	10
Z. Accessories	11
OPTIONAL PARTS	12
INDEX	13

INHALTSVERZEICHNIS

A. Maschinengehäuse, Fadenführungsvorrichtung, Fadenspannung, Fadenbruchfühler	1
B. Nadelstangen und Fadenabnahmevorrichtung, Stoffdrückermechanismus	2
C. Zickzackmechanismusvorrichtung ...	3
D. Greifervorrichtung	4
E. Schmierung	5
F. Transportführung und Stoffdrückerfuß	6
G. Spuler und Motor	7
H. Stromversorgung	8
J. Schaltkasten, Motorgestell (1)	9
J. Motorgestell (2)	10
Z. Zubehör	11
SONDERZUBEHÖR	12
VERZEICHNIS	13

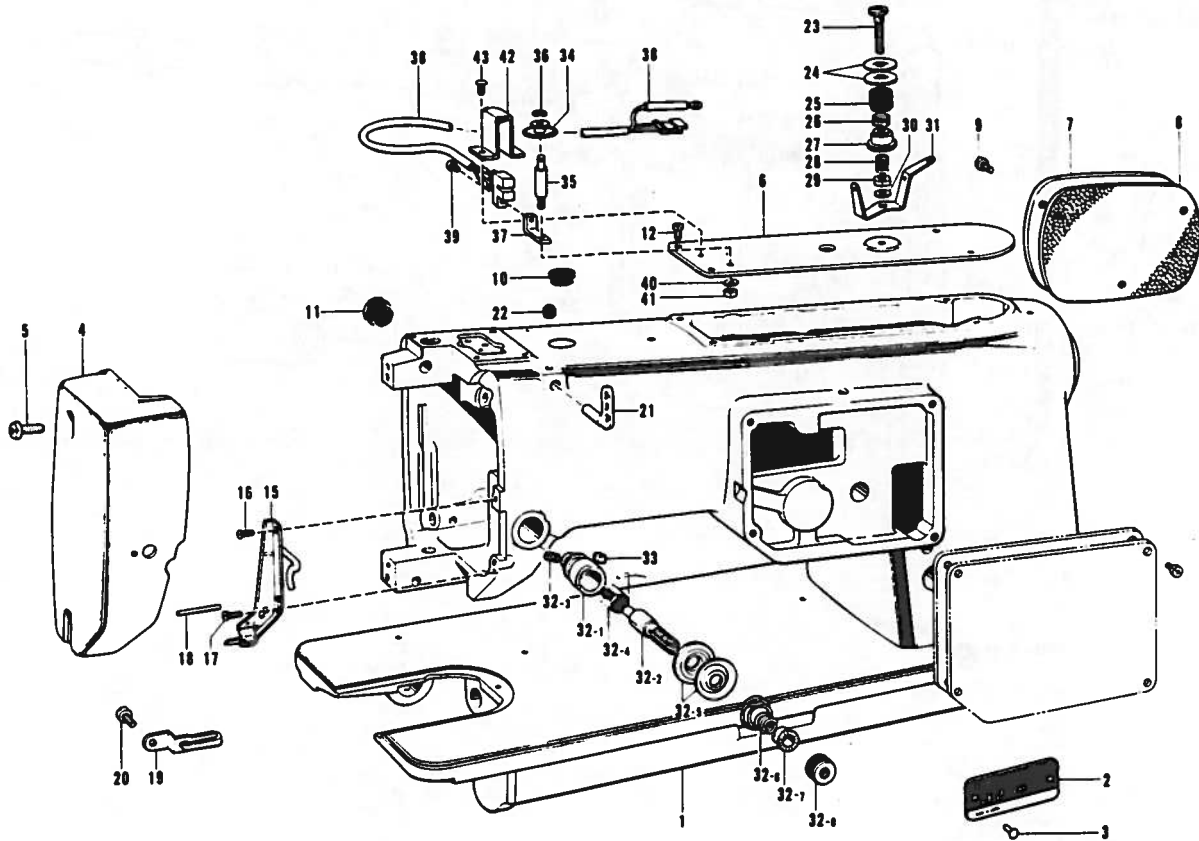
TABLE DES MATIERES

A. Corps de la machine, Mécanisme de l'enfilage, Tension du fil, Mécanisme du détecteur de cassure du fil	1
B. Mécanisme de la barre à aiguille et releveur de fil, Mécanisme de la barre du presseur	2
C. Mécanisme des points zigzag	3
D. Mécanisme du crochet rotatif	4
E. Lubrification	5
F. Mécanisme du guide de l'entraînement, Mécanisme du pied presseur	6
G. Mécanisme du bobineur, Mécanisme du moteur	7
H. Mécanisme de l'équipement en alimentation électrique	8
J. Mécanisme du boîtier de contrôle, Mécanisme du plateau de la machine (1)	9
J. Mécanisme du plateau de la machine (2)	10
Z. Accessoires	11
PIECES EN OPTION	12
INDEX	13

INDICE

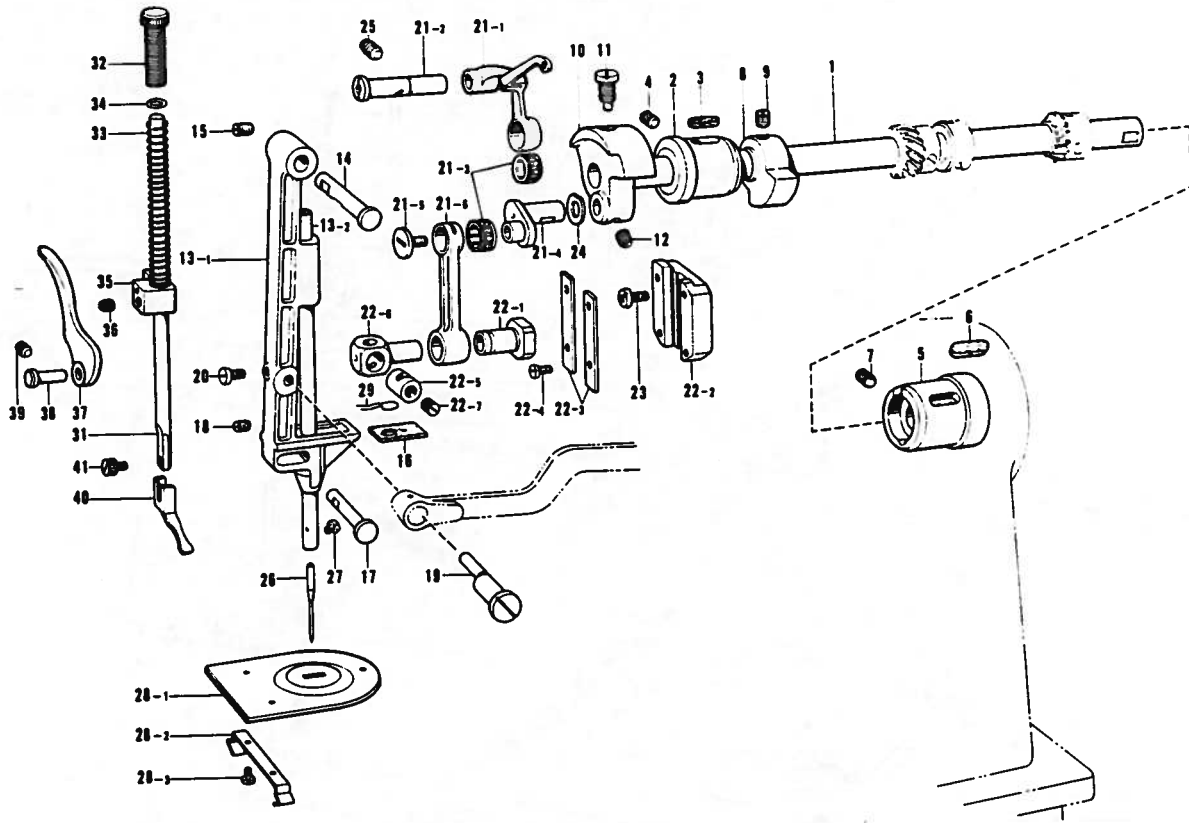
A. Cuerpo de la máquina, Mecanismo de la enhebrado, Tension del hilo, Mecanismo del sensor de cortes en el hilo	1
B. Mecanismo de barra de aguja y tirahilos, Mecanismo de barra prensatelas	2
C. Mecanismo de zigzag	3
D. Mecanismo del cangrejo	4
E. Lubricación	5
F. Mecanismo de la guía de alimentación, Mecanismo de la prensa telas	6
G. Mecanismo del devanador de la canilla, Mecanismo del motor	7
H. Mecanismo de la equipo de alimentación de corriente	8
J. Mecanismo del caja de controles, Mecanismo del mesa de la máquina (1)	9
J. Mecanismo del mesa de la máquina (2)	10
Z. Accesorios	11
PIEZAS OPCION	12
INDICE	13

- A. Machine body. Upper threading and tension controller. Thread breakage detector mechanism
 Maschinengehäuse. Fadenführungsvorrichtung. Fadenspannung. Fadenbruchfühler
 Corps de la machine. Mécanisme de l'enfilage. Tension du fil. Mécanisme du détecteur de cassure du fil
 Cuerpo de la máquina. Mecanismo de la enhebrado. Tension del hilo. Mecanismo del sensor de cortes en el hilo



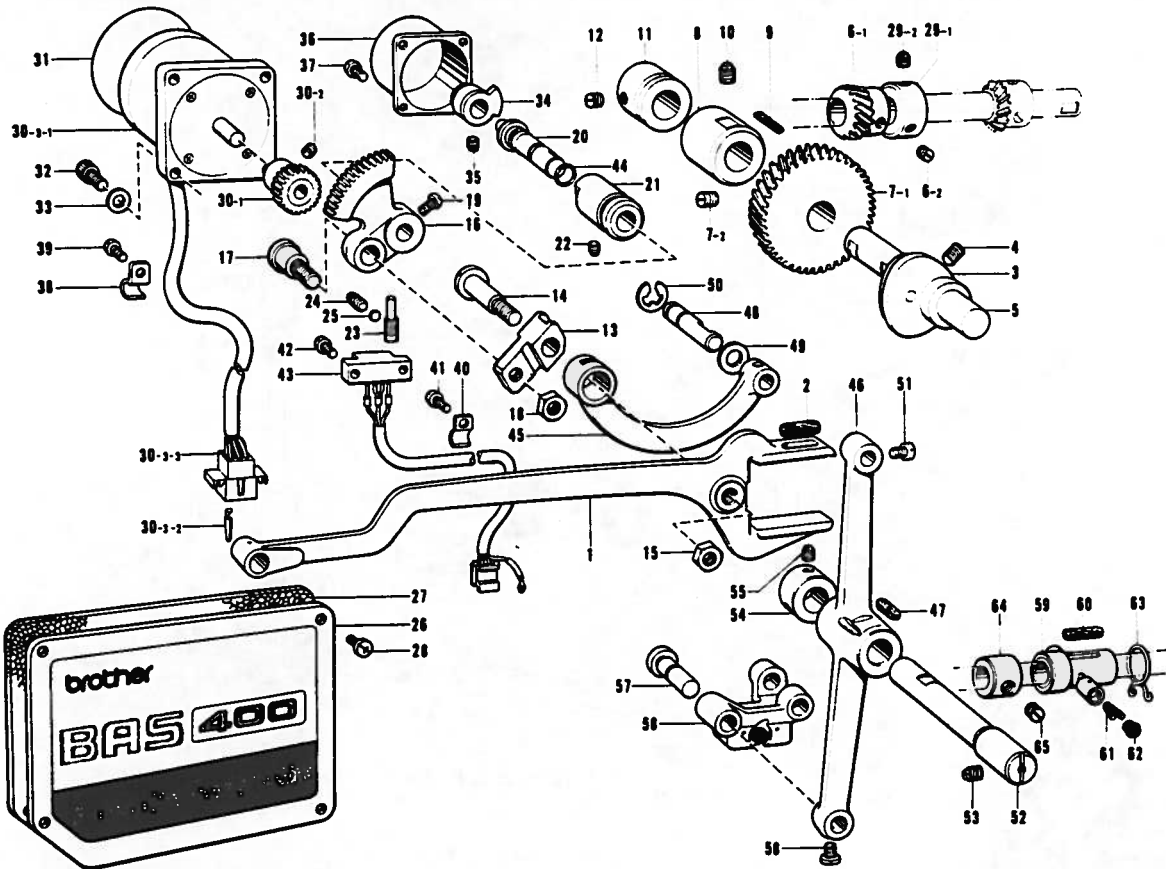
Ref. No.	Name of Parts	Q'ty	Parts No.	Ref. No.	Name of Parts	Q'ty	Parts No.
1	Arm Bed Assembly	1		28	Spring	1	146060-000
2	Model Plate B-860	1		29	Nut 4.37	1	105234-003
3	Pin	2		30	Washer 4.37	1	025680-232
4	Face Plate	1	157131-001	31	Thread Guide Plate	1	146055-001
5	Screw 476-32 x 16	2	060711-612	32	Tension Bracket Assembly	1	157287-001
6	Top Cover	1	157253-001	32-1	Tension Bracket	1	145250-001
7	Rear Cover	1	148919-003	32-2	Tension Stud	1	117632-001
8	Packing	1	116981-000	32-3	Screw 3.57	1	100402-004
9	Screw 357-40 x 6	3	062670-612	32-4	Thread Take-up Spring	1	118197-001
10	Oil Cap	1	111937-001	32-5	Tension Disc	2	145446-001
11	Oil Cap	2	104449-001	32-6	Tension Spring	1	157268-001
12	Screw 357-40 x 6	4	062670-612	32-7	Washer	1	144105-000
15	Thread Handling Area Assembly	1	117637-001	32-8	Nut	1	151012-001
16	Screw 2.38	1	102731-002	33	Screw 5.95	1	103950-003
17	Screw 3.57	1	108960-002	34	Pulley (A)	1	157255-000
18	Pin	1	117640-001	35	Pulley Shaft	1	157262-001
19	Face Plate Thread Guide	1	117636-001	36	Stop Ring E12	1	048020-342
20	Screw 357-40 x 4	1	062670-412	37	Fixed Plate	1	157263-001
21	Thread Retainer	1	114931-002	38	Thread Breakage Sensor Assembly	1	157256-001
22	Screw 4.37	1	151601-002	39	Screw 3 x 5	1	001300-503
23	Tension Bar	1	153111-001	40	Washer 3	1	025030-233
24	Tension Disc	2	144504-001	41	Nut 3	1	021300-103
25	Tension Disc Presser	1	146206-001	42	Cover	1	157264-001
26	Tension Spring	1	146058-001	43	Screw 3 x 6	2	008300-604
27	Nut	1	146059-001				

B. Needle bar and thread take-up. Presser bar mechanism
Nadelstangen und Fadenabnahmevorrichtung. Stoffdrückermechanismus
Mécanisme de la barre à aiguille et releveur de fil. Mécanisme de la barre du presseur
Mecanismo de barra de aguja y tirahilos. Mecanismo de barra prensatelas



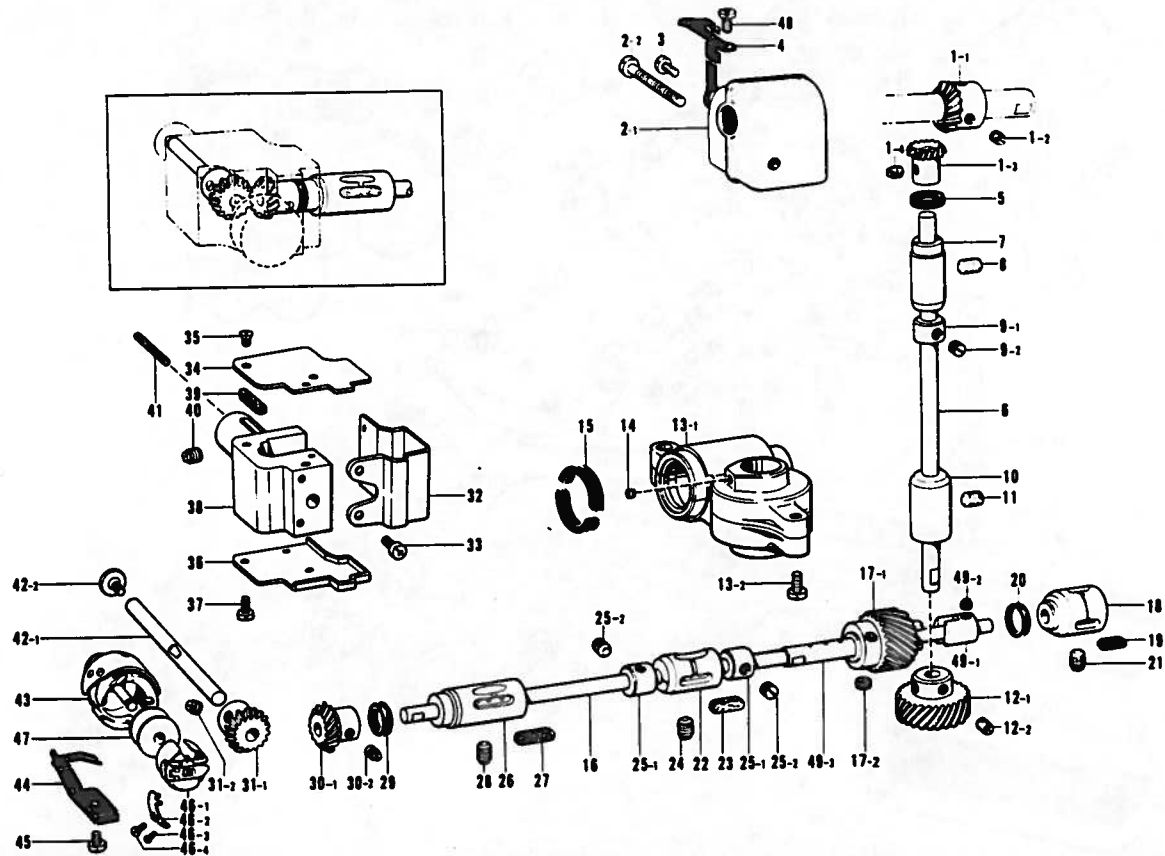
Ref. No.	Name of Parts	Q'ty	Parts No.	Ref. No.	Name of Parts	Q'ty	Parts No.
1	Upper Shaft	1	117535-001	22	Slide Block Guide Assembly	1	118807-101
2	Upper Shaft Bushing Right	1	142013-001	22-1	Slide Block	1	
3	Felt	1	100248-001	22-2	Slide Block Guide	1	
4	Screw 5.95	1	013761-410	22-3	Slide Block Presser Plate	2	147732-001
5	Upper Shaft Bushing Right	1	117938-001	22-4	Screw 3.18	4	100080-003
6	Felt	1	100248-001	22-5	Needle Bar Clamp Shaft	1	117560-001
7	Screw 5.95	1	013760-610	22-6	Needle Bar Clamp	1	
8	Counter Weight	1	117542-000	22-7	Screw 5.56	1	110124-001
9	Screw 6.35	2	013780-810	23	Screw 437-40 x 8	2	060680-812
10	Thread Take-up Crank	1	116949-000	24	Washer	1	110367-001
11	Screw 7.14	1	100250-001	25	Screw 5.95	1	151605-001
12	Screw 6.35	2	100251-001	26	Needle DB x 1	1	100265-031
13	Needle Bar Support Assembly	1	117544-001	27	Screw 3.18	1	140553-102
13-1	Needle Bar Support	1		28	Needle Plate Assembly	1	148309-002
13-2	Needle Bar	1	117546-001	28-1	Needle Plate	1	
14	Pin (U)	1	117939-001	28-2	Spring Plate	1	148310-001
15	Screw 4.76	1	013711-010	28-3	Screw 2.38	2	122771-002
16	Felt (A)	1	117547-001	29	Felt Presser Spring	1	118311-001
17	Pin (D)	1	113031-001	31	Presser Bar	1	103013-000
18	Screw 4.76	1	013711-010	32	Screw	1	100279-101
19	Eccentric Shaft	1	117549-001	33	Presser Spring	1	157065-001
20	Screw 5.95	1	105163-001	34	Washer	1	141099-001
21	Needle Bar Connecting Lever Assembly	1	117550-101	35	Presser Bar Clamp	1	142472-001
21-1	Thread Take-up Supporter Assembly	1		36	Screw 5.95	1	151604-001
21-2	Stud	1		37	Presser Foot Lifter	1	157066-001
21-3	Needle Bearing	2		38	Presser Bar Lifter Shaft	1	124697-001
21-4	Needle Bar Crank	1	140706-001	39	Screw 5.95	1	151604-002
21-5	Screw 3.57L	1	145465-001	40	Presser Foot A	1	157197-001
21-6	Needle Bar Crank Rod	1		41	Screw 3.57	1	129984-001

C. Zigzag mechanism Zickzackmechanismusvorrichtung
Mécánisme des points zigzag Mecanismo de zigzag



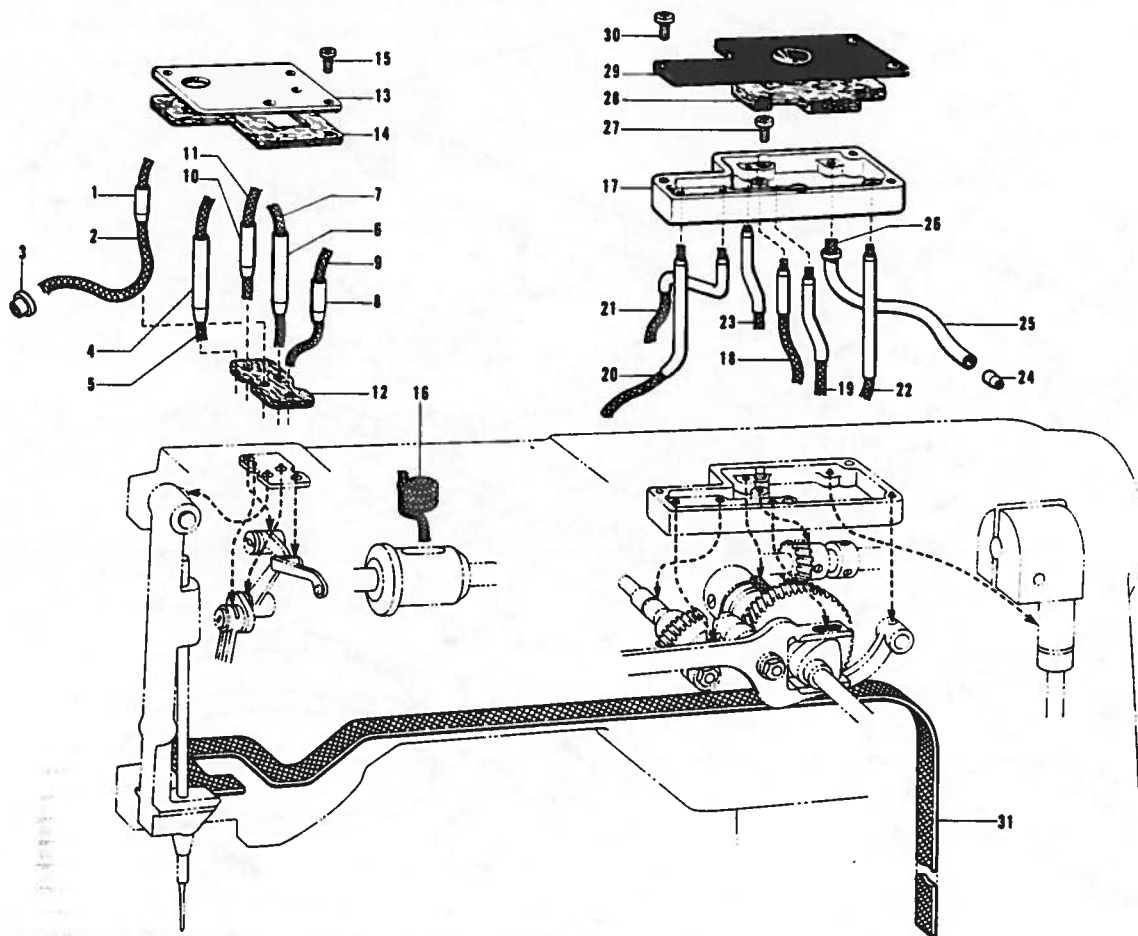
Ref. No.	Name of Parts	Q'ty	Parts No.	Ref. No.	Name of Parts	Q'ty	Parts No.
1	Zigzag Fork Rod	1	117597-001	30-3-1	Pulse Motor	1	157029-001
2	Felt	1	117598-001	30-3-2	Terminal Pin 1	6	157224-001
3	Zigzag Cam	1	117599-000	30-3-3	Connector 1	1	157225-000
4	Screw 5.95	2	013760-610	31	Rating Plate 1	1	157172-001
5	Zigzag Shaft	1	117600-001	32	Bolt 4 x 10	4	018401-022
6	Zigzag Upper Shaft Gear Assembly	1	180974-001	33	Washer 4	4	025040-232
6-1	Zigzag Shaft Gear	1		34	Slit Assembly	1	157122-000
6-2	Screw 6.35	2	131007-001	35	Screw 3 x 5	1	014300-522
7	Zigzag Shaft Driving Gear Assembly	1	180975-001	36	Cap	1	157124-001
7-1	Zigzag Shaft Driving Gear	1		37	Screw 3 x 6	3	007300-613
7-2	Screw 6.35	2	131007-001	38	Cord Holder C	2	157170-001
8	Zigzag Shaft Bushing	1	117603-000	39	Screw 357-40 x 8	2	060670-812
9	Felt	1	100633-001	40	Cord Holder C	2	157170-001
10	Screw 5.95	1	151605-001	41	Screw 357-40 x 8	2	060670-812
11	Collar	1	117947-001	42	Screw 3 x 8	2	007300-803
12	Screw 6.35	2	131007-001	43	Zigzag Photo Sensor Assembly	1	157021-001
13	Feed Link	1	157244-001	44	"O" Ring	1	104564-001
14	Screw 7.14	1	157010-001	45	Timing Rod U	1	157236-001
15	Nut 7.14	1	104689-002	46	Hook Shaft Adjusting Lever	1	117624-001
16	Gear	1	157011-001	47	Felt	1	117581-001
17	Screw 7.14	1	145486-001	48	Shaft U	1	117625-001
18	Nut 7.14	1	104689-002	49	Washer	1	116629-001
19	Screw 4.37	2	104908-001	50	Stop Ring E6	1	048060-342
20	Zigzag Transverse Shaft	1	157012-001	51	Screw 5.95	1	110087-001
21	Zigzag Transverse Bushing	1	157013-001	52	Adjusting Lever Shaft	1	117626-001
22	Screw 5.95	1	151605-001	53	Screw 5.95	1	151605-001
23	Screw	1	117613-001	54	Collar	1	117671-002
24	Screw 4.37	1	151603-002	55	Screw 6.35	2	100251-001
25	Washer	1	100507-000	56	Timing Adjusting Lever Assembly D	1	118131-001
26	Naming Plate	1	157036-001	57	Shaft D	1	118135-001
27	Packing	1	117620-000	58	Screw 595-28 x 8	1	062760-812
28	Screw 357-40 x 8	4	062670-812	59	Collar Assembly	1	118379-001
29	Pulley Bush Assembly	1	118371-001	60	Felt	1	117598-001
29-1	Collar	1		61	Wick	2	117629-001
29-2	Screw 6.35	2	100251-001	62	Oil Cap	2	104833-001
30	Pulse Motor Complete Assembly	1	157120-001	63	Felt Holding Wire	1	118666-001
30-1	Pinion Gear	1	157121-000	64	Set Collar	1	118136-001
30-2	Screw 4 x 5	2	014400-522	65	Screw 6.35	2	131007-001
30-3	Pulse Motor Assembly	1	157028-001				

D. Rotary hook mechanism Greifervorrichtung
 Mécanisme du crochet rotatif Mecanismo del cangrejo



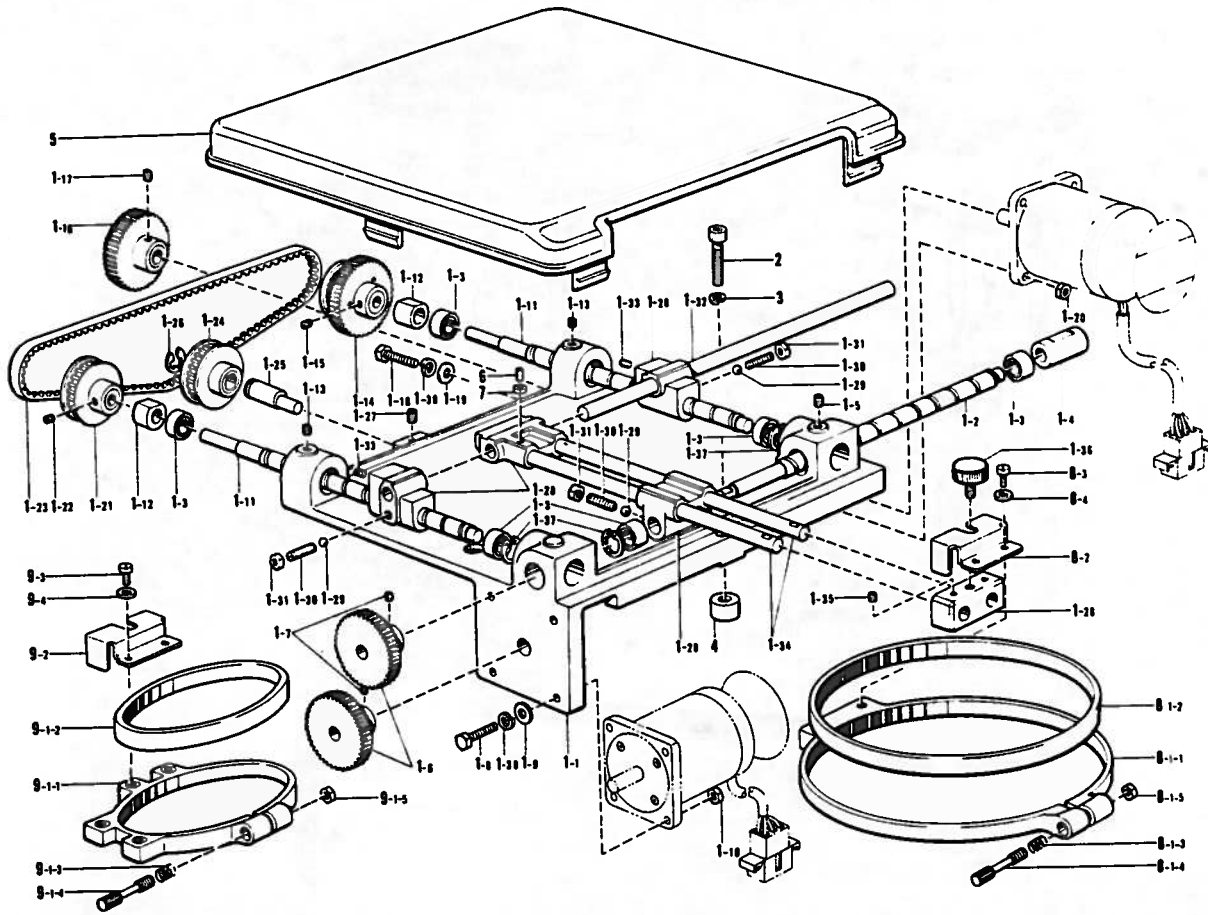
Ref. No.	Name of Parts	Q'ty	Parts No.	Ref. No.	Name of Parts	Q'ty	Parts No.
1	Upper Shaft Gear Assembly	1	118278-001	25-1	Collar	2	
1-1	Upper Shaft Gear	1		25-2	Screw 6.35	4	131007-003
1-2	Screw 6.35	2	100251-001	26	Lower Shaft Bushing Left	1	117583-001
1-3	Vertical Shaft Upper Gear	1		27	Felt	1	100633-001
1-4	Screw 6.35	2	100251-001	28	Screw 5.95	1	151605-001
2	Gear Case Assembly	1	118280-101	29	Seal	1	117584-001
2-1	Upper Gear Case	1		30	Lower Shaft Gear Assembly	1	118285-001
2-2	Screw 635-28 x 30	1	062783-012	30-1	Lower Shaft Gear	1	
3	Screw 635-28 x 8	1	062780-812	30-2	Screw 6.35	2	131007-001
4	Gear Case Supporter	1	117945-001	31	Hook Driving Gear Assembly	1	118286-001
5	Seal	1	103796-001	31-1	Rotary Hook Shaft Gear	1	
6	Vertical Shaft	1	117569-001	31-2	Screw 6.35	3	131007-001
7	Vertical Shaft Bushing Upper	1	117570-001	32	Gear Case	1	117587-001
8	Screw 5.95	1	013760-610	33	Screw 357-40 x 6	4	062670-612
9	Collar Assembly	1	118299-001	34	Gear Case Cover Upper	1	117588-001
9-1	Collar	1		35	Screw 3.57	2	102843-004
9-2	Screw 6.35	2	131007-003	36	Gear Case Cover Lower	1	117589-001
10	Vertical Shaft Bushing Lower	1	117571-001	37	Screw 357-40 x 6	3	062670-612
11	Screw 5.95	1	013761-410	38	Rotary Hook Shaft Bushing	1	117590-001
12	Vertical Shaft Gear Assembly	1	118279-001	39	Felt	1	100633-001
12-1	Vertical Shaft Gear	1		40	Screw 5.95	2	151605-001
12-2	Screw 6.35	2	100251-001	41	Wick	1	117591-001
13	Gear Case Assembly	1	140740-001	42	Rotary Hook Shaft Assembly	1	117592-001
13-1	Lower Gear Case	1		42-1	Rotary Hook Shaft	1	
13-2	Screw 6.35 x 18	2	S01304-001	42-2	Screw 3.57 L	1	145465-001
14	Screw 4.76	1	013711-010	43	Rotary Hook Assembly	1	140519-001
15	Gear Case Seal	1	140536-001	44	Bobbin Case Holder Position Bracket	1	117595-001
16	Lower Shaft	1	117577-001	45	Screw 437-40 x 8	1	060680-812
17	Lower Shaft Gear Assembly	1	180973-001	46	Bobbin Case Assembly	1	117596-001
17-1	Lower Shaft Gear	1		46-1	Bobbin Case	1	
17-2	Screw 6.35	2	105299-003	46-2	Lower Thread Adjusting Spring	1	182392-001
18	Lower Shaft Bushing Right	1	117580-001	46-3	Spring Set Screw	1	181938-001
19	Felt	1	117581-001	46-4	Spring Adjusting Screw	1	181937-001
20	Seal	1	117584-001	47	Bobbin	1	146290-001
21	Screw 5.95	1	151604-002	48	Screw 357-40 x 6	2	060670-612
22	Lower Shaft Bushing M	1	117582-001	49	Connecting Collar Assembly	1	118129-001
23	Felt	1	100633-001	49-1	Connecting Collar R	1	
24	Screw 5.95	1	151605-001	49-2	Screw 6.35	2	131007-001
25	Collar Assembly	2	118299-001	49-3	Connecting Collar L	1	117579-001

E. Lubrication / Schmierung
Lubrification / Lubricación



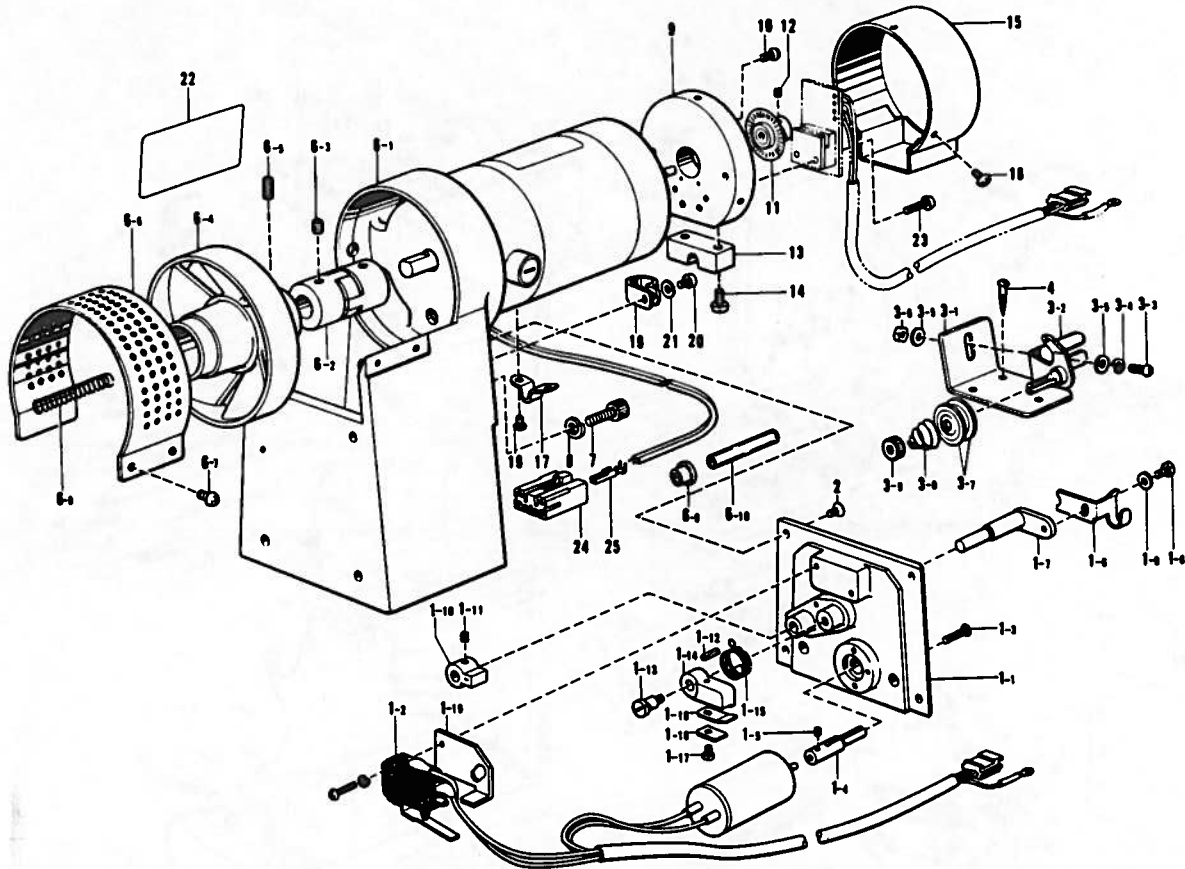
Ref. No.	Name of Parts	Q'ty	Parts No.	Ref. No.	Name of Parts	Q'ty	Parts No.
1	Oil Pipe	1	117656-900	17	Oil Tank Assembly	1	157006-000
2	Wick	1	117007-001	18	Wick 4 x 4	1	148302-001
3	Wick Nipper	1	109993-001	19	Wick 4 x 4	1	109405-001
4	Oil Pipe	1	116966-000	20	Wick 4 x 4	1	152973-001
5	Wick	1	117006-001	21	Wick 4 x 4	1	109405-001
6	Oil Pipe	1	116969-000	22	Wick 4 x 4	1	109405-001
7	Wick 4 x 4	1	109405-001	23	Wick	1	112999-000
8	Oil Pipe	1	116968-000	24	Oil Pipe	1	116968-000
9	Wick	1	117591-001	25	Vinyl Tube	1	116984-000
10	Oil Pipe	1	116967-000	26	Wick 4 x 4	1	152973-001
11	Wick	1	111191-001	27	Screw 3.57-40 x 4	2	062671-412
12	Felt	1	117642-001	28	Felt	1	117957-001
13	Oil Tank Lid	1	117643-003	29	Oil Tank Lid	1	117958-001
14	Packing L	1	117644-000	30	Screw 357-40 x 6	3	060670-612
15	Screw 3.57-40 x 6	4	062670-612	31	Wick	1	117022-001
16	Wick 6 x 6	1	108808-001				

F. Presser foot and feed guide mechanism
 Transportführung und Stoffdrückerfuß
 Mécanisme du guide de l'entraînement. Mécanisme du pied presseur
 Mecanismo de la guía de alimentación. Mecanismo de la prensa telas



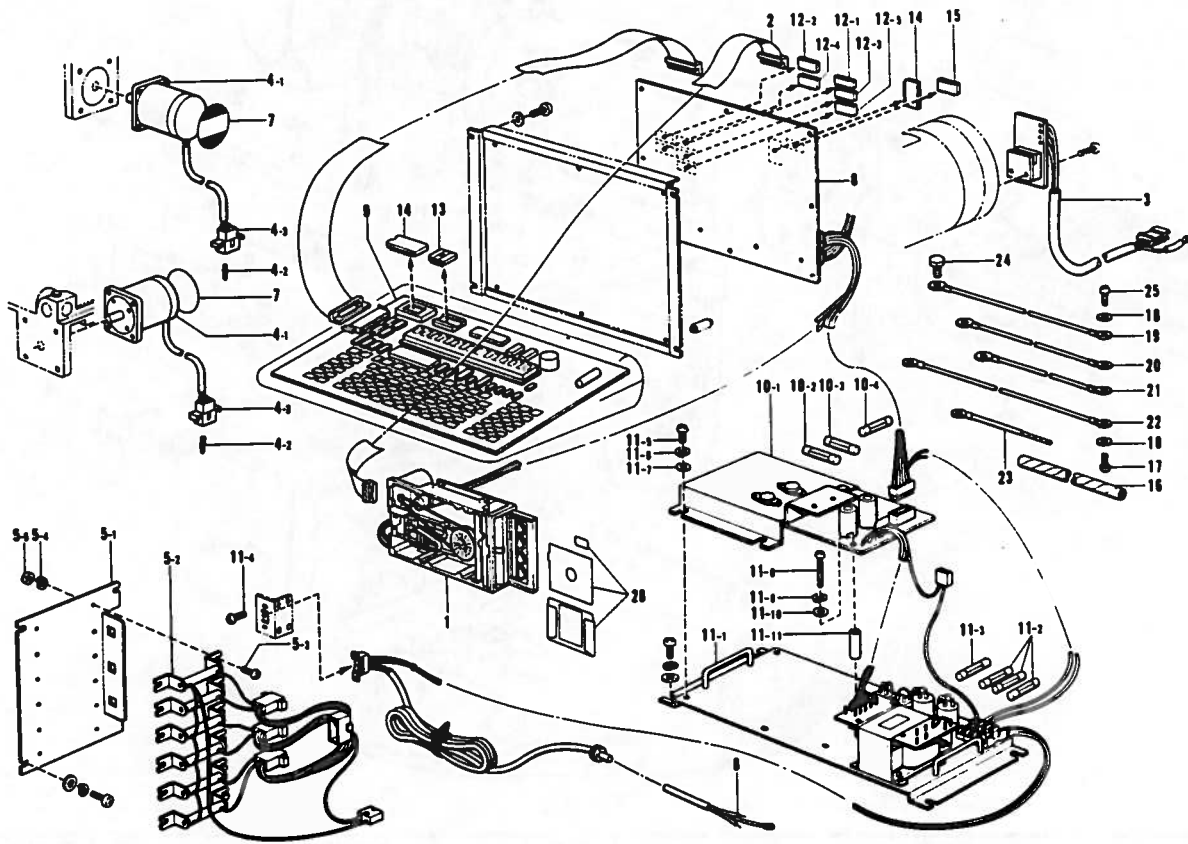
Ref. No.	Name of Parts	Q'ty	Parts No.	Ref. No.	Name of Parts	Q'ty	Parts No.
1	X-Y Feeder Assembly	1	157133-101	1-32	Guide Bar X	1	157152-001
1-1	Feeder Base	1	157137-001	1-33	Screw 4	2	014400-822
1-2	Shaft X	1	157139-001	1-34	Guide Bar Y	2	157155-001
1-3	Bearing 8	6	530138-001	1-35	Screw 4	2	014400-422
1-4	Collar L	1	157142-001	1-36	Screw M6	1	157158-001
1-5	Screw 5	1	014500-522	1-37	Stop Ring	3	048160-242
1-6	Gear A	2	157141-000	1-38	Spring Washer 2-5	8	028050-242
1-7	Screw 4 x 5	4	014400-522	2	Bolt 5 x 30	5	018503-022
1-8	Bolt 5 x 20	4	017502-012	3	Spring Washer 2-5	5	028050-242
1-9	Washer 5	4	025050-232	4	Rubber Cushion	5	157138-000
1-10	Nut 5	4	021500-103	5	Feed Cover	1	157161-000
1-11	Shaft Y	2	157143-001	6	Screw 4	1	014400-822
1-12	Collar 8	1	157144-001	7	Nut 4	1	021400-202
1-13	Screw 5	2	014500-522	8	Hoop (A) Assembly	1	157258-001
1-14	Gear B	1	157145-000	8-1-1	Outer Hoop A Assembly	1	157043-001
1-15	Screw 4 x 5	2	014400-522	8-1-2	Inner Hoop A	1	157047-000
1-16	Gear A	1	157141-000	8-1-3	Spring	1	121764-001
1-17	Screw 4 x 5	2	014400-522	8-1-4	Screw 3.57	1	121765-001
1-18	Bolt 5 x 20	4	017502-012	8-1-5	Nut 3.57	1	021670-202
1-19	Washer 5	4	025050-232	8-2	Holder	1	157049-001
1-20	Nut 5	4	021500-103	8-3	Screw 3 x 8	2	007300-803
1-21	Timing Pulley	1	157146-000	8-4	Washer 3	2	025030-233
1-22	Screw 4 x 5	2	014400-522	9	Hoop D Assembly	1	157261-001
1-23	Timing Belt	1	157147-000	9-1-1	Outer Hoop D Assembly	1	157230-001
1-24	Tension Pulley	1	157148-000	9-1-2	Inner Hoop D	1	157203-000
1-25	Eccentric Shaft	1	157149-001	9-1-3	Spring	1	121764-001
1-26	Stop Ring E7	1	048070-342	9-1-4	Screw 3.57	1	121765-001
1-27	Screw 4	1	014400-822	9-1-5	Nut 3.57	1	021670-202
1-28	Joint	1	183162-101	9-2	Holder	1	157049-001
1-29	Steel Ball 3	4	071030-050	9-3	Screw 3 x 8	2	007300-803
1-30	Screw	4	157151-001	9-4	Washer 3	2	025030-233
1-31	Nut 5	4	021500-103				

G. Bobbin winder and motor mechanism / Spuler und Motor
 Mécanisme du bobineur. Mécanisme du moteur
 Mecanismo del devanador de la canilla. Mecanismo del motor



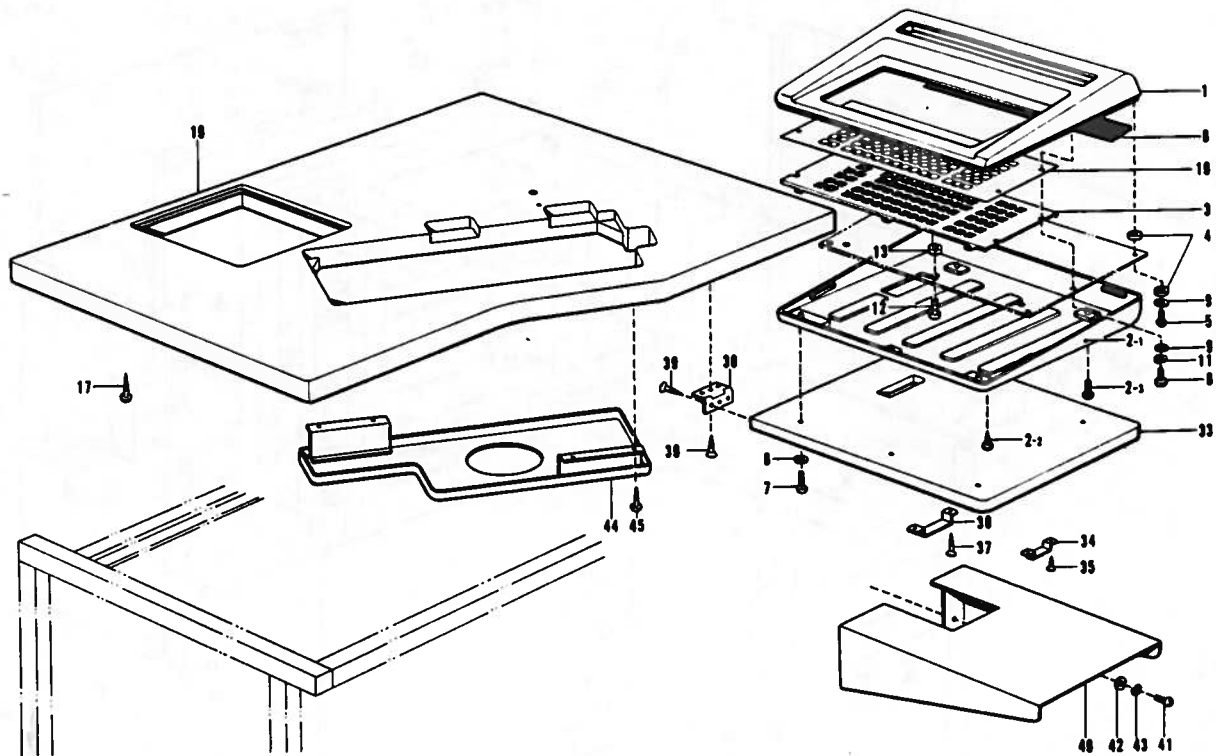
Ref. No.	Name of Parts	Q'ty	Parts No.	Ref. No.	Name of Parts	Q'ty	Parts No.
1	Bobbin Winder Assembly	1	157015-001	4	Screw 4.1 x 13	3	031411-304
1- 1	Motor Setting Plate	1	157016-001	6	D.D Motor Assembly	1	157069-001
1- 2	Motor Assembly	1		6- 1	D.C Motor Assembly	1	157134-001
1- 3	Screw 3 x 12	3	006301-204	6- 2	Coupling Assembly A	1	157183-000
1- 4	Winding Shaft	1	152358-001	6- 3	Screw 6.35	4	014770-622
1- 5	Screw 3	1	014300-322	6- 4	Pulley	1	152389-001
1- 6	Bobbin Presser Plate	1	152645-001	6- 5	Screw 5 x 12	2	014501-322
1- 7	Bobbin Holder Arm	1	154024-001	6- 6	Cover	1	157070-001
1- 8	Screw 3 x 6	1	007300-613	6- 7	Screw 3 x 6	4	008300-604
1- 9	Washer 3	1	025030-233	6- 8	Spring	1	157185-001
1-10	Claw for Bobbin Winder	1	142566-001	6- 9	Cord Bush	1	146080-000
1-11	Screw 4.37	2	014680-422	6-10	Vinyl Tube	1	157282-000
1-12	Spring Pin	1	047301-042	7	Bolt 6 x 16	4	018061-622
1-13	Screw	1	152362-001	8	Spring Washer 2-6	4	028060-242
1-14	Lever	1	152361-001	9	Encoder Base	1	157165-000
1-15	Spring A	1	152363-001	10	Screw 4 x 12	2	002401-203
1-16	Elastic Plate	1	111942-001	11	G.P Slit Assembly 96A	1	157181-000
1-17	Screw 318-40 x 5	1	060660-512	12	Screw 3 x 5	1	014300-522
1-18	Washer	1	111943-001	13	Bush	1	157166-000
1-19	Stopper	1	158597-001	14	Screw 3 x 8	2	007300-803
2	Screw 4 x 4	4	006400-804	15	Encoder Cover	1	157071-001
3	Bobbin Thread Guide Assembly	1	157017-001	16	Screw 3 x 6	3	008300-604
3- 1	Setting Plate	1	157018-001	17	Cord Holder	1	157072-001
3- 2	Bobbin Thread Guide	1	145571-101	18	Screw 3 x 4	2	002300-403
3- 3	Screw 4 x 10	1	002401-003	19	Cord Holder #9	1	525907-000
3- 4	Spring Washer 2-4	1	028040-242	20	Screw 4 x 10	1	002401-003
3- 5	Washer 4	2	025040-233	21	Washer 4	1	025040-232
3- 6	Nut 4	1	021400-103	22	D.D Motor Name Plate	1	157266-001
3- 7	Tension Disc	2	145446-001	23	Screw 3 x 16	2	002301-605
3- 8	Tension Spring	1	100401-001	24	D.D Motor Connector	1	157205-000
3- 9	Tension Control Nut	1	100136-001	25	Terminal Pin	5	152476-000

H. Power supply equipment mechanism / Stromversorgung
 Mécanisme de l'équipement en alimentation électrique
 Mecanismo de la equipo de alimentación de corriente



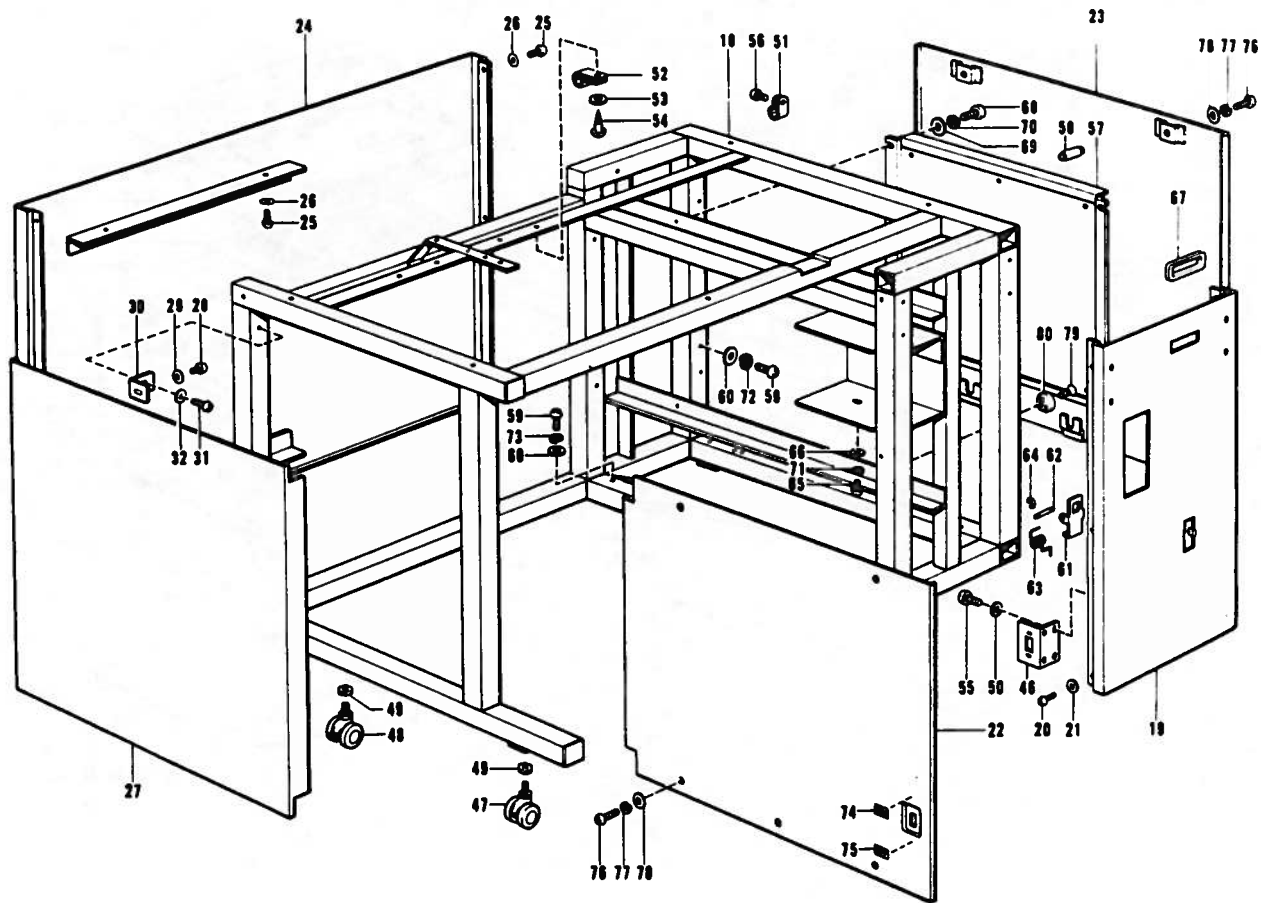
Ref. No.	Name of Parts	Q'ty	Parts No.	Ref. No.	Name of Parts	Q'ty	Parts No.
1	Floppy Drive	1	157024-001	11- 5	Screw 4 x 10	4	002401-003
2	Floppy Harness	1	157025-001	11- 6	Spring Washer 2-4	4	028040-243
3	G.P Encoder Assembly	1	157026-001	11- 7	Washer 4	4	025040-233
4	Pulse Motor Assembly	2	157028-001	11- 8	Screw 3 x 30	2	002303-006
4- 1	Pulse Motor	2	157029-001	11- 9	Washer 2-3	2	028030-243
4- 2	Terminal Pin	12	157224-001	11-10	Washer 3	2	025030-233
4- 3	Connector	2	157225-000	11-11	Spacer	2	157211-000
5	Resistor Assembly	1	157032-001	12	P-ROM-2732-01 Assembly	1	157188-001
5- 1	Resistor Setting Plate	1	157033-000	12- 1	P-ROM-2732-01-1	1	157189-001
5- 2	Resistor Assembly	1	157019-001	12- 2	P-ROM-2732-01-2	1	157190-001
5- 3	Screw 4 x 10	12	002401-003	12- 3	P-ROM-2732-01-3	1	157191-001
5- 4	Spring Washer 2-4	12	028040-243	12- 4	P-ROM-2732-01-4	1	157192-001
5- 5	Nut 4	12	021400-103	12- 5	P-ROM-2732-01-5	1	157193-001
6	Power Supply Cord Assembly	1	571999-001	13	P-ROM-2732-02	1	157004-001
7	Rating Plate 2	3		14	CPU-7801	2	157194-001
8	Printed Circuit Board Assembly	1	157160-001	15	P-ROM-2716-01	1	157196-001
9	Keyboard Circuit Board Assembly	1	157176-001	16	Spiral Tube	1	152504-000
10	Power Supply Assembly	1	157177-001	17	Screw 4 x 5	1	002400-502
10- 1	Power Supply Board	1	157222-001	18	Washer 3	5	025040-232
10- 2	Fuse 1A	1	750476-000	19	Earth Code (A)	1	157269-001
10- 3	Fuse 3A	1	750577-000	20	Earth Code (B)	2	157269-002
10- 4	Fuse 5A	1	157218-000	21	Earth Code (C)	1	157269-003
11	Board Assembly	1	157171-001	22	Earth Code (D)	1	157270-001
11- 1	Power Supply Unit	1	157223-001	23	Earth Code (E)	1	157271-001
11- 2	Fuse 5A	3	157219-000	24	Bolt 5.95 x 12	3	017761-213
11- 3	Fuse 8A-D	1	157220-000	25	Screw 4 x 10	4	002401-003
11- 4	Screw 3 x 6	2	002300-603	26	Floppy Disc	1	157281-000

J. Control box. Power table mechanism (1)
 Schaltkasten. Motorgestell (1)
 Mécanisme du boîtier de contrôle. Mécanisme du plateau de la machine (1)
 Mecanismo del caja de controles. Mecanismo del mesa de la máquina (1)



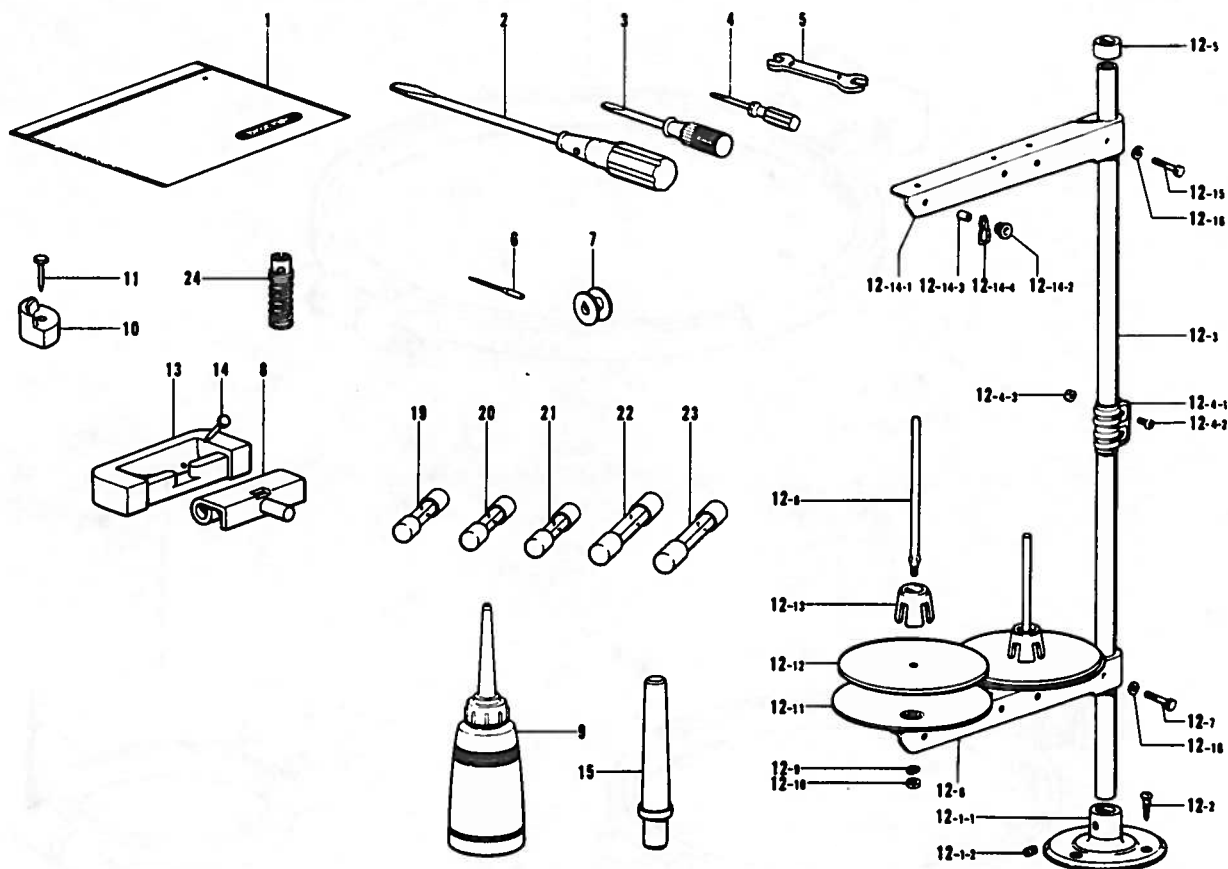
Ref. No.	Name of Parts	Q'ty	Parts No.	Ref. No.	Name of Parts	Q'ty	Parts No.
1	Key Board Cover A	1	157186-000	16	Table	1	157073-101
2	Cover B with Screw Assembly	1	183164-001	17	Screw 4.5 x 25	6	032452-502
2-1	Key Board Cover B	1	157187-000	33	Sub-table for Key Board	1	157107-001
2-2	Pin 4	2	039412-514	34	Receiver	1	157108-001
2-3	Pin 4	2	038422-014	35	Screw 2.4 x 10	1	033241-002
3	Key Board Plate	1	157162-001	36	Fixing Plate	1	157109-001
4	Washer	6	157167-000	37	Screw 3.1 x 20	2	033312-004
5	Screw 4 x 18	3	002401-813	38	Hinge	2	152423-000
6	Screw 4 x 8	4	002400-803	39	Screw 3.1 x 13	8	034311-302
7	Screw 4 x 18	5	002401-813	40	Sub-table Supporter	1	157198-001
8	Shadow Mark 2	1	157241-001	41	Screw 4 x 10	4	002401-003
9	Washer 4	12	025040-232	42	Washer 4	4	025040-232
10	Key Board Sheet	1	157040-001	43	Spring Washer 2-4	4	028040-242
11	Washer 2-4	4	028040-242	44	Oil Pan	1	157116-001
12	Screw 3 x 10	3	002301-003	45	Screw 4.1 x 13	4	031411-304
13	Nut 3	3	021300-103				

J. Power table mechanism (2) / Motorgestell (2)
 Mécanisme du plateau de la machine (2) / Mecanismo del mesa de la máquina (2)



Ref. No.	Name of Parts	Q'ty	Parts No.	Ref. No.	Name of Parts	Q'ty	Parts No.
18	Stand Assembly	1	157074-001	56	Screw 4 x 10	6	002401-003
19	Front Cover Assembly	1	157077-001	57	Setting Plate PC Board	1	157111-001
20	Screw 4 x 10	6	002401-003	58	Fuse	8	157216-001
21	Washer 4	6	025040-232	59	Screw 4 x 10	8	002401-003
22	Center Cover Assembly	1	157083-101	60	Washer 4	8	025040-232
23	Side Cover Right Assembly	1	157090-101	61	Sub-table Stopper	1	157079-001
24	Rear Cover Assembly	1	157092-001	62	Stopper Setting Bar	1	157081-001
25	Screw 4 x 10	10	002401-003	63	Stopper Spring	1	157082-001
26	Washer 4	10	025040-232	64	Stop Ring	2	048020-342
27	Side Cover Left Assembly	1	157095-001	65	Screw 3 x 8	2	002300-803
28	Screw 4 x 5	6	002400-502	66	Washer 3	2	025030-233
29	Washer 4	6	025040-232	67	Edging	1	157099-000
30	Cover Connector Setting Plate B	6	157098-001	68	Screw 5 x 10	4	002501-002
31	Screw 4 x 10	6	002401-003	69	Washer 5	4	025050-232
32	Washer 4	6	025040-232	70	Spring Washer 2-5	4	028050-242
46	Switch Setting Plate	1	157117-001	71	Spring Washer 2-3	2	028030-243
47	Caster A	2	157118-001	72	Spring Washer 2-4	4	028040-242
48	Caster B	2	157119-001	73	Spring Washer 2-4	4	028040-242
49	Nut 12	4	021120-304	74	Switch Label A2	1	157238-001
50	Washer 4	2	025040-232	75	Switch Label B2	1	157239-001
51	Cord Holder #9	3	525907-000	76	Screw 4 x 10	7	002401-003
52	Cord Holder #6	3	525664-000	77	Spring Washer 2-4	7	028040-242
53	Washer 4	6	025040-232	78	Washer 4	7	025040-232
54	Screw 4.1 x 13	6	031411-304	79	Screw 4 x 10	3	004401-003
55	Screw 4 x 10	2	002401-003	80	Collar	3	157674-000

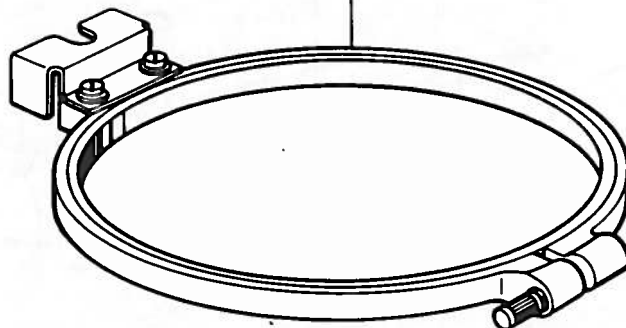
Z. Accessories / Zubehör / Accessoires / Accesorios



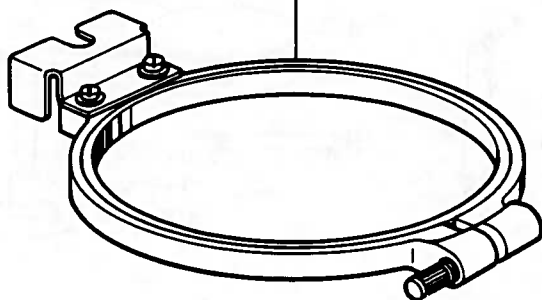
Ref. No.	Name of Parts	Q'ty	Parts No.	Ref. No.	Name of Parts	Q'ty	Parts No.
1	Vinyl Bag	1	122991-001	12- 7	Bolt 5 x 28	1	017502-803
2	Screw Driver 5.5 x 190	1	101572-101	12- 8	Spool Shaft (B)	2	150179-001
3	Screw Driver 3.4 x 70	1	118837-001	12- 9	Spring Washer 2-5	2	028050-243
4	Screw Driver 1.9 x 52	1	142443-001	12-10	Nut 5	2	021500-103
5	Spanner 8 x 9	1	100887-001	12-11	Spool Stand Base	2	150180-000
6	Needle DB x 1	4	100265-031	12-12	Spool Mat	2	150182-000
7	Bobbin	3	146290-001	12-13	Spool Cushion	2	126863-000
8	Head Hinge	2	143882-001	12-14	Thread Hanger Assembly	1	150192-003
9	Oiler	1	121156-001	12-14-1	Spool Holder 2	1	150178-001
10	Head Cushion	4	148890-101	12-14-2	Thread Hanger	2	
11	Nail	4	109714-000	12-14-3	Thread Bushing	2	142990-001
12	Cotton Stand Assembly	1	150150-003	12-14-4	Thread Spring	2	150184-001
12- 1	Cotton Stand Base Assembly	1	150139-001	12-15	Bolt 5 x 28	1	017502-803
12- 1-1	Cotton Stand Base	1	150189-001	12-16	Washer 5	2	025050-233
12- 1-2	Screw 6 x 7	2	150181-101	13	Rubber Hinge	2	143910-001
12- 2	Screw 4.5 x 22	3	031452-203	14	Nail	4	109714-000
12- 3	Pipe	2	150172-001	15	Head Rest B	1	154004-002
12- 4	Joint for Cotton Stand	1	150106-001	19	Fuse 5A-S	1	157218-000
12- 4-1	Joint	1	150173-001	20	Fuse 3A-S	1	750577-000
12- 4-2	Screw 5 x 14	2	150202-001	21	Fuse 1A-S	1	750476-000
12- 4-3	Nut 5	2	021500-103	22	Fuse 5A-D	1	157219-000
12- 5	Cap	1		23	Fuse 8A-D	1	157220-000
12- 6	Spool Holder 2	1	150178-001	24	Needle Bar Presser Spring	1	800847-001

OPTIONAL PARTS / SONDERZUBEHÖR
PIECES EN OPTION / PIEZAS OPCIÓN

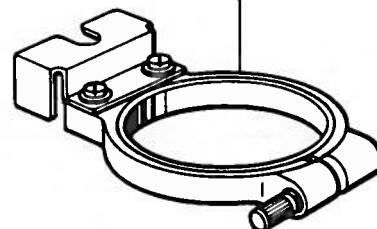
Hoop (A) Assembly
157258-001



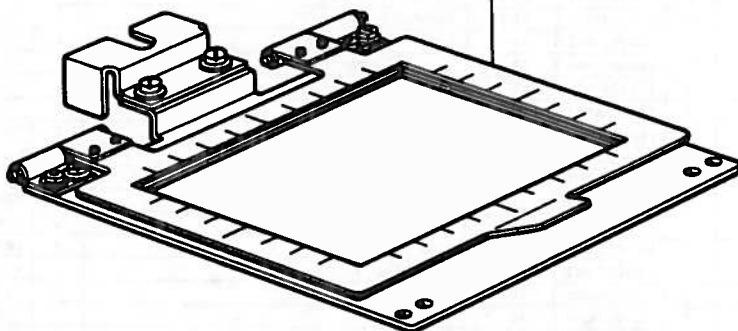
Hoop (B) Assembly
157259-001



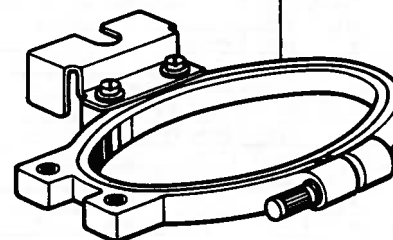
Hoop (C) Assembly
157260-001



Magnet Clamp
157261-001



Hoop (D) Assembly
157274-001



INDEX / VERZEICHNIS
INDEX / INDICE

Parts No.	Ref. No.	Remark	Parts No.	Ref. No.	Remark	Parts No.	Ref. No.	Remark	Parts No.	Ref. No.	Remark
S0084 7-001	Z-24		017502-803	Z-12-15		048020-342	A-36		109993-001	E- 3	
S01304-001	D-13-2		017761-213	H-24			J-64		110087-001	C-51	
001300-503	A-39		018061-622	G- 7		048060-342	C-50		110124-001	B-22-7	
002300-403	G-18		018401-022	C-32		048070-342	F- 1-26		110367-001	B-24	
002300-603	H-11- 4		018503-022	F- 2		048160-242	F- 1-37		111191-001	E-11	
002300-803	J-65		021120-304	J-49		060660-512	G- 1-17		111937-001	A-10	
002301-003	J-12		021300-103	A-41		060670-612	D-48		111942-001	G- 1-16	
002301-605	G-23			J-13			E-30		111943-001	G- 1-18	
002303-006	H-11- 8		021400-103	G- 3- 6		060670-812	C-39		112999-000	E-23	
002400-502	H-17			H- 5- 5			C-41		113031-001	B-17	
	J-28		021400-202	F- 7		060680-812	B-23		114931-002	A-21	
002400-803	J- 6		021500-103	F- 1-10			D-45		116629-001	C-49	
002401-003	G- 3- 3			F- 1-20		060711-612	A- 5		116949-000	B-10	
	G-20			F- 1-31		062670-412	A-20		116966-000	E- 4	
	H- 5- 3			Z-12- 4-3		062670-612	A- 9		116967-000	E-10	
	H-11- 5			Z-12-10			A-12		116968-000	E- 8	
	H-25		021670-202	F- 8- 1-5			D-33			E-24	
	J-20			F- 9- 1-5			D-37		116969-000	E- 6	
	J-25		025030-233	A-40			E-15		116981-000	A- 8	
	J-31			F- 8- 4		062670-812	C-28		116984-000	E-25	
	J-41			F- 9- 4		062671-412	E-27		117006-001	E- 5	
	J-55			G- 1- 9		062760-812	C-58		117007-001	E- 2	
	J-56			H-11-10		062780-812	D- 3		117022-001	E-31	
	J-59			J-66		062783-012	D- 2-2		117535-001	B- 1	
	J-76		025040-232	C-33		071030-050	F- 1-29		117542-000	B- 8	
002401-203	G-10			G-21		100080-003	B-22-4		117544-001	B-13	
002401-813	J- 5			H-18		100136-001	G- 3- 9		117546-001	B-13-2	
	J- 7			J- 9		100248-001	B- 3		117547-001	B-16	
002501-002	J-68			J-21			B- 6		117549-001	B-19	
004401-003	J-79			J-26		100250-001	B-11		117550-101	B-21	
006301-204	G- 1- 3			J-29		100251-001	B-12		117560-001	B-22-5	
006400-804	G- 2			J-32			C-29-2		117569-001	D- 6	
007300-613	C-37			J-42			C-55		117570-001	D- 7	
	G- 1- 8			J-50			D- 1-2		117571-001	D-10	
007300-803	C-42			J-53			D- 1-4		117577-001	D-16	
	F- 8- 3			J-60			D-12-2		117579-001	D-49-3	
	F- 9- 3			J-78		100265-031	B-26		117580-001	D-18	
	G-14		025040-233	G- 3- 5			Z- 6		117581-001	C-47	
008300-604	A-43			H-11- 7		100279-101	B-32			D-19	
	G- 6- 7		025050-232	F- 1- 9		100401-001	G- 3- 8		117582-001	D-22	
	G-16			F- 1-19		100402-004	A-32-3		117583-001	D-26	
013711-010	B-15			J-69		100507-000	C-25		117584-001	D-20	
	B-18		025050-233	Z-12-16		100633-001	C- 9			D-29	
	D-14		025680-232	A-30			D-23		117587-001	D-32	
013760-610	B- 7		028030-243	H-11- 9			D-27		117588-001	D-34	
	C- 4			J-71			D-39		117589-001	D-36	
	D- 8		028040-242	G- 3- 4		100887-001	Z- 5		117590-001	D-38	
013761-410	B- 4			J-11		101572-101	Z- 2		117591-001	D-41	
	D-11			J-43		102731-002	A-16			E- 9	
013780-810	B- 9			J-72		102843-004	D-35		117592-001	D-42	
014300-322	G- 1- 5			J-73		103013-000	B-31		117595-001	D-44	
014300-522	C-35			J-77		103796-001	D- 5		117596-001	D-46	
	G-12		028040-243	H- 5- 4		103950-003	A-33		117597-001	C- 1	
014400-422	F- 1-35			H-11- 6		104449-001	A-11		117598-001	C- 2	
014400-522	C-30-2		028050-242	F- 1-38		104564-001	C-44			C-60	
	F- 1- 7			F- 3		104689-002	C-15		117599-000	C- 3	
	F- 1-15			J-70			C-18		117600-001	C- 5	
	F- 1-17		028050-243	Z-12- 9		104833-001	C-62		117603-000	C- 8	
	F- 1-22		028060-242	G- 8		104908-001	C-19		117613-001	C-23	
014400-822	F- 1-27		031411-304	G- 4		105163-001	B-20		117620-000	C-27	
	F- 1-33			J-45		105234-003	A-29		117624-001	C-46	
	F- 6			J-54		105299-003	D-17-2		117625-001	C-48	
014500-522	F- 1- 5		031452-203	Z-12- 2		108808-001	E-16		117626-001	C-52	
	F- 1-13		032452-502	J-17		108960-002	A-17		117629-001	C-61	
014501-222	G- 6- 5		033241-002	J-35		109405-001	E- 7		117632-001	A-32-2	
014680-422	G- 1-11		033312-004	J-37			E-19		117636-001	A-19	
014770-622	G- 6- 3		034311-302	J-39			E-21		117637-001	A-15	
017502-012	F- 1- 8		038422-014	J- 2-3			E-22		117640-001	A-18	
	F- 1-18		039412-514	J- 2-2		109714-000	Z-11		117642-001	E-12	
017502-803	Z-12- 7		047301-042	G- 1-12			Z-14		117643-003	E-13	

Parts No.	Ref. No.	Remark	Parts No.	Ref. No.	Remark	Parts No.	Ref. No.	Remark	Parts No.	Ref. No.	Remark
117644-000	E-14		146059-001	A-27		157028-001	H- 4		157172-001	C-31	
117656-000	E- 1		146060-000	A-28		157029-001	C-30-3-1		157176-001	H- 9	
117671-002	C-54		146080-000	G- 6- 9			H- 4- 1		157177-001	H-10	
117938-001	B- 5		146206-001	A-25		157032-001	H- 5		157181-000	G-11	
117939-001	B-14		146290-001	D-47		157033-000	H- 5- 1		157183-000	G- 6- 2	
117945-001	D- 4			Z- 7		157036-001	C-26		157185-001	G- 6- 8	
117947-001	C-11		147732-001	B-22-3		157040-001	J-10		157186-000	J- 1	
117957-001	E-28		148302-001	E-18		157043-001	F- 8- 1-1		157187-000	J- 2-1	
117958-001	E-29		148309-002	B-28		157047-000	F- 8- 1-2		157188-001	H-12	
118129-001	D-49		148310-001	B-28-2		157049-001	F- 8- 2		157189-001	H-12- 1	
118131-001	C-56		148890-101	Z-10			F- 9- 2		157190-001	H-12- 2	
118135-001	C-57		148919-003	A- 7		157065-001	B-33		157191-001	H-12- 3	
118136-001	C-64		150106-001	Z-12- 4		157066-001	B-37		157192-001	H-12- 4	
118197-001	A-32-4		150139-001	Z-12- 1		157069-001	G- 6		157193-001	H-12- 5	
118278-001	D- 1		150150-003	Z-12		157070-001	G- 6- 6		157194-001	H-14	
118279-001	D-12		150172-001	Z-12- 3		157071-001	G-15		157196-001	H-15	
118280-101	D- 2		150173-001	Z-12- 4-1		157072-001	G-17		157197-001	B-40	
118285-001	D-30		150178-001	Z-12- 6		157073-101	J-16		157198-001	J-40	
118286-001	D-31			Z-12-14-1		157074-001	J-18		157203-000	F- 9- 1-2	
118299-001	D- 9		150179-001	Z-12- 8		157077-001	J-19		157205-000	G-24	
	D-25		150180-000	Z-12-11		157079-001	J-61		157211-000	H-11-11	
118311-001	B-29		150181-101	Z-12- 1-2		157081-001	J-62		157216-001	J-58	
118371-001	C-29		150182-000	Z-12-12		157082-001	J-63		157218-000	H-10- 4	
118379-001	C-59		150184-001	Z-12-14-4		157083-101	J-22			Z-19	
118666-001	C-63		150189-001	Z-12- 1-1		157090-101	J-23		157219-000	H-11- 2	
118807-101	B-22		150192-003	Z-12-14		157092-001	J-24			Z-22	
118837-001	Z- 3		150202-001	Z-12- 4-2		157095-001	J-27		157220-000	H-11- 3	
121156-001	Z- 9		151012-001	A-32-8		157098-001	J-30			Z-23	
121764-001	F- 8- 1-3		151601-002	A-22		157099-000	J-67		157222-001	H-10- 1	
	F- 9- 1-3		151603-002	C-24		157107-001	J-33		157223-001	H-11- 1	
121765-001	F- 8- 1-4		151604-001	B-36		157108-001	J-34		157224-001	C-30-3-2	
	F- 9- 1-4		151604-002	B-39		157109-001	J-36			H- 4- 2	
122771-002	B-28-3			D-21		157111-001	J-57		157225-000	C-30-3-3	
122991-001	Z- 1		151605-001	B-25		157116-001	J-44			H- 4- 3	
124697-001	B-38			C-10		157117-001	J-46		157230-001	F- 9- 1-1	
126863-000	Z-12-13			C-22		157118-001	J-47		157236-001	C-45	
129984-001	B-41			C-53		157119-001	J-48		157238-001	J-74	
131007-001	C- 6-2			D-24		157120-001	C-30		157239-001	J-75	
	C- 7-2			D-28		157121-000	C-30-1		157241-001	J- 8	
	C-12			D-40		157122-000	C-34		157244-001	C-13	
	C-65		152358-001	G- 1- 4		157124-001	C-36		157253-001	A- 6	
	D-30-2		152361-001	G- 1-14		157131-001	A- 4		157255-000	A-34	
	D-31-2		152362-001	G- 1-13		157133-101	F- 1		157256-001	A-38	
	D-49-2		152363-001	G- 1-15		157134-001	G- 6- 1		157258-001	F- 8	
131007-003	D- 9-2		152389-001	G- 6- 4		157137-001	F- 1- 1		157261-001	F- 9	
	D-25-2		152423-000	J-38		157138-000	F- 4		157262-001	A-35	
140519-001	D-43		152476-000	G-25		157139-001	F- 1- 2		157263-001	A-37	
140536-001	D-15		152504-000	H-16		157141-000	F- 1- 6		157264-001	A-42	
140553-102	B-27		152645-001	G- 1- 6			F- 1-16		157266-001	G-22	
140706-001	B-21-4		152973-001	E-20		157142-001	F- 1- 4		157268-001	A-32-6	
140740-001	D-13			E-26		157143-001	F- 1-11		157269-001	H-19	
141099-001	B-34		153111-001	A-23		157144-001	F- 1-12		157269-002	H-20	
142013-001	B- 2		154004-002	Z-15		157145-000	F- 1-14		157269-003	H-21	
142443-001	Z- 4		154024-001	G- 1- 7		157146-000	F- 1-21		157270-001	H-22	
142472-001	B-35		157004-001	H-13		157147-000	F- 1-23		157271-001	H-23	
142566-001	G- 1-10		157006-000	E-17		157148-000	F- 1-24		157281-000	H-26	
142990-001	Z-12-14-3		157010-001	C-14		157149-001	F- 1-25		157282-000	G- 6-10	
143882-001	Z- 8		157011-001	C-16		157151-001	F- 1-30		157287-001	A-32	
143910-001	Z-13		157012-001	C-20		157152-001	F- 1-32		157674-000	J-80	
144105-000	A-32-7		157013-001	C-21		157155-001	F- 1-34		158597-001	G- 1-19	
144504-001	A-24		157015-001	G- 1		157158-001	F- 1-36		180973-001	D-17	
145250-001	A-32-1		157016-001	G- 1- 1		157160-001	H- 8		180974-001	C- 6	
145446-001	A-32-5		157017-001	G- 3		157161-000	F- 5		180975-001	C- 7	
	G- 3- 7		157018-001	G- 3- 1		157162-001	J- 3		181937-001	D-46-4	
145465-001	B-21-5		157019-001	H- 5- 2		157165-000	G- 9		181938-001	D-46-3	
	D-42-2		157021-001	C-43		157166-000	G-13		182392-001	D-46-2	
145486-001	C-17		157024-001	H- 1		157167-000	J- 4		183162-101	F- 1-28	
145571-101	G- 3- 2		157025-001	H- 2		157170-001	C-38		183164-001	J- 2	
146055-001	A-31		157026-001	H- 3			C-40		525664-000	J-52	
146058-001	A-26		157028-001	C-30-3		157171-001	H-11		525907-000	G-19	

